

Domain: Eukaryota
Kingdom: Animalia
Phylum: Chordata
Class: Actinopterygii
Order: Characiformes
Family: Alestidae
Genus: Hydrocynus
Hydrocynus forskahlii

Characteristics:

Hydrocynus forskahlii has stripes along its body.

The dorsal fin is strong, aiding stability, while the pectoral fins help with steering.

The anal and pelvic fins enhance swimming and agility.



Class: Actinopterygii
Order: Cypriniformes
Family: Cyprinidae
Labeobarbus bynni

Characteristics:

It is a beautiful, very strong, and fast fish.

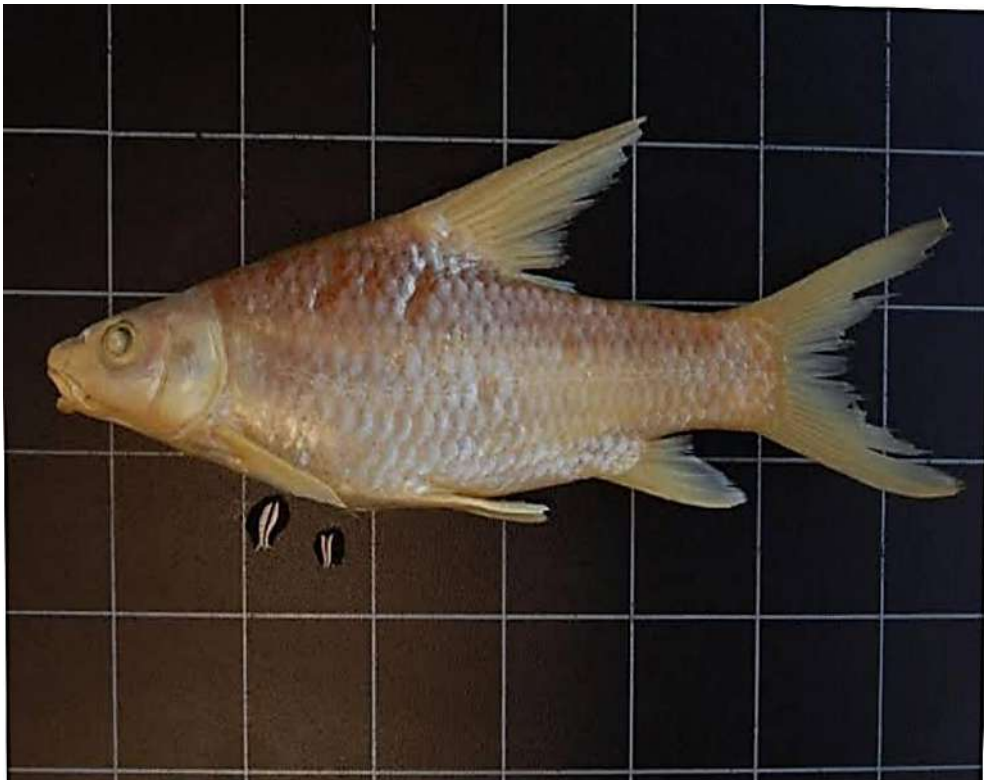
Its color is silver when it is young.

Its color turns to golden as it grows older.

It has a hard thorn in the back, and its back becomes high in large fish.

It has well-developed fins that aid in swimming and maneuverability.

The dorsal fin provides stability, while the large pectoral fins assist with steering, and the pelvic and anal fins enhance agility.



Class: Actinopterygii

Order: Siluriformes

Family: Clariidae

Clarias anguillaris

Characteristics:

Clarias anguillaris is a species of African airbreathing catfish also known as the mudfish.

Broad, terminal mouth with four pairs of barbels.

Head oval-shaped to rectangular in dorsal outline eyes rather lateral in position.

long, slender fins that aid in swimming and maneuverability.

The dorsal fin extends along much of the back, providing stability, while the pectoral fins are broad and help with steering.

The pelvic fins are small but contribute to balance, allowing the fish to navigate effectively in its aquatic environment.



Domain: Eukaryota
Kingdom: Animalia
Phylum: Chordata
Class: Actinopterygii
order: Cypriniforme
family: Cyprinidae
Subfamily: Labeoninae
Genus: Labeo
species: L. Coubie
Labeo coubie

Characteristics:

Labeo coubie, known as the Coubi Labeo. This freshwater fish has a robust body with a distinctive shape, often displaying colors like green, brown, or gray, with lighter underbellies.

It has well-developed fins that aid in swimming and maneuverability. The dorsal fin provides stability, the broad pectoral fins assist with steering, and the smaller pelvic fins help with balance.



Kingdom: Animalia
Phylum: Chordata
Class: Actinopterygii
Order: Aulopiformes
Family: Synodontidae
Subfamily: Synodontinae
Genus: Synodus.
Synodus sp.

Characteristics:

Synodontis species have a distinctive body shape with flattened heads and elongated bodies, often displaying unique patterns that vary among species.

They also have three pairs of barbels around their mouths, which help them sense their environment.

It has well-developed fins that aid in swimming, with a prominent dorsal fin for stability, large pectoral fins for maneuvering, and pelvic and anal fins that assist with balance.



Domain: Eukaryota
Kingdom: Animalia
Phylum: Chordata
Class: Chondrichthyes
Subclass: Elasmobranchii
Subdivision: Selachimorpha
Order: Lamniformes
Family: Odontaspidae
Genus: Odontaspis
Species: O. Noronhai
Odontaspis noronhai

Characteristics:

Large, elongated body.

Big eyes, Pointed snout, Two dorsal fins, with the first one smaller than the second.

Long, sharp teeth that can be seen when its mouth is open.



Kingdom: Animalia
Phylum: chordata
class Actinopterygii
order Osteoglossiformes
suborder Osteoglossoidei
Family : Mormyridae
Genus: Mormyrus
Species: Mormyrus kannume
Mormyrus kannume

Characteristics:

Elongated body.

Rounded head with a small mouth.

Long dorsal and anal fins.

Forked tail.



Domain: Eukaryota
Kingdom: Animalia
Phylum: Chordata
Class: Actinopterygii
Order: Perciformes
Family: Serranidae
Subfamily: Epinephelinae
Tribe: Epinephelini
Genus: Epinephelus
Species: E. Fasciatus
Epinephelus Fasciatus

Characteristics:

Oval-shaped body, slightly elongated.

Black tips on the dorsal and tail fins.

Large mouth.

Rounded fins.



Domain: Eukaryota
Kingdom: Animalia
Phylum: Chordata
Class: Actinopterygii
Order: Perciformes
Family: Latidae
Genus: Lates
Species: L. niloticus
Lates niloticus

Characteristics:

Large, robust body.

Big mouth with a protruding lower jaw.

Large eyes.

well-developed and include Dorsal fin divided into two parts: a spiny front and a soft back section, pectoral fins, pelvic fins, anal fin, and a rounded caudal fin, aiding in balance, stability, and propulsion in the water.



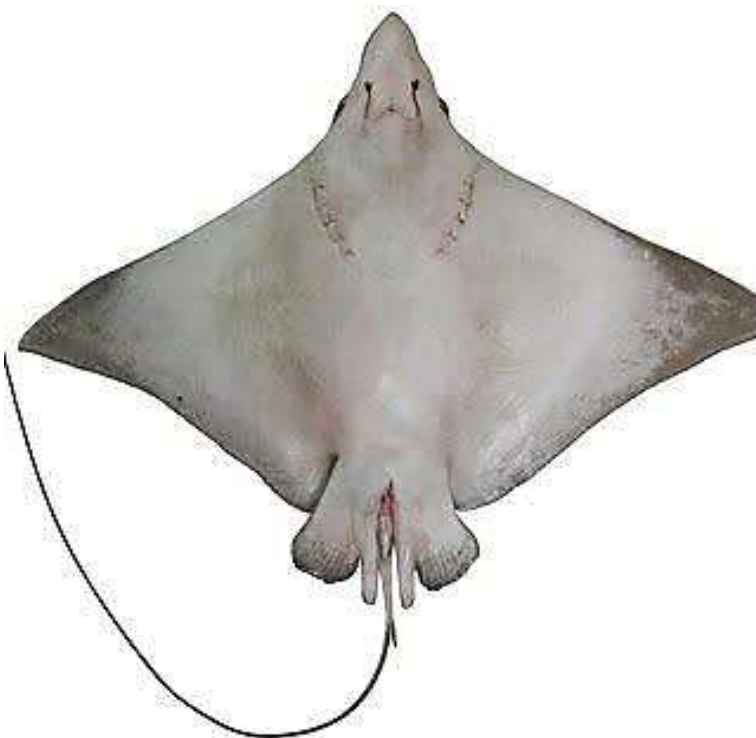
Phylum: Chordata
Subphylum: Vertebrata
Class: Elasmobranchii
Subclass: Neoselachii
Order: Myliobatiformes
Family: Aetobatidae
Genus: Aetobatus
Species: Aetobatus flagellum
Aetobatus flagellum

Characteristics:

The *Aetobatus flagellum*, or longheaded eagle ray, is characterized by its diamond-shaped body.

large triangular pectoral fins, and long tail that can be up to three times its body length.

Its dorsal side is uniformly brownish or greenish brown, while the ventral side is mostly white with some mottling.



Domain: Eukarya
Kingdom: Animalia
Phylum: Chordata
Class: Actinopterygii
Order: Perciformes
Suborder: Percoidei
family: Lutjanidae
subfamily: Lutjaninae
genus: Lutjanus
Species: Lutjanus bohar
lutjanus bohar

Characteristics:

The *Lutjanus bohar* features a moderately deep body, a groove from the nostrils to the eye, and a crescent-shaped tooth patch on the vomer.

Its dorsal fin has 10 spines and 13-14 soft rays.

while the anal fin has 3 spines and 8 soft rays.

Juveniles often mimic damselfish for protection.

This species is commercially caught but poses a risk of ciguatera poisoning in some areas.



kingdom: Animalia
phylum: Chordata
class: Actinopterygii
order: Perciformes
suborder: Labroidei
family: Cichlidae
genus: Oreochromis
species: Oreochromis niloticus
Oreochromis niloticus

Characteristics:

They have a moderately deep body and distinctive fins, contributing to their identification.

Body size and maturity vary based on environmental factors, with larger ponds resulting in larger mature individuals.



Kingdom: Animalia
Phylum: Chordata
Class: Actinopterygii
Order: Perciformes
Superfamily: Siganoidea
Family: Siganidae
Genus: Siganus
Species: Siganus rivulatus
Siganus rivulatus

Characteristics:

It has an oval, laterally compressed body with a gray green to brown back and a light brown to yellow abdomen, featuring fine yellow lines and horizontal stripes.

Dorsal Fin: A small first dorsal spine covered with skin, shorter than the snout.

Caudal Fin: A forked tail fin with small, embedded scales.



Kingdom: Animalia
Phylum: Chordata
Class: Actinopterygii
Order: Anguilliformes
Family: Muraenidae
Genus: Gymnothorax
Gymnothorax sp.

Characteristics:

Gymnothorax (moray eels) are long, slender eels with a small head and a continuous dorsal fin.

They exhibit mottled coloration for camouflage, with sharp, pointed teeth for grasping prey like fish and crustaceans.

Found in tropical and subtropical marine environments, they often inhabit reefs, crevices, and ledges.



Domain: Eukaryota
Kingdom: Animalia
Phylum: Chordata
Class: Chondrichthyes
Subclass: Elasmobranchi
Superorder: Batoidea
Order: Myliobatiformes
Family: Dasyatidae
Genus: Taeniura
Species: T. lymma
Taeniura lymma

characteristic:

The bluespotted ribbontail ray has smooth skin with small thorns on its back.

Its striking dorsal coloration features numerous circular neon blue spots on a yellowish-brown or green background, with smaller spots near the disc margin. The tail has two blue stripes along its sides, and the eyes are bright yellow with a white belly. The bluespotted ribbontail ray has a long dorsal fin that runs along its back, aiding in stability and maneuverability..



Domain: Eukaryota
Kingdom: Animalia
Phylum: Chordata
Class: Actinopterygii
Order: Pleuronectiformes
Family: Soleidae
Genus: Pardachirus
Species: P. marmoratus
Pardachirus marmoratus

characteristic:

Pardachirus marmoratus, also known as the Moses sole, is a flatfish with a distinctive body. Its left eye moves to the right side as it grows, and its color ranges from white to pale brown or grey, with dark brown spots and irregular rings on the body, head, and fins. It has no pectoral fins but has a dorsal fin on top, an anal fin underneath, a rounded caudal (tail) fin, and pelvic fins near the head.



Domain: Eukaryota
Kingdom: Animalia
Phylum: Chordata
Class: Actinopterygii
Order: Scorpaeniformes
Family: Scorpaenidae
Genus: Pterois
Species: P. volitans
Pterois volitans

characteristic:

Red lionfish are considered invasive species. They have white stripes mixed with red, maroon, or brown stripes. They have large, venomous spines on their dorsal, pelvic, and anal fins, giving them a mane-like appearance.



Domain: Eukaryota
Kingdom: Animalia
Phylum: Chordata
Class: Actinopterygii
Order: Syngnathiformes
Family: Syngnathidae
Subfamily: Syngnathinae
Genus: Doryichthys
Doryichthys bilineatus

characteristic:

Doryichthys, or river pipefish, is a genus of Asian freshwater pipefishes. They have 43 to 65 dorsal soft rays and a color pattern of alternating blue and brown bars. With 22 to 24 trunk rings and 32 to 38 tail rings, they are the largest freshwater pipefish. Found in rivers and streams, they feed on small crustaceans, worms, and insects.



Domain: Eukaryota

Kingdom: Animalia

Phylum: Chordata

Class: Actinopterygii

Order: Perciformes

Family: Scorpaenidae

Genus: Scorpaenopsis

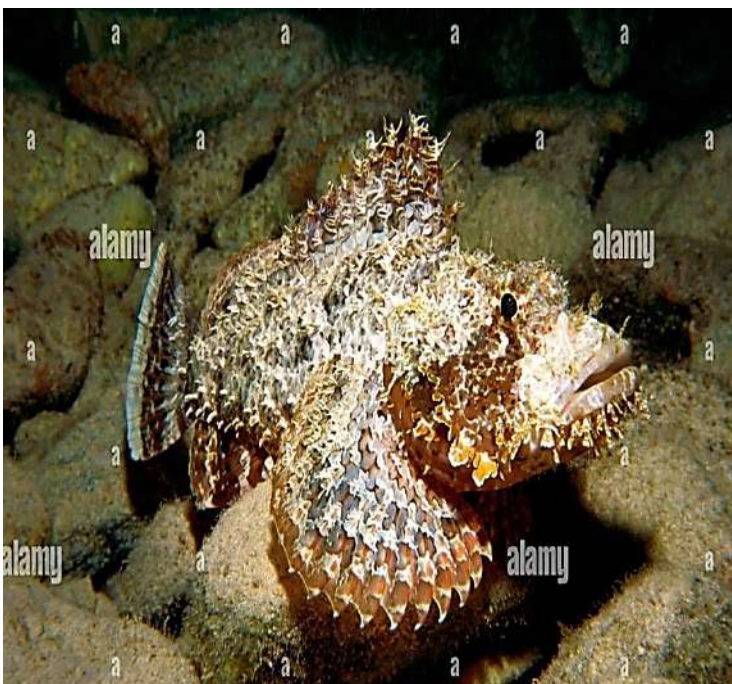
Species: S. oxycephalus

Scorpaenopsis oxycephalus

characteristic:

External Appearance:

- Compact body covered with skin flaps and projections, aiding in camouflage with the environment.
- Large, elongated head with a prominent jaw containing small teeth.
- Body coloration varies between brown, red, and orange, with irregular spots to enhance camouflage.



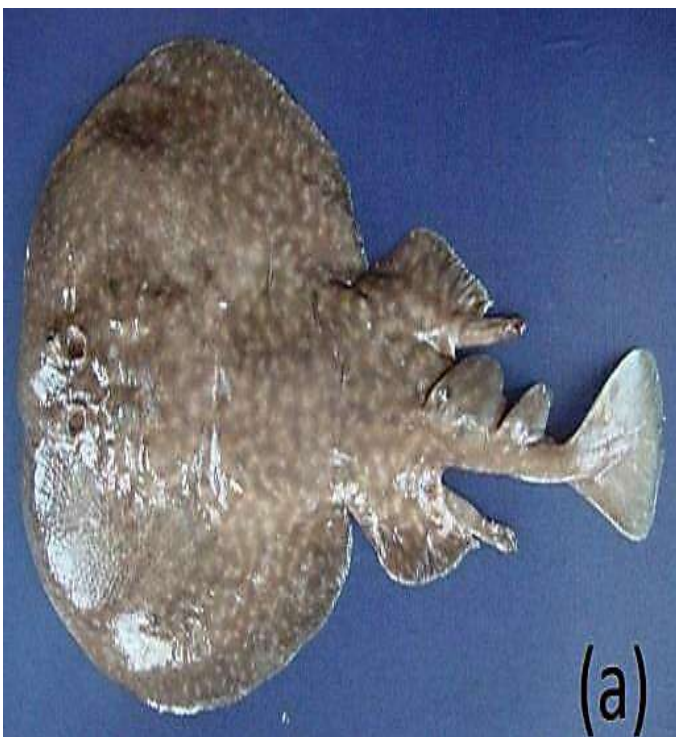
Domain: Eukaryota
Kingdom: Animalia
Phylum: Chordata
Class: Chondrichthyes
Subclass: Elasmobranchii
Superorder: Batoidea
Order: Torpediniformes
Family: Torpedinidae
Genus: Torpedo
Species: T. Panthera
Torpedo panthera

Characteristics:

Medium sized rayfish. Flat like other rays, disc-shaped, with caudal fins that

Vary in length. Disk fleshy and broadly circular.

Body color pale to reddish brown with whitish spots.



Domain: Eukaryota
Kingdom: Animalia
Phylum: Chordata
Class: Actinopterygii
Order: Siluriformes
Family: Mochokidae
Genus: Synodontis
Species: S. schall
Synodontis schall

Characteristics:

light brown in colour and is covered in numerous, irregular dark brown spots, often smaller in size on the head and ventral region.

, has a shield on its body and has strong bony spines on the pectoral and dorsal fins.



Kingdom: Animalia

Subkingdom: Bilateria

Phylum: Chordata

Subphylum: Vertebrata

Infraphylum: Gnathostomata

Superclass : Actinopterygii

Class: Teleostei

Superorder: Acanthopterygii

Order: Belontiiformes

Suborder: Belontioidae

Superfamily: Exocoetoidea

Family: Hemiramphidae

Subfamily : Hemiramphinae

Genus: Hemiramphus

Species: Hemiramphus far

Hemiramphus far

Characteristics:

Hemiramphus far, commonly known as the halfbeak, has an elongated and streamlined body that tapers towards the tail. It has an unusual look due to its characteristic extended lower jaw that extends past the top jaw. It includes a dorsal fin located far back on the body, the anal fin, pectoral fins are well-developed.



Domain: Eukaryota
Kingdom: Animalia
Phylum: Chordata
Class: Actinopterygii
Order: Labriformes
Family: Scaridae
Genus: Scarus
Scarus sp.

Characteristics:

They have large thick scales, lips largely covering dental plates.
the head is big with a roundish long snout at the apex.
scale rows on cheek, the caudal fin is deeply emarginate.



Domain: Eukaryota
Kingdom: Animalia
Phylum: Chordata
Class: Chondrichthyes
Subclass: Elasmobranchii
Subdivision: Selachimorpha
Order: Carcharhiniformes
Family: Sphyrnidae
Genus: Sphyrna
Species: *S. lewini*

Characteristics:

They have a very large first dorsal fin that is slightly hooked and a smaller second dorsal fin.[6] Scalloped hammerhead sharks are typically uniform grey, grayish brown, bronze, or olive with a white underside for countershading.



Domain: Eukaryota
Kingdom: Animalia
phylum: Chordata
class: Actinopterygii
order: Cypriniformes
family: Cyprinidae
Genus: Labeo
species: L. niloticus
Labeo niloticus

Characteristics:

Labeos have the two barbels on the rostrum which are common among the Cyprinidae, and also another pair of barbels at the rear edges of the lower maxilla, which has been lost in some of their relatives. They have a well-developed vomeropalatine organ. In the Weberian apparatus, the posterior supraneural bone is elongated and contacts the skull at the forward end.



domain: Eukaryota
Kingdom: Animalia
phylum: Chordata
class: Actinopterygii
order: Cypriniformes
family: Cyprinidae
Genus: Labeo
species: L. niloticus
Labeo niloticus

Characteristics:

Angel sharks have a broad, flattened body in the front and a muscular back, allowing them to bury in sediment to ambush prey such as fish, crustaceans, and mollusks. They feature dorsal eyes, spiracles, and five gill slits. Their large horizontal pectoral and pelvic fins aid in movement, and they possess two dorsal fins, no anal fin, and a unique caudal fin where the lower lobe is longer than the upper.



domain: Eukaryota
kingdom: Animalia
phylum: Chordata
class: Actinopterygii
order: Syngnathiformes
family: Fistulariidae
Genus: Fistularia
species: F. commersonii
Fistularia commersonii

Characteristics:

This species has a vertically flattened body with a long, tubular snout and a long whiplike tail filament. The dorsal and anal fins are orange, becoming transparent at the base, while the caudal filament is white. At night, the fish appears broadly banded, with a green dorsal coloration that transitions to silvery white ventrally and features two blue stripes or rows of blue spots on its back.



Domain: Eukaryota
Kingdom: Animalia
Phylum: Chordata
Class: Actinopterygii
Order: Scorpaeniformes
Family: Scorpaenidae
Genus: Pterois
Species: P. volitans
Pterois volitans

Characteristics:

External Appearance:

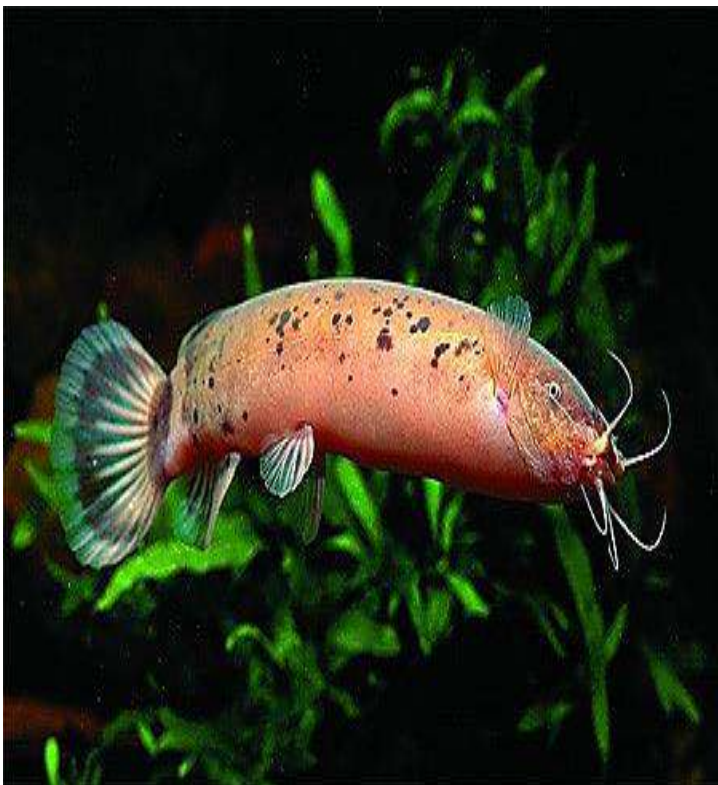
- Distinctive elongated body with bold, vertical red, white, and brown stripes.
- Large pectoral fins that fan out like wings, giving a majestic appearance.
- Long, flowing dorsal fin spines and fin rays that resemble feathery extensions.
- Prominent head with fleshy tentacles above the eyes for sensory functions.



Domain: Eukaryota
Kingdom: Animalia
Phylum: Chordata
Class: Actinopterygii
Order: Siluriformes
Family: Malapteruridae
Genus: Malapterurus
Species: M. electricus
Malapterurus electricus

Characteristics:

The electric catfish has a long, cylindrical body that is somewhat flattened. This shape helps it navigate through its freshwater habitat. Its coloration ranges from a dull olive or brown to a lighter underside, providing camouflage in its natural environment. The fish has a reduced dorsal fin and long pectoral fins, which it uses for maneuvering. The caudal fin is broad and rounded.



Domain: Eukaryota

Kingdom: Animalia

Phylum: Chordata

Class: Actinopterygii

Order: Scombriformes

Family: Scombridae

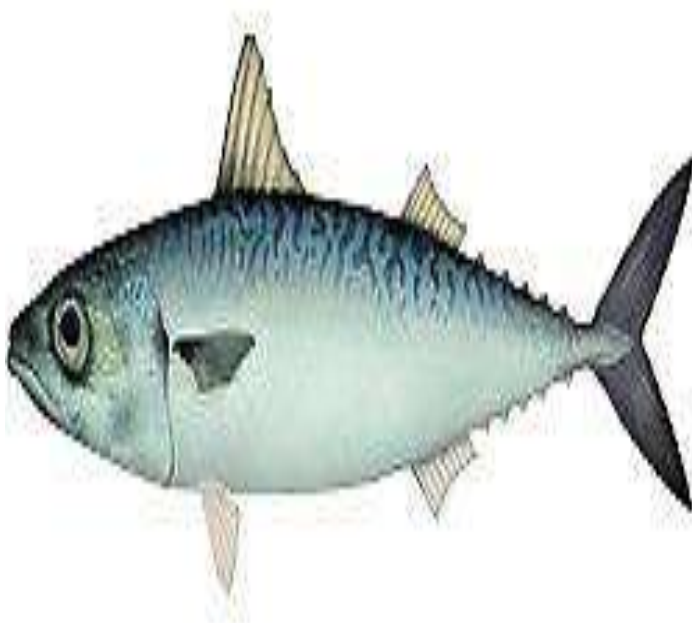
Genus: Scomber

Species: S. japonicus

Scomber japonicus

Characteristics:

The Japanese mackerel has a streamlined, elongated body that is adapted for fast swimming. It features a bluish green back with vertical dark stripes and a silver-white belly. The striking coloration helps it blend in with its ocean environment. The mackerel has a prominent dorsal fin and two dorsal fins in total. Its pectoral fins are relatively short, and the tail fin is deeply forked, enhancing its swimming efficiency.



Domain: Eukaryota
Kingdom: Animalia
Phylum: Chordata
Class: Actinopterygii
Order: Spariformes
Family: Sparidae
Genus: Rhabdosargus
Species: R. sarba
Rhabdosargus sarba

Characteristics:

The yellowfin bream has a laterally compressed, oval body that contributes to its streamlined shape. Its coloration is typically silver with a slightly darker back and a yellowish tint on the fins, particularly the dorsal and anal fins. The belly is usually white or pale. The dorsal fin is divided into two parts; the first part has spiny rays, while the second is softer and longer. The anal fin is also distinct, with a similar structure.



Domain: Eukaryota
Kingdom: Animalia
Phylum: Chordata
Class: Actinopterygii
Order: Tetraodontiformes
Family: Tetraodontidae
Genus: Tetraodon
Species: T. lineatus
Tetraodon lineatus

Characteristics:

The striped pufferfish has a rounded, robust body typical of pufferfish, which can inflate when threatened. It features a distinctive pattern of stripes, usually in shades of brown, yellow, or green. The stripes run longitudinally along the body, providing excellent camouflage among vegetation. Its fins are relatively small, with a soft, rounded appearance. The pectoral fins are located just behind the gills and are used for maneuvering.



Domain: Eukaryota
Kingdom: Animalia
Phylum: Chordata
Class: Actinopterygii
Order: Tetraodontiformes
Family: Diodontidae
Cylichthys spilostylus

Characteristics:

Cylichthys spilostylus (Spot-fin Porcupinefish) has a round body, sharp spines.

light brown color with dark spots.

large eyes, and a beak-like mouth.



Domain:Eukaryota
Kingdom:Animalia
Phylum:Chordata
Class:Actinopterygii
Order:Tetraodontiformes
Family:Molidae
Mola mola

Characteristics:

Mola mola (Ocean Sunfish) is distinguished by its round, flat body. ,no true tail.

large dorsal and anal fins, small pectoral fins.

rough skin.,

small mouth.



Domain: Eukaryota
Kingdom: Animalia
Phylum: Chordata
Class: Actinopterygii
Order: Tetraodontiformes
Family: Ostraciidae
Tetrosomus gibbosus

Characteristics:

Tetrosomus gibbosus (Humpback Boxfish) has a box-shaped body.

humped back.

small mouth.

small fins.

and pale brown color with dark spots.



kingdom: Animalia
phylum: Chordata
class : Chondrichthyes
order: Carcharhiniformes
family: Carcharhinidae
Carcharhinus wheeleri

Characteristics:

Carcharhinus wheeleri is distinguished by a rounded snout.

white tip on the first dorsal fin, large second dorsal fin, and a black band on the tail's edge.

Its body is grey above and white below.



Kingdom: Animalia
Phylum: Chordata
Class: Actinopterygii
Order: Labriformes
Family: Labridae
Genus: Cheilinus
Species: C. undulatus
Cheilinus undulatus

Characteristics:

It has a distinctive large body.

thick lips.

two black lines behind the eyes.

and a prominent hump on the forehead in adults.

Its color ranges from dull blue-green to vibrant shades of green and purplish-blue.



phylum: Chordata
class : Actinopterygii
order :Perciformes
suborder : Scombroidei
family : Sphyraenidae
genus : Sphyraena
species: Sphyraena qenie
Sphyraena qenie

Characteristics:

It has a long, streamlined body with .

It features elongated rays on the second dorsal and anal fins.
a blackish caudal fin, and a distinct longer lower jaw.

The body is slim, with the first dorsal and pelvic fins positioned toward the front.



Kingdom: Animalia
Phylum: Chordata
Class: Actinopterygii
Order: Acanthuriformes
Family: Luvaridae
Genus: Luvarus
Species: L. imperialis
Luvarus imperialis

Characteristics:

It has oval body, with a small mouth and low-set eyes beneath a bulging forehead.

It has long, soft-rayed dorsal and anal fins, a large concave caudal fin, small pelvic fins, and long, pointed pectoral fins.



Kingdom: Animalia
Phylum: Chordata
Class: Actinopterygii
Order: Anguilliformes
Family: Muraenidae
Genus: Gymnothorax
Species: G. javanicus
Gymnothorax javanicus

Characteristics :

It is a large eel . Its body is long and brown, with juveniles being tan with large black spots.

while adults develop leopard-like spots behind the head.



Domain: Eukaryota
Kingdom: Animalia
Phylum: Chordata
Class: Actinopterygii
Order: Carangiformes
Family: Echeneidae
Genus: Echeneis
Species: E. naucrates
Echeneis naucrates

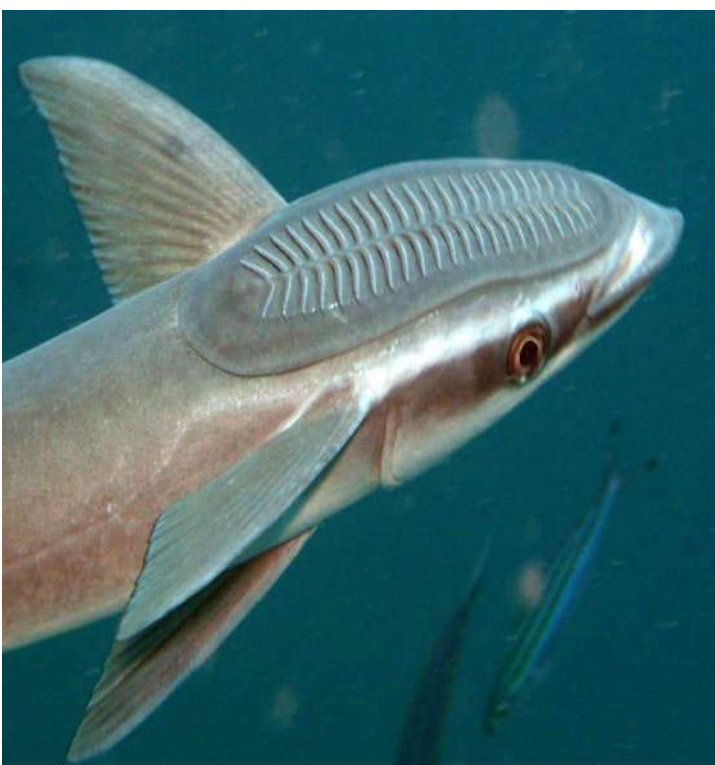
Characteristics:

oval-shaped sucking disc.

a highly modified dorsal fin positioned from the top of the head to the anterior part of the body.

The body background colouration is dark grey to dark brown, with a dark belly.

A longitudinal stripe runs along the axis side of the body,



Domain: Eukaryota
Kingdom: Animalia
Phylum: Chordata
Class: Actinopterygii
Order: Tetraodontiformes
Family: Tetraodontidae
Genus: Arothron
Species: A. hispidus
Arothron hispidus

Characteristics:

The white-spotted puffer fish (*Arothron hispidus*) is a medium to large species, growing up to 50 cm.

It has a greyish or yellowish body with white spots, dark shoulders, and white ventral side.

Concentric white and dark grey lines appear around its eyes and pectoral fins. It is poisonous.



Domain:Eukaryota

Kingdom:Animalia

Phylum:Chordata

Class:Actinopterygii

Order: Perciformes

Family: Ephippidac

Genus:Platax

Species:Sp

Platax sp.

Characteristics:

Platax is a fish with a roughly circular body, silver, grey, or brownish in color.

It has a dark blotch under the pectoral fin, a long dark mark above the anal fin, and blackish bands through the eye and pectoral fin.

The fish can change color between silvery white and brown with darker bands.



Domain:Eukaryota
Kingdom:Animalia
Phylum:Chordata
Class:Actinopterygii
Order:Perciformes
Family:Lutjanidae
Genus:Lutjanus
Species:L. bohar
Lutjanus bohar

Characteristics:

Lutjanus bohar, commonly known as the two-spot red snapper, has an elongated, robust body with a slightly forked tail.

Its coloration is typically reddish-brown with darker hues along the back, and it has two distinctive black spots on the upper sides near the dorsal fin.

The fins are well-developed, aiding in swift movement; the dorsal fin is continuous with a spiny front and soft back section, while the pectoral fins are broad and aid in maneuvering.



Domain: Eukaryota
Kingdom: Animalia
Phylum: Chordata
Class: Actinopterygii
Order: Perciformes
Family: Serranidae
Subfamily: Epinephelinae
Genus: Plectropomus
Plectropomus truncates

Characteristics:

commonly known as the coral groupers, is a genus of marine ray-finned fish.

Its mouth is modified into Superior shape thus, the lower lip is larger than the upper lips.

Has an elongated, robust body with a slightly forked tail.

Its coloration is typically reddish-brown with darker hues along the back, and it has two distinctive black spots on the upper sides near the dorsal fin.

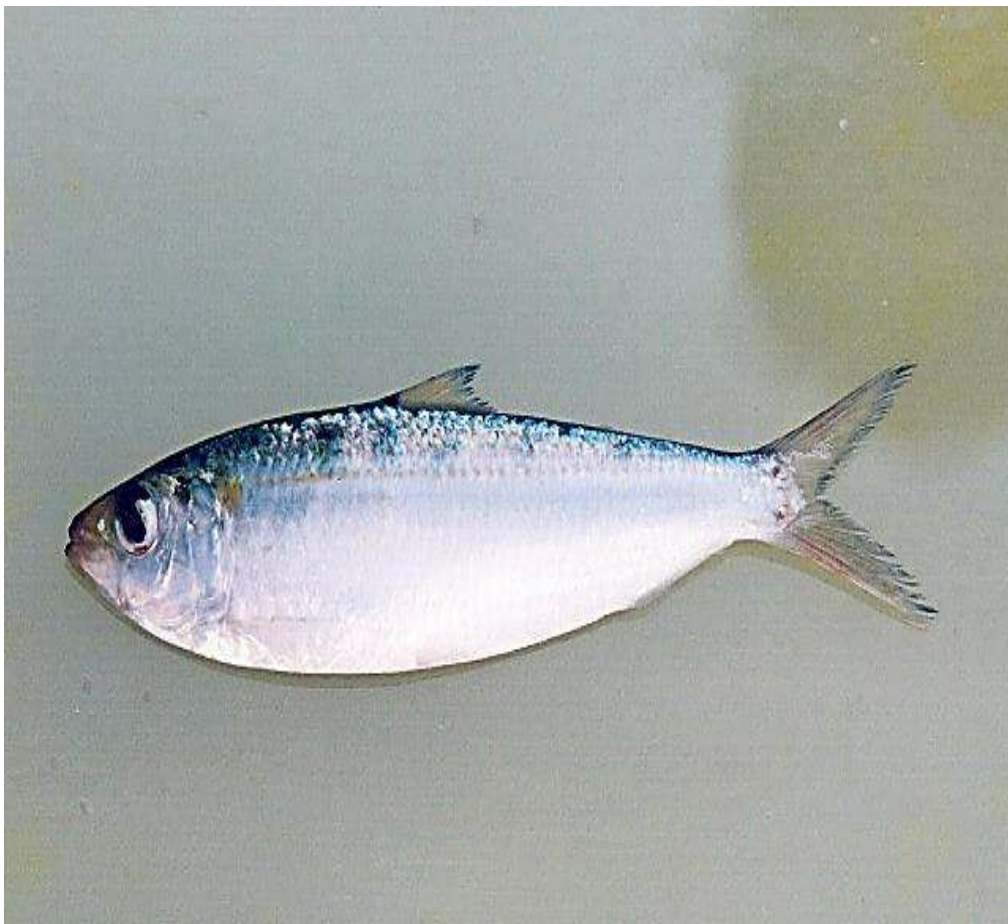


Domain:Eukaryota
Kingdom:Animalia
Phylum:Chordata
Class:Actinopterygii
Order:Clupeiformes
Suborder:Clupeoidei
Family:Dorosomatidae
Genus:Sardinella

Characteristics:

These species are distinguished by their ranges and by specific body features, but they are often confused with one another.

Fish of the genus have seven to 14 striped markings along the scales of the top of the head.



Domain:Eukaryota

Kingdom:Animalia

Phylum:Chordata

Class:Chondrichthyes

Subclass:Elasmobranchii

Subdivision:Selachimorpha

Order:Carcharhiniformes

Family:Galeocerdonidae

Genus:Galeocerdo

Species:G. cuvier

Galeocerdo cuvier

Characteristics:

Has five gill slits, is a large species of shark .

It has a robust, streamlined body with a broad, flat head and a pointed snout, serrated teeth that are ideal for its carnivorous diet.

Its color includes a grayish or bluish top with a lighter underside.



Domain: Eukaryota
Kingdom: Animalia
Phylum: Chordata
Class: Actinopterygii
Order: Perciformes
Family: Haemulidae
Subfamily: Plectorhinchinae
Genus: Plectorhinchus
Plectorhinchus sp.

Characteristics:

These fish have big, fleshy lips and elongated body.

Color: white with brown

Fins: The dorsal fin is long and continuous, while the anal fin is shorter and more rounded.



Domain: Eukaryota

Kingdom: Animalia

Phylum: Chordata

Class: Chondrichthyes

Subclass: Elasmobranchii

Subdivision: Selachimorpha

Order: Carcharhiniformes

Family: Carcharhinidae

Genus: Carcharhinus

Species: C. melanopterus

Carcharhinus melanopterus

Characteristics:

Body Shape: Streamlined and elongated body.

Coloration: Grayish-brown on the back with a lighter underside

Fins: Distinctive black tips on the dorsal fins and the tail fin.

Snout: Short and pointed snout.



Domain: Eukaryota
Kingdom: Animalia
Phylum: Chordata
Class: Chondrichthyes
Subclass: Elasmobranchii
Subdivision: Selachimorpha
Order: Carcharhiniformes
Family: Carcharhinidae
Genus: Triaenodon
Species: T. obesus
Triaenodon obesus

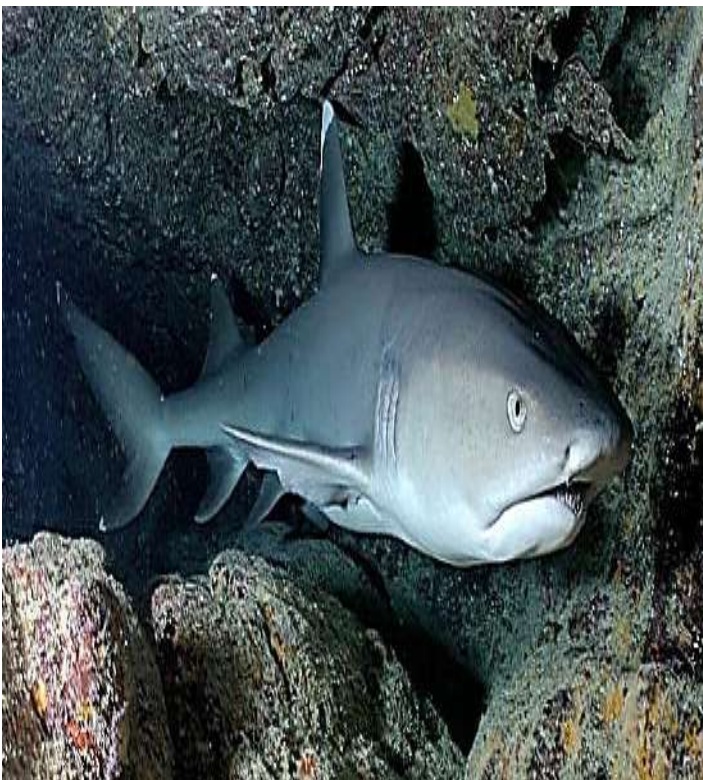
Characteristics:

Body Shape: Robust and stocky body.

Coloration: Generally gray or brown with a lighter underside.

Fins: Notable for its large, rounded dorsal fin and pectoral fins.

Snout: Short, rounded snout.



Domain: Eukaryota

Kingdom: Animalia

Phylum: Chordata

Class: Actinopterygii

Order: Labriformes

Family: Scaridae

Genus: Bolbometopon

Boleophthalmus muricatus

Characteristics:

commonly known as the mudskipper, has an elongated, robust body with a broad, flattened head and prominent, bulging eyes.

Its pectoral fins are adapted to help it move on land, giving it a unique ability to "walk" on mud and sand.

The dorsal fin is continuous and positioned towards the back, aiding in its movement on both land and in shallow waters.



Domain: Eukaryota
Kingdom: Animalia
Phylum: Chordata
Class: Actinopterygii
Order: Tetraodontiformes
Family: Balistidae
Genus: Pseudobalistes
Species: P. fuscus
Pseudobalistes fuscus

Characteristics:

Pseudobalistes fuscus has a robust, elongated body typical of pufferfish, with a rounded profile.

The fish has small dorsal and anal fins and long pectoral fins that help it maneuver through its habitat.

It features a distinctive, protruding mouth equipped with strong beak-like teeth.



Domain: Eukaryota
Kingdom: Animalia
Phylum: Chordata
Class: Actinopterygii
Order: Carangiformes
Family: Rachycentridae
Genus: Rachycentron
Species: R. canadum
Rachycentron canadum

Characteristics:

The body of the fish is smooth with small scales

The large pectoral fins are normally carried horizontally,

The first dorsal fin has six to nine independent, short, stout, sharp spines.



Domain: Eukaryota
Kingdom: Animalia
Phylum: Chordata
Class: Actinopterygii
Order: Tetraodontiformes
Family: Balistidae
Genus: Balistoides
Balistoides viridescens

Characteristics:

The Titan Triggerfish has a robust, laterally compressed body, typical of triggerfish, with a pronounced, rounded snout.

It has large dorsal and anal fins, with the dorsal fin being particularly prominent. The first spine of the dorsal fin can be raised, functioning as a "trigger" for its name.

The fish has strong, fused teeth that resemble a beak, allowing it to crush hard-shelled prey.



Domain: Eukaryota
Kingdom: Animalia
Phylum: Chordata
Class: Actinopterygii
Order: Anguilliformes
Family: Muraenidae
Genus: Gymnothorax
gymnothorax

Characteristics:

Body Shape is Elongated and streamlined, aiding in swimming efficiency.

Typically features bright colors with prominent yellow margins.

Dorsal Fin often long with noticeable spines.

Caudal Fin can be either forked or rounded, depending on the species.



Kingdom: Animalia

Phylum: Chordata

Class: Actinopterygii

Order: Notopteriformes Family: Notopteridae

Genus: Corypnoene

Species: hipyurus

Corypnoene hipyurus

Characteristics:

Body Shape is elongated and laterally compressed

Two dorsal fins, with the first being spiny and the second soft-rayed. Pectoral fins Well-developed and used for maneuvering

Eyes is Positioned on the top of the head, providing a wide field of vision

Mouth: Small, typically superior, adapted for feeding on small invertebrates.



Kingdom: Animalia
Phylum: Chordata
Class: Actinopterygii
Order: Scombriformes
Family: Scombridae
Genus: Euthynnus
Species: Alletteratus.
Euthynnus alletteratus.

Characteristics:

Its body is long, compressed shape makes it distinctive.

The upper body is dark blue, while the sides are silver, providing a clear contrast.

Lateral Stripes is prominent horizontal stripes along the sides are easily noticeable.

Has Large dorsal fins and long pectoral fins stand out when observed.



Kingdom: Animalia

Phylum: Chordata

Class: Actinopterygii

Order: Scombriformes

Family: Scombridae

Genus: Euthynnus

Species: mediterraneus

Euthynnus mediterraneus

Characteristics:

The body is Typically elongated or laterally compressed

Well-developed dorsal fins that may vary in shape and size.

Relatively large eyes that enhance vision

The mouth is usually terminal

Covered with small, overlapping scales that reduce drag and protect the body

Pectoral and Pelvic Fins is Positioned to assist in maneuverability and stability during swimming.





Class: Reptilia



Kingdom: Animalia

Phylum: Chordata

Class: Reptilia

Order: Squamata

Family: Elapidae

Genus: Naja

Species: Haje

Naja haje

Characteristics:

It has a long, slender, and elongated body

The head is relatively broad and flat, with large eyes that have round pupils, providing good vision

The skin is covered with smooth, shiny scales

It possesses long, hollow fangs that are used to deliver venom.



Kingdom: Animalia

Phylum: Chordata

Class: Reptilia

Order: Squamata

Family: Elapidae

Genus: Naja

Naja

Characteristics:

It has a long and slender body

The head is relatively broad and distinct from the neck, with large eyes that have round pupils, providing good vision

The skin is covered with smooth scales,

It has long, hollow fangs that are used to deliver venom effectively.



Kingdom: Animalia

Phylum: Chordata

Class: Reptilia

Order: Squamata

Family: Chamaeleonidae

Genus: Chamaeleo

Species: Chamaeleo

Chamaeleo chamaeleo

Characteristics:

Large, Bulging body

Their eyes are very large and prominent, giving them a unique appearance; the independent movement of each eye enhances their ability to scan their surroundings.

The tail is long and can grasp branches, providing extra support when climbing

Their feet are adapted for climbing, with two toes pointing forward and two pointing backward, which helps them grip onto branches securely.



Kingdom: Animalia

Phylum: Chordata

Class: Reptilia

Order: Squamata

Family: Typhlopidae

Genus: Leptotyphlop

Leptotyphlops cairi

Characteristics:

The body is slender and flexible, aiding movement through soil.

The tail is pointed, facilitating burrowing.

The small mouth is equipped with fine teeth for grasping prey.

The nostrils are small, which helps with breathing while underground.

The skin is moist and smooth, reducing friction during digging.

These traits reflect its adaptation to a subterranean lifestyle.



Kingdom: Animalia

Phylum: Chordata

Class: Reptilia

Order: Squamata

Family: Viperidae

Genus: Echis

Species: coloratus

Echis coloratus

Characteristics:

It has a robust and stout body, which is characteristic of many vipers. The head is triangular and distinctly wider than the neck, with a prominent, flat appearance.

The body exhibits a pattern of light and dark bands or blotches, often in shades of brown, gray, or tan, providing effective camouflage.

The eyes are relatively large with vertical slit pupils, typical of ambush predators. The skin is covered in keeled scales, giving it a rough texture



Kingdom: Animalia

Phylum: Chordata

Class: Reptilia

Order: Squamata

Family: Varanidae

Genus: Varanus

Species: Varanus griseus

Varanus griseus

Characteristics:

commonly known as the grey monitor lizard.

It has a long, slender body with a robust build.

The tail is long and powerful, often used for balance and communication.

The skin is typically grayish-brown with lighter spots or bands, providing camouflage.

The head is broad with a flat snout and small, sharp teeth.

The skin is covered in rough, keeled scales, aiding in protection.



Kingdom: Animalia
Phylum: Chordata
Class: Reptilia
Order: Squamata
Family: Viperidae
Subfamilies : Viperinae

حية قزما

Characteristics:

Very small, usually a few inches long.

Can change color for camouflage.

Broad and flat head with large eye can move independently

Short limbs with grip-friendly toes.

Prehensile tail for climbing.

Smooth or slightly rough scales.

These features help it adapt to its environment.



Kingdom: Animalia
Phylum: Chordata
Class: Reptilia
Order: Squamata
Family: Colubridae
Genus: Eirenis
Species: Eirenis coronella
Eirenis coronella.

Characteristics:

Has Slender and elongated body, adapted for burrowing.

Generally light brown or gray with darker stripes or patterns.

Small, slightly head wider than the neck, with a pointed snout.

Small and not very prominent eye , often hard to see.

Smooth, shiny scales that aid in movement through soil.

Short, tapering tail.



Kingdom: Animalia
Phylum: Chordata
subphylum: Vertebrata
class: Reptilia
Order: Squamata
Family: Agamidae
Genus: Trapelus
Species: Trapelus pallidus
Trapelus pallidus

Characteristics:

It has a light brown or pale coloration.

The body is elongated and somewhat flattened.

The head is relatively broad with a slightly pointed snout. The eyes are large, providing good vision.

The tail is long and may be slightly flattened.

The skin is covered with small, granular scales.



Domain: Eukaryota

Kingdom: Animalia

Phylum: Chordata

Class: Reptilia

Order: Squamata

Suborder: Iguania

Family: Agamidae

Genus: Trapelus

Species: flavimaculatus

Trapelus flavimaculatus

Characteristics:

commonly known as the yellow-spotted lizard

It has a sandy or light brown base color with distinctive yellow spots. The body is elongated and somewhat flattened

The head is broad with a slightly pointed snout and prominent eyes that provide excellent vision.

The tail is long and may be slightly flattened.

The skin is covered in small, smooth scales.



Domain: Eukaryota

Kingdom: Animalia

Phylum: Chordata

Class: Reptilia

Order: Squamata

Suborder: Iguania

Family: Agamidae

Genus: Laudakia

Species: L. stellio

Laudakia stellio

Characteristics:

The lizard exhibits a range of colors from gray to brown, often with darker spots. It has a robust, flattened body.

The head is broad and somewhat triangular, with a prominent snout. The eyes are large and provide excellent vision.

The skin is covered in small, spiny scales, particularly along the back and tail, giving it a rough texture. The tail is long and can be quite spiny.



Uromastyx aegyptia

Characteristics:

commonly known as the Egyptian Spiny-tailed Lizard exhibits a range of colors, including shades of brown, yellow, and gray, often with lighter or darker bands or spots.

Has a robust and stocky body.

broad, flattened head with a blunt snout and large eyes.

The skin is covered in spiny, keeled scales, particularly on the back and tail, giving it a rough texture.

Possesses strong limbs with five toes on each foot.

The tail is thick and spiny.



Domain:Eukaryota
Kingdom:Animalia
Phylum:Chordata
Class:Reptilia
Order:Squamata
Suborder:Serpentes
Family:Colubridae
Genus:Spalerosophis
Species:S. diadema
Spalerosophis diadema

characteristics:

It is a relatively long snake

It has dark brown or black spots along its body

The head is noticeably distinct from the body and resembles a small triangle. It has relatively large eyes.

The tail is narrow and tapered, helping with balance as it moves through rocky and sandy terrains.



Domain:Eukaryota
Kingdom:Animalia
Phylum:Chordata
Class:Reptilia
Order:Squamata
Suborder:Serpentes
Family:Colubridae
Genus:Lytorhynchus
Species:L. diadema
Lytorhynchus diadema

characteristics:

Slender and slightly flattened, allowing it to move easily through sand. A light sandy or beige base color

Small head marked by a dark band resembling a diadem or crown (hence its name), extending from behind the eyes across the top of the head. Prominent eyes with horizontal pupils, giving it good vision in low light conditions.



Domain:Eukaryota
Kingdom:Animalia
Phylum:Chordata
Class:Reptilia
Order:Squamata
Suborder:Serpentes
Family:Viperidae
Genus:Cerastes
Species:C. cerastes
Cerastes cerastes

Characteristics:

Sandy or pale yellow color to blend with desert environments, with darker patches or crossbands.

Broad, triangular head distinct from the neck.

Small, horn-like projections above each eye (although some individuals may lack them). Stocky with a thick body covered in rough, keeled scales. The tail is Short and tapers towards the end.

Scales is Rough-textured and keeled, helping it move across sandy terrain.



Domain:Eukaryota

Kingdom:Animalia

Phylum:Chordata

Class:Reptilia

Order:Squamata

Suborder:Serpentes

Family:Psammophiidae

Genus:Psammophis

Psammophis mossambicus

Characteristics:

Medium-sized, Brownish or olive with lighter underbelly; has darker stripes or patterns along the body, aiding in camouflage.

Slim, elongated head that blends seamlessly with the body.

Large with round pupils, adapted for excellent vision.

Slender, elongated body, streamlined Smooth and glossy scales, aiding in swift movement.

Long and tapers gradually.



Domain:Eukaryota
Kingdom:Animalia
Phylum:Chordata
Class:Reptilia
Order:Squamata
Suborder:Serpentes
Family:Viperidae
Genus:Cerastes
Species:C. vipera
Cerastes vipera

Characteristics:

Small-sized, Sandy or light brown, often with a series of darker spots or blotches along the back.

Broad, slightly flattened, with a triangular shape distinct from the neck.: Small horn-like scales above each eye, though some individuals may lack them. Positioned on the sides of the head with vertical slit pupils, adapted to low-light hunting.

Short, The tail is Short and tapers quickly.



Kingdom:Animalia
Phylum: Chordata
Class:Reptilia
Order:Squamata
Family: Lacertidae
Genus: Latastia
Species: L. longicaudata
Lantastia longicaudata

Characteristics:

Body: elongated, covered in smooth scales.

Tail: Extremely long, much longer than the body.

Head: Small with a pointed snout.

Limbs: Short legs with small toes for fast movement.

Eyes: Small and round.



Kingdom:Animalia
Phylum:Chordata
Class: Reptilia
Order: Squamata
Family: Gekkonidae
Genus: Hemidactylus
Species: H. turcicus
Hemidactyls turcicus

Characteristics:

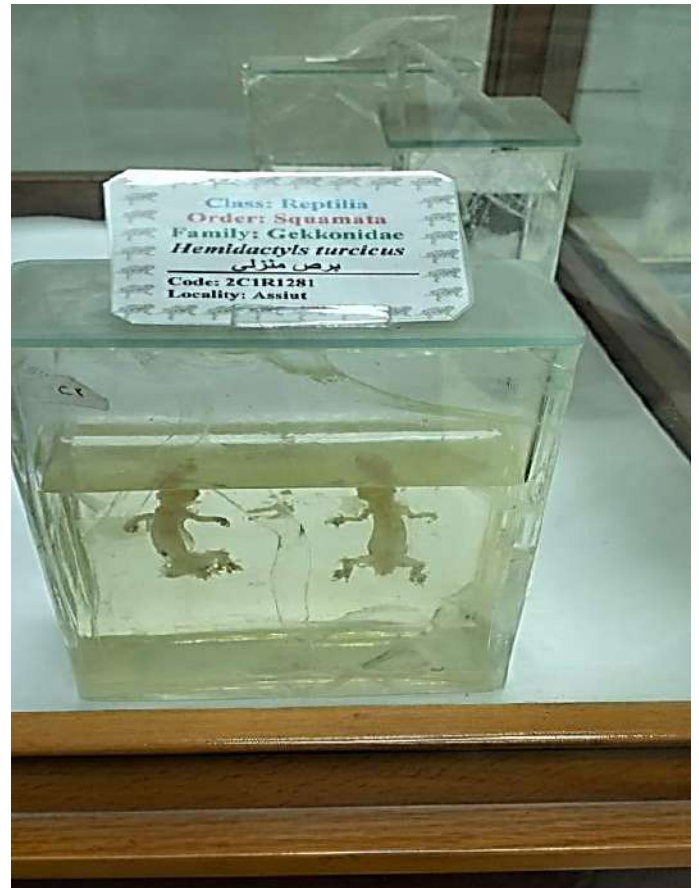
Body: Small and flattened, covered with scales.

Tail: Short

Limbs: Well-developed with sticky toe pads for climbing.

Eyes: Large

Skin: Translucent, often showing internal organs faintly.



Kingdom:Animalia

Phylum:Chordata

Class:Reptilia

Order:Squamata

Family:Lacertidae

Genus:Acanthodactylus

Species:A. scutellatus

Acanthodactylus scutellatus

Characteristics:

Body: Slender and elongated, covered with scales.

Tail: Long and tapering, often longer than the body.

Limbs: Strong legs with sharp claws for digging and running.

Head: large and Pointed with snout

Toes: Long and slender.



Domain: Eukaryota

Kingdom: Animalia

Phylum: Chordata

Class: Reptilia

Order: Squamata

Family: Scincidae

Genus: Scincus

Species: S. scincus

Scincus scincus

Characteristics:

- Commonly known as the sandfish.
- Possesses a smooth, streamlined body adapted for "swimming" through sand.
- Features short limbs, a wedge-shaped snout, and shiny, overlapping scales that reduce friction while moving in the sand.



Domain: Eukaryota

Kingdom: Animalia

Phylum: Chordata

Class: Reptilia

Order: Testudines

Suborder: Cryptodira

Superfamily: Testudinoidea

Family: Testudinidae

Genus: Testudo

Species: T. kleinmanni

Testudo kleinmanni

Characteristics:

- commonly known as the Egyptian Tortoise, is one of the smallest land tortoises in the world.. **Head:** Small, covered in yellowish scales.
- **Limbs:** Short and strong, with scaly coverings to protect against hot sand. **Tail:** Short and tapered.
- **Its shell** is a light yellow or golden-brown color, helping it blend with desert sands to evade predators.



Kingdom:Animalia

Phylum:Chordata

Class:Reptilia

Order:Crocodylia

Family:Crocodylidae

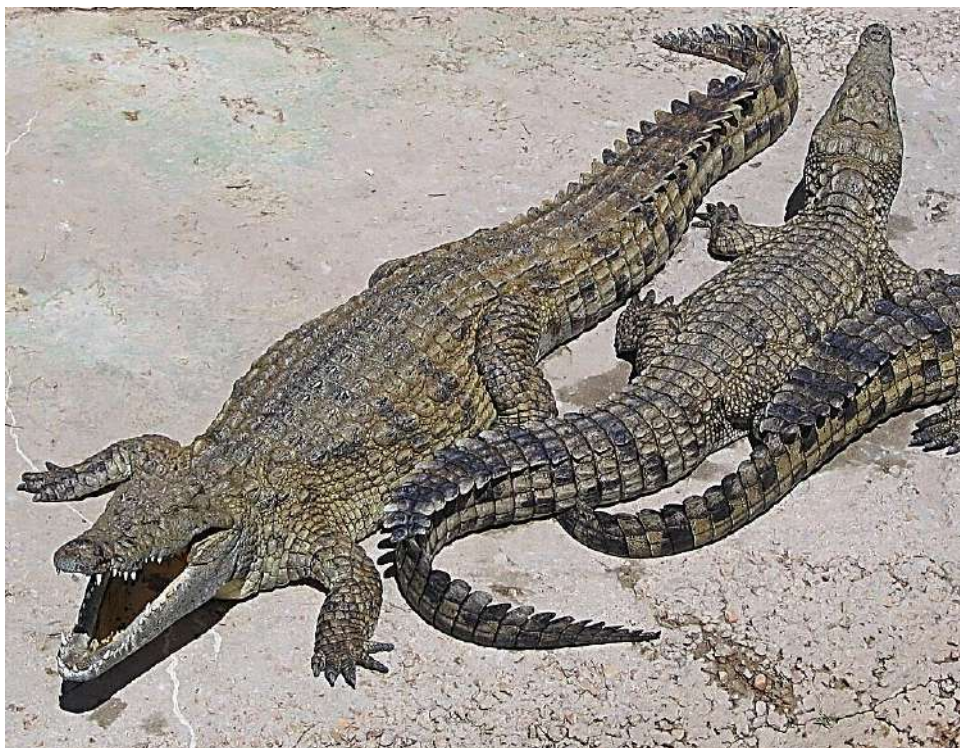
Genus:Crocodylus

Species:C. niloticus

Crocodylus niloticus

Characteristics:

- The Nile Crocodile (*Crocodylus niloticus*) is one of the largest and most well-known crocodilian species.
- **Head:** Large and triangular with powerful jaws and sharp teeth.
- **Body:** Long, muscular body with tough, scaly skin.
- **Tail:** Long and thick, used for propulsion in water.
- **Limbs:** Short, but strong and muscular for land movement and swimming.
- The body is typically olive brown to gray with a light underside, often covered with dark spots or patterns, which help with camouflage in water.



Domain: Eukaryota

Kingdom:Animalia

Phylum:Chordata

Class:Reptilia

Order:Testudines

Family:Cheloniidae

Genus:Caretta

Species:C. caretta

Caretta caretta

Characteristics:

- The Loggerhead Sea Turtle
- **Head:** They have a characteristic large, triangular-shaped head, which houses powerful jaws that allow them to crush hard-shelled prey like crabs, mollusks, and conchs.
- **Shell (Carapace):** Reddish-brown to yellowish with a rough texture. **Plastron:** Light yellow or cream.
- **Limbs:** Strong flippers adapted for swimming. **Tail:** Short and pointed.



Domain: Eukaryota
Kingdom: Animalia
Phylum: Chordata
Class: Reptilia
Order: Squamata
Family: Agamidae
Genus: Uromastyx
Species: U. ocellata
Uromastyx ocellata.

Characteristics:

commonly known as the ocellated uromastyx or ocellated spiny-tailed lizard.

Has a stout, robust body with a broad head and a short, thick tail covered in spiny scales.

The body is typically marked with striking ocelli (eye-like spots) in shades of yellow, green, or blue against a brown or gray background, providing camouflage in rocky or sandy environments.



Domain:Eukaryota

Kingdom:Animalia

Phylum:Chordata

Class:Reptilia

Order:Squamata

Family:Agamidae

Genus:Laudakia

Species:L. stellio

Laudakia stellio

Characteristics:

commonly known as the stellion or starred agama.

Has a rugged, flattened body with rough, spiny scales that provide excellent camouflage in rocky habitats.

Its coloration typically includes shades of gray, brown, or yellow, often with star-like patterns or darker spots along the body.

The tail is long and robust, also covered with spiny scales, and can be used for balance and defense.



Kingdom:Animalia
Phylum:Chordata
Class:Reptilia
Order:Squamata
Family:Scincidae
Genus:Chalcides
Species:C. sepsoides
Chalcides sepsoides

Characteristics:

Body: Long, cylindrical, and smooth, resembling a snake.

Limbs: Small, reduced legs with tiny toes.

Tail: Long and tapering

Head: Small and pointed, with a smooth surface.



Kingdom: Animalia

Phylum: Chordata

Class: Reptilia

Order Testudines

Family: Emydidae

Genus: Trachemys

Species: Trachemys scripta

Trachemys scripta elegans.

Characteristics:

Smooth, oval-shaped, dark green to brown with yellow stripes.

Large head with a pointed snout and red or orange markings behind the eyes.

Webbed feet for swimming, with sharp claws for climbing.

Light-colored lower shell, usually yellowish with dark spots

Long and strong tail , helps with swimming.



Domain: Eukaryota
Kingdom: Animalia
Phylum: Chordata
Subphylum: Cephalochordata
Class: Leptocardii
Family: Branchiostomatidae
Branchiostoma lanceolatum

Characteristics:

Small, fish-like body

Transparent body with no distinct head.

Pointed at both ends (lance-shaped).

No eyes or visible fins.

Segmented muscles along the body.



Domain:Eukaryota

Kingdom:Animalia

Phylum:Chordata

Class:Amphibia

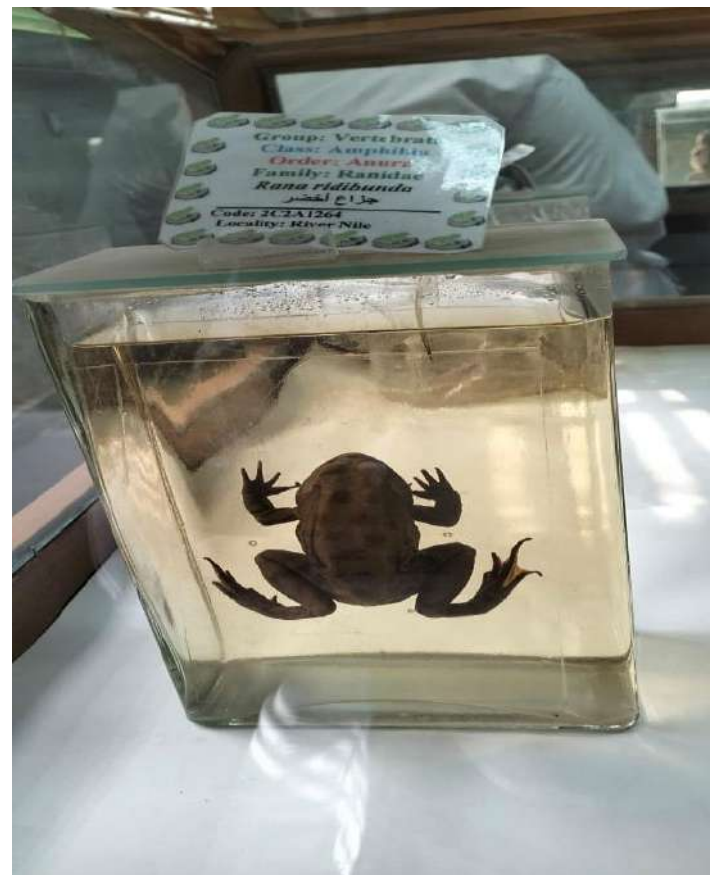
Order:Anura

Family:Ranidae

Pelophylax ridibundus

Characteristics:

The *Pelophylax ridibundus* has a green or brown back with dark spots, long hind legs, smooth skin, and prominent eyes with a dark stripe from eye to forelimb.



Domain:Eukaryota

Kingdom:Animalia

Phylum:Chordata

Class:Amphibia

Order:Anura

Family:Ranidae

Rana sp.

Characteristics:

Rana sp. frogs have green or brown skin with dark spots.

smooth moist skin, long hind legs, bulging eyes, and webbed feet.



Domain:Eukaryota

Kingdom:Animalia

Phylum:Chordata

Class:Amphibia

Order:Anura

Family:Bufonidae

Bufo viridis

Characteristics:

Warty skin with a rough texture.

Compact body with short legs.

Horizontal pupils in the eyes.



Domain:Eukaryota

Kingdom:Animalia

Phylum:Chordata

Class:Amphibia

Order:Anura

Family:Bufonidae

Genus:Bufo

Species: regularis

Bufo regularis

Characteristics:

Bufo regularis, commonly known as the African common toad.

Has a robust, stocky body covered in warty skin, which helps it blend into its surroundings.

Its coloration ranges from brown to grayish-green with darker spots, providing camouflage.

The parotoid glands behind its eyes secrete a mild toxin as a defense against predators.



Kingdom:Animalia

Phylum:Chordata

Class:Amphibia

Order:Frogs (Anura)

Family:Grass Frogs (Ptychadenidae)

Genus:Grass Frog (Ptychadena)

Species: mascareniensis

Ptychadena mascareniensis

Characteristics:

commonly known as the Mascarene grass frog.

has a slender, streamlined body adapted for jumping and movement in grassy and wetland areas.

It typically has a greenish-brown coloration with darker spots or stripes along its back, aiding in camouflage.

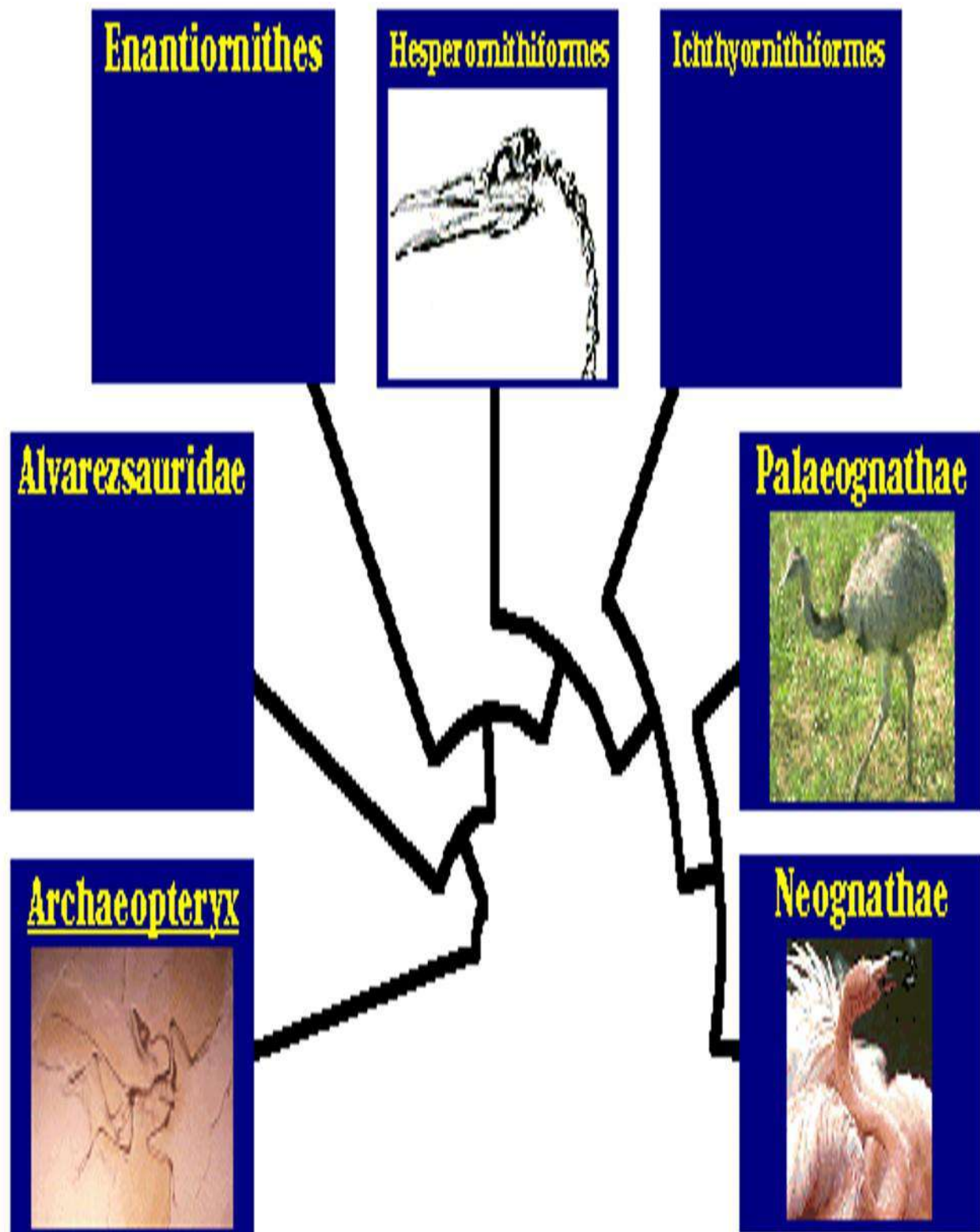




CLASS: AVES



Taxonomy of Aves



Domain:Eukaryota
Kingdom:Animalia
Phylum:Chordata
Class:Aves
Order:Falconiformes
Family:Falconidae
Falco tinnunculus

Characteristics:

Size and Shape: A small to medium-sized falcon with a slender body and pointed wings.

Color: Males have a reddish-brown back with black spots, a bluish-grey head, and a black tail band. Females are brown with more streaks.

Flight: Often seen hovering in the air with a steady head, searching for prey.

Tail: Long and fan-shaped, with a noticeable dark band at the tip.



Domain:Eukaryota
Kingdom:Animalia
Phylum:Chordata
Class:Aves
Order:Accipitriformes
Family:Accipitridae
Buteo rufinus

Characteristics:

A large buzzard with broad wings and a long tail.

Variable in color, but generally reddish-brown or light brown. Underparts are pale with darker streaks.

The legs Long, bare, and often appear pale, giving it its name.

Soars with broad wings held in a "V" shape, often seen gliding or circling.

The tail is slightly rounded, often pale with a dark tip.



Domain:Eukaryota
Kingdom:Animalia
Phylum:Chordata
Class:Aves
Order:Accipitriformes
Family:Accipitridae

aquila chrysaetos homeyeri

Characteristics :

Large eagle with broad wings and a long tail. It has a powerful, robust body.

Dark brown overall with a lighter, golden-brown head and neck. Juveniles have white patches on the wings and a white tail with a dark band.

The beak: Large, hooked, and dark, well-suited for tearing prey. Soars with wings held in a slight "V" shape, using thermal currents. It often glides effortlessly.



Domain:Eukaryota

Kingdom:Animalia

Phylum:Chordata

Class:Aves

Order:Accipitriformes

Family:Accipitridae

Pernis apivorus

Characteristics:

A medium-sized raptor with a long, slightly rounded tail and broad wings.

Color: It has a pale head with a dark crown and a pale underside. The body is a mix of brown and white, with some darker streaks on the chest and belly.

The head is slightly smaller in proportion to the body, and the beak is short and hooked.

Flies with long, broad wings and often glides in a shallow, steady motion.



Domain:Eukaryota

Kingdom:Animalia

Phylum:Chordata

Class:Aves

Order:Accipitriformes

Family:Accipitridae

Circus macrourus

Characteristics:

The pallid harrier (*Circus macrourus*) is a medium-sized bird of prey with a slim body, long wings, and a long tail.

Males are light gray with black wingtips, while females and juveniles are brown with streaks.

It has a slightly rounded face and flies with wings held in a V-shape.



Domain: Eukaryota

Kingdom: Animalia

Phylum: Chordata

Class: Aves

Order: Galliformes

Family: Phasianidae

Genus: Coturnix

Species: C. coturnix

Coturnix coturnix

Characteristics:

- The Common Quail (*Coturnix coturnix*) is a small, migratory bird.
- Quails have relatively short wings and are not strong fliers. They prefer running and hiding in dense vegetation rather than long flights. **Color:** Brownish with speckles on the back, pale underparts. **Beak:** Short, conical. **Tail:** Short, slightly squared.



Domain:Eukaryota
Kingdom:Animalia
Phylum:Chordata
Class:Aves
Order:Galliformes
Family:Phasianidae
Meleagris gallopavo

Characteristics:

Feathers is dark, iridescent with green, bronze, and copper hues.
Head/Neck is Bare, with blue and red skin, more vivid in males.

Wattles/Snood is Red fleshy parts under the beak, more prominent in males.

Tail Fan is Broad, with dark-tipped feathers displayed during courtship.

Leg Spurs is Present in adult males for defense.



Domain:Eukaryota

Kingdom:Animalia

Phylum:Chordata

Class:Aves

Order:Struthioniformes

Family:Struthionidae

Struthio camelus

Characteristics:

Males have black feathers with white wings and tail, while females have brown and gray feathers.

The largest living bird, standing 8–9 feet tall.

Head and Neck is Bare, with skin that is pinkish or blue, especially in males.

The beak is Flat and wide, adapted for grazing.

The legs is long, strong, and adapted for running, with two large toes on each foot.

The eyes is Large, with long lashes for protection from sand.



Domain:Eukaryota

Kingdom:Animalia

Phylum:Chordata

Class:Aves

Order:Pelecaniformes

Family:Pelecanidae

Pelecanus crispus

Characteristics:

The *Pelecanus crispus* (Dalmatian pelican) has :

Feathers: White with a grayish tint and curly plumes on the head in breeding season.

Beak: Large, thick with a yellow patch.

Size: 5–6 feet long.

Neck: Long and curved.

Legs: Short, for swimming. Eyes is Large and dark.



Kingdom: Animalia

Phylum: Chordata

Class: Aves

Order: Accipitriformes

Family: Accipitridae

Genus: Gypaetus

Species: G. barbatus

Gypaetus barbatus

Characteristics:

Size: Large bird

Head: Characterized by a striking black "beard" (a tuft of feathers on the chin) and dark eye patches around its eyes.

Body: Long, slender body with a strong build and a prominent, wedge-shaped tail.

Wings: Broad and long with a pointed shape

Beak: Large, hooked, and powerful beak, adapted for feeding on bone. Legs and Feet: Strong.



Kingdom:Animalia
Phylum:Chordata
Class:Aves
Order:Accipitriformes
Family:Accipitridae
Genus:Neophron
Species:N. percnopterus
Neophron percnopterus

Characteristics:

Size: Medium-sized bird

Head: The face is bald, with yellow skin around the eyes and beak.

Beak: Hooked, strong, and yellow in color, adapted for scavenging.

Legs: Long and slender, with yellowish legs.

Tail: Long, narrow, and slightly wedge-shaped.



Kingdom: Animalia

Phylum: Chordata

Class: Aves

Order: Accipitriformes

Family: Accipitridae

Genus: Haliaeetus

Species: H. vocifer

Haliaeetus vocifer

Characteristics:

Size: Medium to large; body

Beak: Large, hooked, yellow beak, adapted for catching fish.

Eyes: Large, yellow eyes with keen vision.

Feet: Strong talons for grasping prey.

Legs: Yellow, muscular legs for powerful flight and hunting.

Flight: Strong and agile, capable of soaring with ease over large bodies of water.



Kingdom:Animalia
Phylum:Chordata
Class:Aves
Order:Ciconiiformes
Family:Ciconiidae
Genus:Mycteria
Species:M. ibis
Mycteria ibis

Characteristics:

Size: Medium-sized bird

Beak: Long, slender, and curved downward, ideal for probing mud and water for food.

Head: Bare, black head with a long, curved beak.

Legs: Long, thin, and dark-colored legs.

Feet: Webbed feet, adapted for wading.

Neck: Long and flexible.



Kingdom:Animalia
Phylum:Chordata
Class:Aves
Order:Ciconiiformes
Family:Ciconiidae
Genus:Ciconia
Species:C. nigra
Ciconia nigra

Characteristics:

Size: Large bird

Beak: Long, straight, and red, adapted for catching fish and small animals.

Legs: Long and slender, typically red or pinkish in color.

Eyes: Dark, sharp eyes. Neck: Long, thin, and typically held extended when feeding or flying.

Wings: Broad and long, used for soaring during migration.

Flight: Powerful flyer, known for long migrations.



Kingdom: Animalia

Phylum: Chordata

Class: Aves

Order: Anseriformes

Family: Anatidae

Subfamily: Tadorninae

Genus: Alopochen

Species: aegyptiacus

Alopochen aegyptiacus

Characteristics:

Medium-sized bird.

Pale brown with dark eye patches.

Lives near water. Territorial and aggressive

Omnivorous (plants and small animals).

Native to Africa; found in Europe and North America.



Kingdom: Animalia

Phylum: Chordata

Class: Aves

Order: Anseriformes

Family: Anatidae

Genus: Cygnus

Cygnus sp.

Characteristics:

Large size with long necks

White or black feathers

Webbed feet for swimming

Strong pair bonds

Migratory in colder regions

Herbivorous diet.



Kingdom: Animalia

Phylum: Chordata

Class: Aves

Order: Anseriformes

Family: Anatidae

Genus: Anas

Species: clypeata

***Anas clypeata* (Northern Shoveler)**

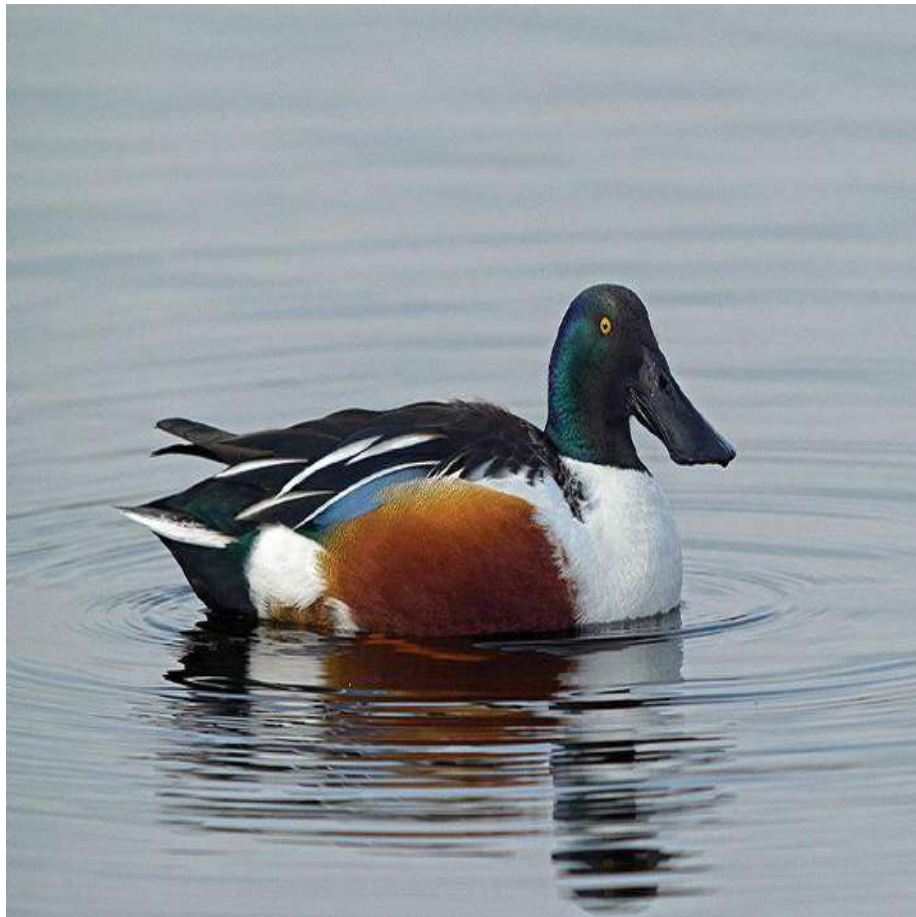
Characteristics:

Males have a green head, white chest, and chestnut-colored sides.

Females are mottled brown for camouflage.

Distinct Feature: Broad, spoon-shaped bill used for filtering food.

Diet: Omnivorous, feeding on aquatic plants, plankton, and small invertebrates. Behavior: Migratory species; forms flocks during migration and wintering.



Kingdom: Animalia

Phylum: Chordata

Class: Aves

Order: Strigiformes

Family: Strigidae

Genus: Athene

Species: Athene noctua

***Athene noctua* (Little Owl)**

Characteristics:

Size: Small bird. **Beak:** Short, hooked, and adapted for catching insects and small prey.

Legs: Short and feathered, suited for perching and hopping.

Eyes: Large, round, and yellow, providing excellent night vision.

Neck: Short and sturdy, allowing for a wide range of head movement. **Wings:** Rounded and relatively short, suitable for quick, agile flight. **Flight:** Strong but low and direct, often staying close to the ground. **Appearance:** Rounded head without ear tufts, yellow eyes, and white "eyebrow" markings giving a stern expression.



Phylum: Chordata

Class: Aves

Order: Strigiformes

Family: Tytonidae

Genus: Tyto

Species: Tyto alba

Subspecies: Tyto alba alba

Tyto alba alba (Barn Owl)

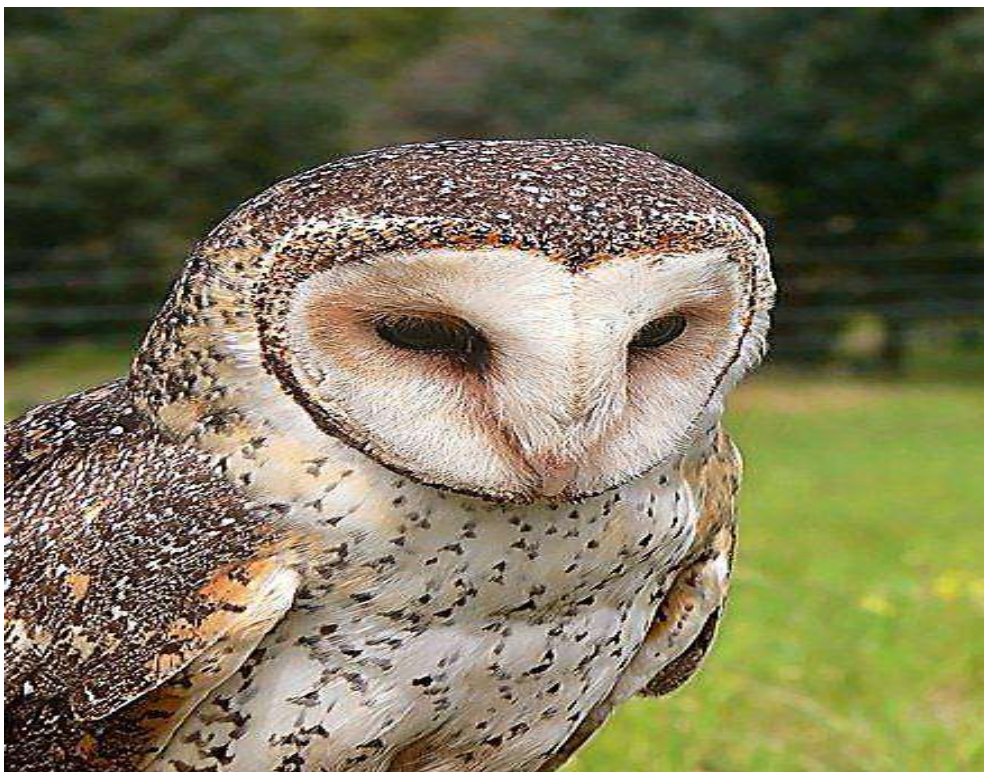
Characteristics:

Appearance: Medium-sized owl with a heart-shaped facial disc, white underside, and golden-brown upper parts.

Habitat: Found in open countryside, grasslands.

Diet: Feeds on small mammals, particularly rodents.

Size: Medium-sized bird. **Beak:** Short, pale, and hooked for tearing prey. **Legs:** Long and feathered, with strong talons for grasping prey. **Eyes:** Large, black, and forward-facing, giving excellent night vision. **Neck:** Short and flexible, aiding in silent scanning of surroundings.



Kingdom: Animalia

Phylum: Chordata

Class: Aves

Order: Strigiformes

Family: Strigidae

Genus: Bubo

Species: Bubo virginianus

Bubo virginianus (Great Horned Owl)

Characteristics:

Size: Large bird. **Beak:** Strong, hooked, and dark, adapted for tearing flesh.

Legs: Powerful and feathered, ending in sharp talons for gripping prey. **Eyes:** Large, yellow, and forward-facing, providing excellent night vision.

Neck: Short but flexible, allowing a wide range of head rotation.

Wings: Broad and powerful, designed for silent flight.

Flight: Strong and silent flyer, capable of sudden bursts of speed.



Domain: Eukaryota

Kingdom: Animalia

Phylum: Chordata

Class: Aves

Order: Anseriformes

Family: Anatidae

Genus: Spatula

Species: S. querquedula

Spatula querquedula

Characteristics:

The garganey's bill is broad and spatula-shaped dark grayish or bluish-gray color, which contrasts with the lighter head and body feathers.

The bill is wide and flattened at the tip

The wings have a characteristic pale blue-gray color with a dark, blackish speculum (the iridescent wing patch).



Domain: Eukaryota

Kingdom: Animalia

Phylum: Chordata

Class: Aves

Order: Anseriformes

Family: Anatidae

Subfamily: Tadorninae

Genus: Tadorna

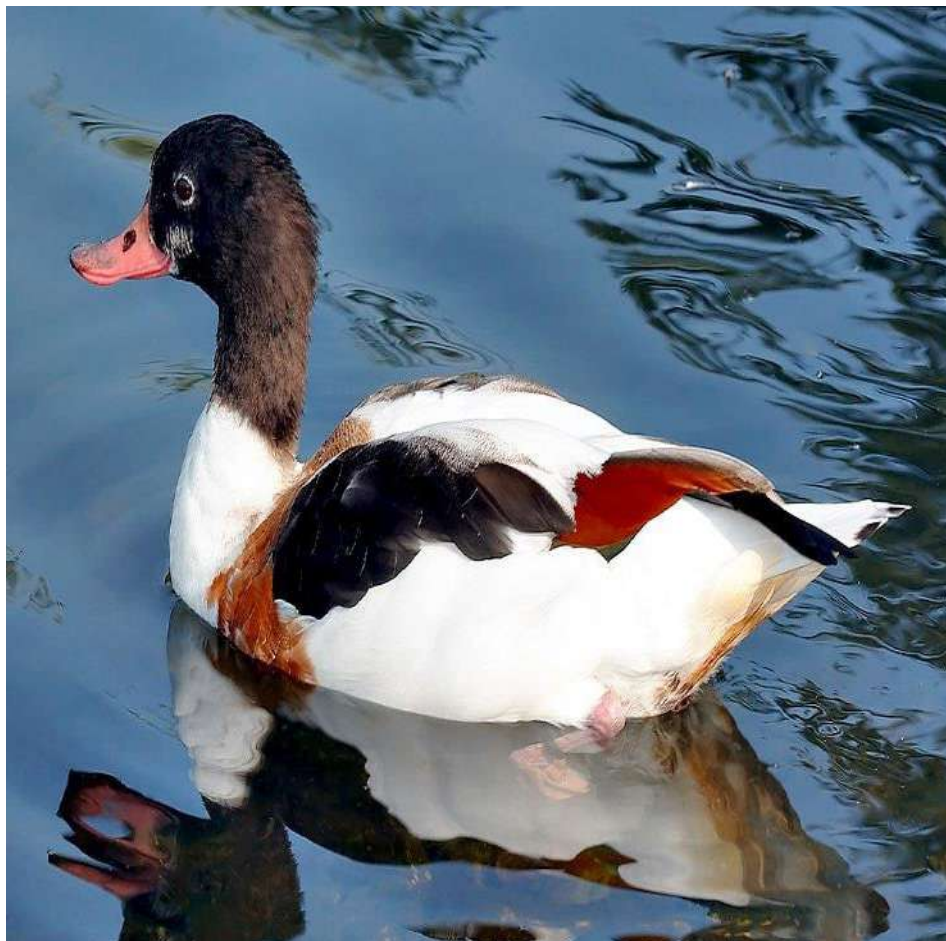
Characteristics:

Shelducks are large ducks, generally ranging in size from about 50 to 75 cm

They are long-necked, with a robust and sturdy body, giving them a more "goose-like" appearance compared to other ducks.

The bill of shelducks is broad and somewhat flattened

The legs of shelducks are short and strong.



Domain: Eukaryota
Kingdom: Animalia
Phylum: Chordata
Class: Aves
Order: Accipitriformes
Family: Accipitridae
Genus: Aquila
Species: A. chrysaetos

Characteristics:

The golden eagle has large wings, with each adult wings.

Feather Color: It has dark brown feathers covering most of its body, with a golden sheen on its head and the back of its neck, which gives it its name. **Beak:** The beak is strong, sharp, and curved downward, usually black at the tip and yellow at the base, enabling it to tear through meat easily. **Eyes:** Golden eagles have forward-facing, sharp eyes that help them focus on prey from long distances. Their eye color is often brown or golden. **Talons:** They possess powerful, sharp talons used for grabbing and securing prey, allowing them to hunt effectively.



Domain:Eukaryota
Kingdom:Animalia
Phylum:Chordata
Class:Aves
Order:Pelecaniformes
Family:Threskiornithidae
Genus:Plegadis
Species:P. falcinellus
Plegadis falcinellus

Characteristics:

Size: The glossy ibis is a medium-sized bird, It has a slender build with long legs. **Feather Color:** It has feathers that show a mix of dark , green, purple, and bronze color, which shine in sunlight.

Bill: The bill is long, thin, and downward-curving, helping it to probe for food in mud and shallow water.**Eyes and Face:** It has a small head with a narrow, white border around the face,. Its eyes are typically dark. **Legs:** The legs are long and dark.



Domain:Eukaryota
Kingdom:Animalia
Phylum:Chordata
Class:Aves
Order:Passeriformes
Family:Corvidae
Genus:Corvus
Species:C. rhipidurus

Characteristics:

Size: This raven is medium-sized compared to other ravens.

Feather Color: The fan-tailed raven has glossy black feathers, often with a slight sheen that can appear purple or blue in sunlight.

Tail: It has a unique fan-shaped tail. **Bill:** The bill is thick, strong, and black, slightly curved, adapted for a varied diet. **Wings:** Its wings are broad and slightly rounded

Legs and Feet: The legs and feet are sturdy and black.



Domain:Eukaryota

Kingdom:Animalia

Phylum:Chordata

Class:Aves

Order:Podicipediformes

Family:Podicipedidae

Genus:Podiceps

Species:P. grisegena

Podiceps grisegena

Characteristics:

Size: It is a medium to large grebe. **Face and Head :** It has a bold, white cheek patch and a black cap that extends down to its eyes, creating a striking contrast. In breeding plumage, the cheek and neck colors are particularly vibrant. **Bill:** The bill is long, sharp, and slightly upturned **Body Shape:** It has a streamlined, elongated body adapted for swimming and diving **Legs and Feet:** The legs are set far back on the body, and it has lobed toes.



Domain: Eukaryota

Kingdom: Animalia

Phylum: Chordata

Class: Aves

Order: Anseriformes

Family: Anatidae

Genus: Spatula

Species: S. clypeata

Spatula clypeata

Characteristics:

has a glossy green head, which contrasts with its white chest and belly. The head is rounded, and the eye is bright yellow, adding to its distinctive appearance.

The most characteristic feature of the northern shoveler is its large, spatula-shaped bill. The bill is wide and flat, with a noticeable blackish-green color.



Domain: Eukaryota
Kingdom: Animalia
Phylum: Chordata
Class: Aves
Order: Strigiformes
Family: Strigidae
Genus: Bubo
Species: B. virginianus
Bubo virginianus

Characteristics:

The Great Horned Owl is a large

The most notable feature of this owl is its "horns"

which are actually tufts of feathers on top of its head. These tufts give it the appearance of having "ears," but they are not functional as hearing organs. The Great Horned Owl has large, bright yellow eyes.



Domain: Eukaryota

Kingdom: Animalia

Phylum: Chordata

Class: Aves

Order: Strigiformes

Family: Strigidae

Genus: Athene

Species: A. noctua

Athene noctua

Characteristics:

is a small owl, measuring about 21–23 cm

The Little Owl has a round, flat face with a pronounced white facial disc. The eyes are large and yellow, giving it an alert and intense expression, which contrasts with its small size.

The beak is small, hooked, and yellowish in color, has strong, feathered feet with sharp talons, which it uses to capture and kill prey.



Domain: Eukaryota

Kingdom: Animalia

Phylum: Chordata

Class: Aves

Order: Strigiformes

Family: Strigidae

Genus: Asio

Species: A. otus

Asio otus

Characteristics:

Long-eared Owl is a medium-sized owl, measuring about 33 to 40 cm

Ear Tufts: The most distinctive feature of the Long-eared Owl is its long ear tufts, which give it a very characteristic "horned" appearance. large, round, yellow eyes. The beak is small, hooked, and dark-colored The Long-eared Owl has strong, sharp talons and feathered feet.



Domain: Eukaryota

Kingdom: Animalia

Phylum: Chordata

Class: Aves

Order: Accipitriformes

Family: Accipitridae

Genus: Elanus

Species: E. caeruleus

Elanus caeruleus

Characteristics:

The Black-winged Kite is a medium-sized raptor, measuring approximately 30 to 36 cm. The Black-winged Kite has a distinctive and striking plumage that is a mix of white, gray, and black:

The head is pale gray with a black line running through the eyes, which creates a “masked” appearance. The rest of the head, including the cheeks and throat, is white. The wings are long, narrow. The beak is hooked. Like most raptors, it has strong talons and sharp claws.



Domain: Eukaryota

Kingdom: Animalia

Phylum: Chordata

Class: Aves

Order: Falconiformes

Family: Falconidae

Genus: Falco

Species: F. tinnunculus

Characteristics:

The Common Kestrel is relatively small, measuring around 33–39 cm

Both males and females have a distinctive black "moustache" mark (a black line running from the beak to the neck), and dark spots or streaks on the chest and belly

eyes are typically yellow or amber, and the beak is hooked, which is typical for raptors.



Domain:Eukaryota

Kingdom:Animalia

Phylum:Chordata

Class:Aves

Order:Charadriiformes

Family:Laridae

Genus:Chroicocephalus

Species:C. ridibundus

characteristics:

Size: It is a medium-sized gull.

Head: it has a distinctive dark chocolate-brown head.

Plumage: The body is predominantly white with pale grey wings. The wing tips are black. **Beak and Legs:** The beak and legs are a bright reddish color, which stands out against the lighter plumage.

Eyes: It has a white eye-ring. **Tail:** The tail is short and white, adding to its streamlined appearance.



Domain:Eukaryota

Kingdom:Animalia

Phylum:Chordata

Class:Aves

Order:Falconiformes

Family:Falconidae

Genus:Falco

Species:F. naumanni

characteristics:

Size: it is a medium size

Male Plumage: Rusty-orange back, blue-grey head, and unmarked pale underparts. Female Plumage: Brownish back with streaks, buff underparts with spots, and a lighter head.

Wings: Long and pointed, adapted for agile flight. Tail: Long and slightly rounded with a black band near the tip. Beak: Small, curved, and dark, designed for catching prey. Legs: Yellow with sharp talons. Eyes: Large, encircled by a yellow eye-ring.



Domain: Eukaryota

Kingdom: Animalia

Phylum: Chordata

Class: Aves

Order: Accipitriformes

Family: Accipitridae

Genus: Elanus

Species: E. caeruleus

Characteristics:

Size: Medium-sized

Plumage: Pale grey above, white below, with striking black patches on the shoulders.

Head: White with red eyes and a black eye-stripe.

Wings: Long and pointed, mostly grey with black flight feathers.

Tail: Short and square-shaped, white underneath. **Beak:** Small, dark, and hooked. **Legs:** Yellow and slender with sharp talo



Domain:Eukaryota

Kingdom:Animalia

Phylum:Chordata

Class:Aves

Order:Strigiformes

Family:Strigidae

Genus:Asio

Species:A. otus

Characteristics:

Size: Medium-sized

Plumage: Mottled brown and buff with darker streaks for camouflage. **Head:** Distinctive long ear tufts (feather tufts) that point upwards. **Eyes:** Large, orange-yellow, with a black rim.

Facial Disc: Pale with dark edges, giving it a heart-shaped appearance. **Wings:** Broad and rounded, with a barred pattern.

Tail: Medium length with dark barring. **Beak:** Small and black.



Kingdom: Animalia

Phylum: Chordata

Class: Aves

Order: Falconiformes

Family: Falconidae

Genus: Falco

Falco naumanni

Characteristics:

Plumage: The plumage is generally light brown with darker spots or streaks on the wings and back. It has distinctive markings on the chest and back, which can appear as streaks or spots. **Face:** The face is typically lighter in color, with a dark line running from the eye down to the sides of the head. **Wings:** The wings are long and pointed, adapted for fast and precise flying, essential for hunting. **Eyes:** The eyes are sharp and focused, which helps the kestrel spot prey from a distance

Talons and Beak: It has sharp talons and a strong, curved beak, specialized for grasping and killing prey.



Kingdom: Animalia

Phylum: Chordata

Class: Aves

Order: Accipitriformes

Family: Accipitridae

Genus: Elanus

Species: Elanus caeruleus

Elanus caeruleus

Characteristics:

Plumage: It has a predominantly white underparts, while the upperparts are light grey with some darker grey shading on the wings and back. **Black Shoulder:** One of its most prominent features is the dark blackish patch on its shoulders, giving it a distinctive appearance. **Face:** The face is marked with a dark line around the eyes, resembling a "mask," and it has large, bright yellow eyes. **Beak:** The beak is sharp and hooked, characteristic of birds of prey. **Wings:** The wings are long and pointed, which allow the bird to glide and hover effectively while hunting. **Tail:** The tail is long and square-tipped, which is typical for a hovering raptor.



Kingdom: Animalia

Phylum: chordata

Class: Aves

Order: Falconiformes

Family: Falconidae

Genus: Falco

Species: Falco tinnunculus

Falco tinnunculus

Characteristics:

Plumage:The upperparts (back and wings) are reddish-brown to greyish-brown with dark spots or streaks.The underparts are lighter, often pale with dark streaks or spots on the chest and belly.

Face: The face is marked with a dark "mask" around the eyes, and there are dark streaks on the cheeks. **Eyes:** The eyes are large and bright yellow, giving it an alert and sharp appearance.. **Beak:** The beak is hooked and sharp, typical of birds of prey. **Wings:** The wings are long and pointed, ideal for fast, agile flight and maneuvering. **Tail:** The tail is long and slightly rounded, with dark edges.**Falco tinnunculus** is known for its ability to hover in the air (aerial hunting) by using air currents, and it often hunts small mammals and insects on the ground or in mid-air.



Kingdom: Animalia

Phylum: Chordata

Class: Aves

Order: Anseriformes

Family: Anatidae

وز صيني

Characteristics:

Neck: Long and flexible.

Beak: Broad, flat, and slightly pointed, used for grazing

Feet: Webbed, ideal for swimming.

Feathers: Thick, waterproof to keep them dry.

Wings: Large and strong for flying.

Tail: Short and fan-shaped.

Eyes: Large, dark, and sharp for good vision.

These traits help geese in swimming, flying, and foraging.



Kingdom: Animalia

Phylum: Chordata

Class: Aves

Order: Accipitriformes

Family: Accipitridae

Genus: Milvus

Species: Milvus milvus

Milvus milvus

Characteristics:

Plumage:Upperparts: The back and wings are brownish with some darker streaks, and the tail is long and forked. Underparts: The belly and chest are pale with streaks or spots, giving the bird a distinctive appearance. **Face:** The face is pale with a white or off-white throat, and it has a characteristic dark line extending from the beak to the eyes. **Tail:** The Red Kite has a long, deeply forked tail, which is one of its most distinguishing features.

Beak: The beak is sharp and hooked, typical of birds of prey, used for tearing apart food



Kingdom: Animalia

Phylum: Chordata

Class: Aves

Order: Accipitriformes

Family: Accipitridae

Genus: Circus

Species: Circus c

Circus cyaneus

Characteristics:

His head is white with a black "mustache" pattern around the face.

Female: The female is larger than the male and has a brownish body with streaked underparts, making her less striking but still recognizable

Face: The Hen Harrier has a unique "facial disk" or "cowl" (a feature that gives the bird an owl-like appearance), especially noticeable in the female and juvenile. This disk helps funnel sound toward the bird's ears, improving its hunting ability.

Tail: The tail is long and narrow, with a distinctive white band near the tip, which is visible in flight. Beak:



Kingdom: Animalia

Phylum: Chordata

Class: Aves

Order: Anseriformes

Family: Anatidae

Genus: Anas

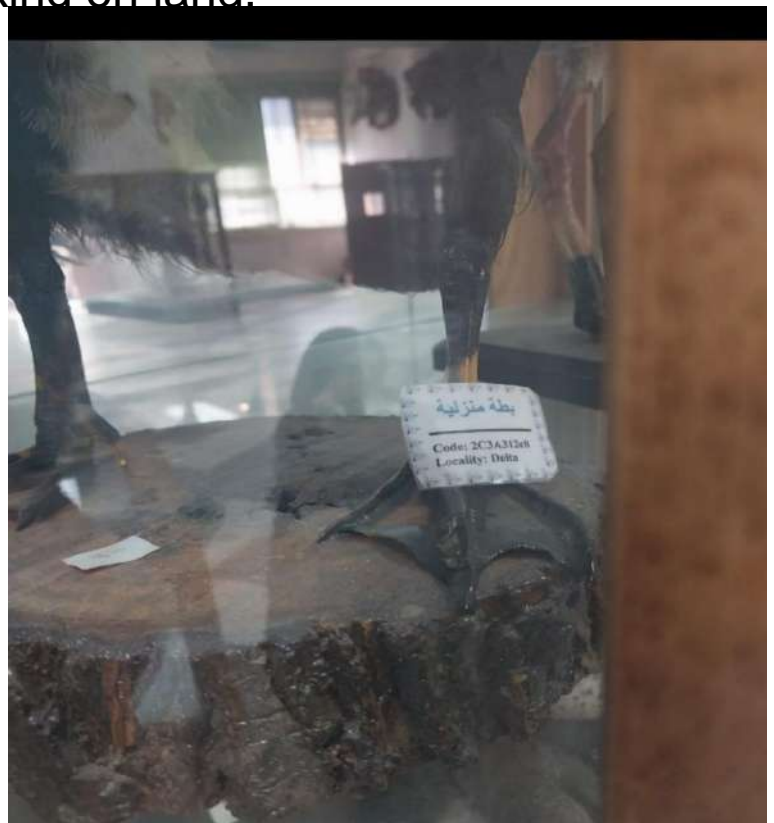
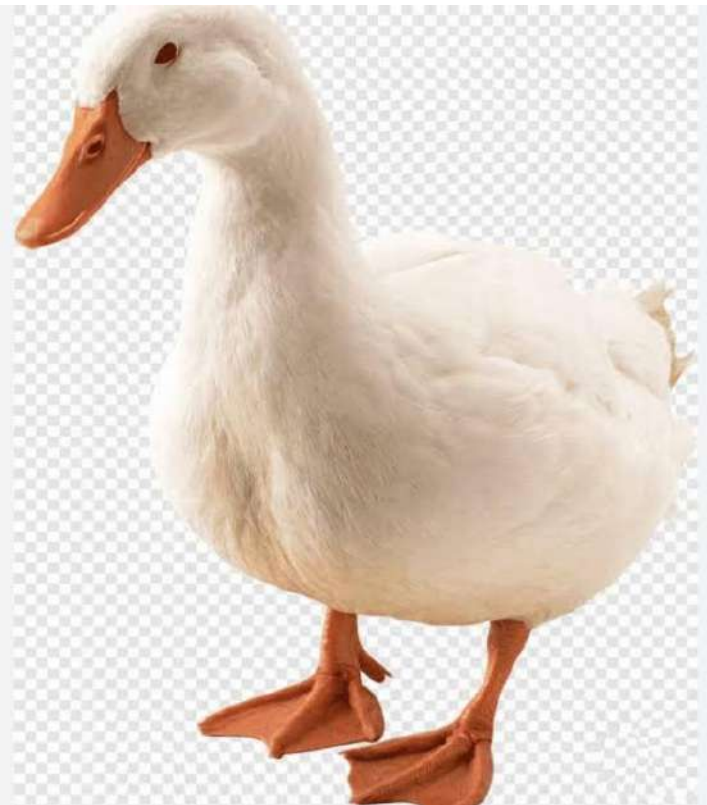
species: Anas platyrhynchos domesticus

بطة منزلية

Characteristics:

Plumage: Males: Male domestic ducks often have a white plumage with some other color variations like orange, black, or brown. They usually have a glossy head and a longer neck. Females: Female ducks typically have brownish or grayish plumage with some white or orange patches on their wings. **Face:** Domestic ducks have a broad, flat bill, which is characteristic of ducks. They also have large eyes. **Tail:** The tail is usually straight in domestic ducks, while wild ducks, like the Mallard, have a more curved tail.

Feet: Their legs are short and generally orange or yellow, aiding them in both swimming and walking on land.



Kingdom:Animalia

Phylum:Chordata

Class:Aves

Order:Phoenicopteriformes

Family:Phoenicopteridae

Genus:Phoenicopterus

Species:P. ruber

Phoenicopterus ruber

Characteristics:

Size: Large

Color: Bright pink-red with black-tipped wings.

Beak: Large, curved, pink with a black tip.

Neck: Long and flexible.

Legs: Long, slender, and pink.



Kingdom:Animalia

Phylum:Chordata

Class:Aves

Order:Phoenicopteriformes

Family:Phoenicopteridae

Genus:Phoeniconaias

Species:P. minor

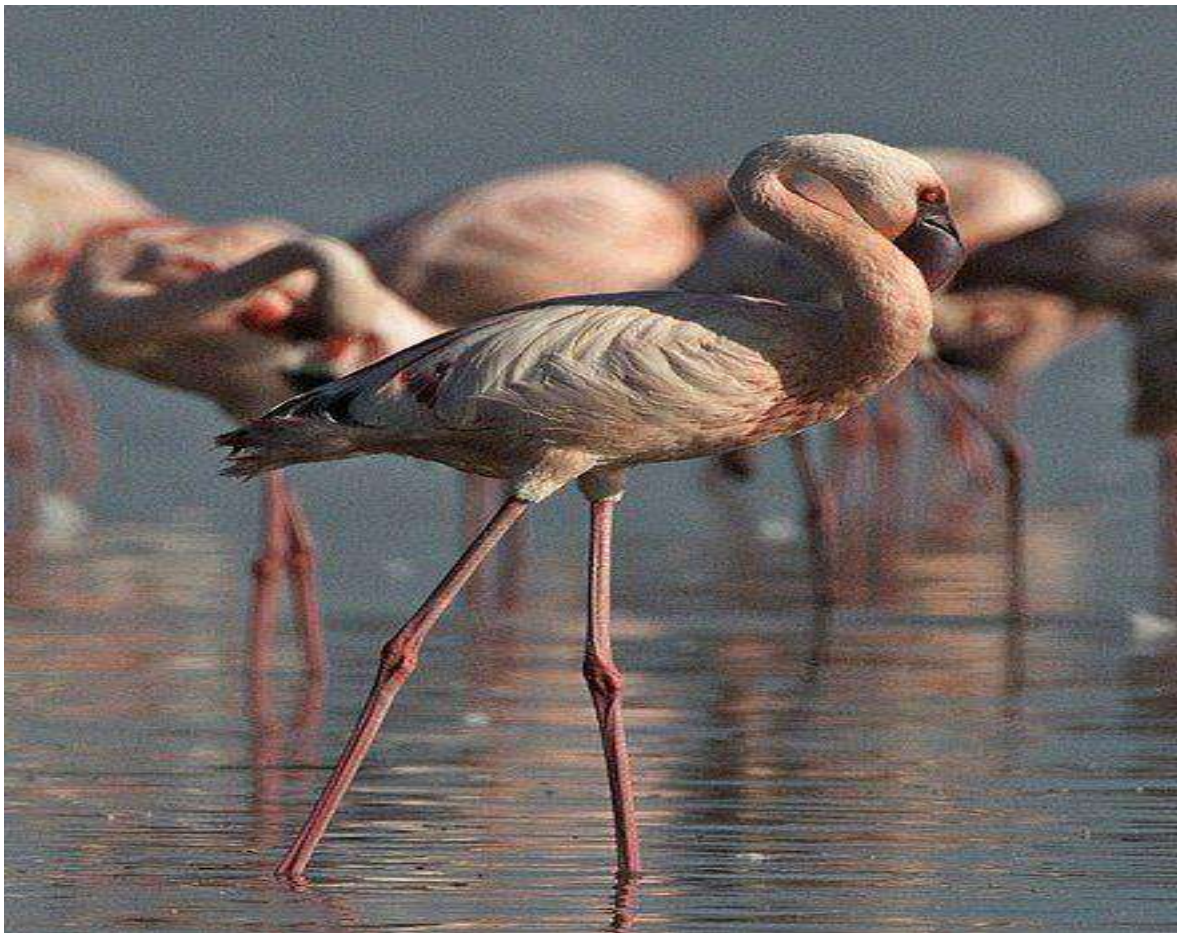
Phoenicopterus minor

Characteristics:

Size: Smallest flamingo species

Pale pink plumage with a deeper pink hue on the wings.

Black-tipped wings are visible during flight. Beak: Deep red, short, and curved downward, adapted for filtering algae and small organisms. Neck: Long, slender, and flexible. Legs: Long, thin, and pale pink. Adapted for wading in shallow waters. Feet: Webbed, aiding in stability and swimming.



Kingdom:Animalia

Phylum:Chordata

Class:Aves

Order:Pelecaniformes

Family:Ardeidae

Genus:Botaurus

Species:B. lentiginosus

Botaurus lentiginosus

Characteristics:

Size: Medium-sized heron

Coloration:Brownish body

Beak:Sharp, straight, and yellowish.Suited for catching fish and small prey.Neck:Thick and streaked, capable of vertical extension for blending with reeds.

Legs: Long, adapted for wading in wetlands.

Tail: Short.Feet: Long toes for stability on soft, marshy surfaces.



Kingdom: Animalia
Phylum: Chordata
Class: Aves
Order: Pelecaniformes
Family: Ardeidae
Genus: Ixobrychus
Species: Ixobrychus minutus
ixobrychus minutus

Characteristics:

Size: Smallest heron species

Coloration: Black back, crown, and wings with cream-colored underside. Beak: Thin, pointed, and yellowish, ideal for catching small prey. Neck: Short and flexible.

Legs: adapted for wading in shallow waters.

Tail: Short and rounded.

Feet: Long toes for stability on reeds and marshy grounds.



Kingdom:Animalia
Phylum:Chordata
Class:Aves
Order:Pelecaniformes
Family:Ardeidae
Genus:Nycticorax
Species:N. nycticorax
Nycticorax nycticorax

Characteristics:

Size: Medium-sized

Coloration: Black crown and back, grey wings, and white underside.

Beak: Short, stout, and black.

Neck: Short and thick.

Legs: Yellow-green, long, and slender.

Eyes: Red, adapted for night vision.Tail: Short.



Kingdom:Animalia
Phylum:Chordata
Class:Aves
Order:Pelecaniformes
Family:Ardeidae
Genus:Ardeola
Species:A. ralloides
Ardeola ralloides

Characteristics:

Size: Small heron

Coloration: Buff-brown body with white wings visible during flight.

Beak: Short, pointed, and blue with a black tip.

Neck: Short and thick, pale buff.

Legs: Greenish-yellow, slender.

Eyes: Yellow, sharp for spotting prey. Tail: Short and white.



Kingdom:Animalia
Phylum:Chordata
Class:Aves
Order:Pelecaniformes
Family:Ardeidae
Genus:Ardea
Species:A. purpurea
Ardea purpurea

Characteristics:

Size: Medium to large heron

Neck : Long neck

Beak: Long, sharp, and yellowish, adapted for fishing.

Legs: Long, slender, and yellowish-green, ideal for wading in shallow water.Eyes: Yellow with excellent vision for spotting prey.

Neck: S-shaped, highly flexible for striking at prey.

Tail: Short Feet: Large with elongated toes for stability in muddy



Kingdom: Animalia

Phylum: Chordata

Class: Aves

Order: Pelecaniformes

Family: Ardeidae

Genus: Egretta

Species: Egretta schistacea

Egretta schistacea

Characteristics:

Size: Medium-sized heron

Two color morphs: dark (slaty grey) and white.

Beak: Long, slender, and dark, suited for catching small aquatic prey. Legs: Long and dark

Eyes: Yellow with sharp vision for spotting prey.

Neck: Slender and elongated Tail: Short and blends with the body. Feet: Adapted for wading in shallow.



Domain:Eukaryota

Kingdom:Animalia

Phylum:Chordata

Class:Aves

Order:Charadriiformes

Family:Scolopacidae

Genus:Numenius

Species:N. arquata

Numenius arquata

Characteristics:

Large wading bird

Beak: Long, downward-curved, ideal for probing soft soil or mud.

Plumage: Brownish-grey with dark spots, providing excellent camouflage; lighter on the underparts.



Domain:Eukaryota
Kingdom:Animalia
Phylum:Chordata
Class:Aves
Order:Passeriformes
Family:Hirundinidae
Genus:Riparia
Species:R. riparia
Riparia riparia

Characteristics:

Description: Riparia riparia (Sand Martin)

1. Size: Small bird
2. Plumage: Brown upperparts, white underparts, and a distinctive brown band across the chest.
3. Beak: Short and pointed, adapted for catching insects in flight.
4. Tail: Forked, aiding in agile flight.



Domain:Eukaryota
Kingdom:Animalia
Phylum:Chordata
Class:Aves
Order:Galliformes
Family:Phasianidae
Genus:Chrysolophus
Species:C. pictus
Chrysolophus pictus

Characteristics:

Chrysolophus pictus (Golden Pheasant)

1. Size: Medium-sized bird
2. Plumage: Vibrant golden-yellow crest, red underparts, and metallic green upper back. Males are more colorful than females.
3. Beak: Short and yellow, suitable for foraging.
4. Tail: Long and barred, especially prominent in males.



Domain:Eukaryota

Kingdom:Animalia

Phylum:Chordata

Class:Aves

Order:Galliformes

Family:Phasianidae

Genus:Gallus

Species:G. g. domesticus

Gallus gallus domesticus

Characteristics:

Gallus gallus domesticus (Domestic Chicken)

Size: Medium-sized bird, with variations depending on breed.

Plumage: Wide variety of colors and patterns, depending on breed.

Beak: Short and sturdy, adapted for pecking grains and food.

Comb and Wattles: Prominent fleshy comb on the head and wattles under the beak, typically red.

Tail: Short in hens; long and arched in roosters.



Domain:Eukaryota

Kingdom:Animalia

Phylum:Chordata

Class:Aves

Order:Charadriiformes

Family:Recurvirostridae

Genus:Himantopus

Species:H. himantopus

Himantopus himantopus

Characteristics:

Himantopus himantopus (Black-winged Stilt)

Size: Medium-sized wader

Legs: Exceptionally long, slender, and pink, ideal for wading in shallow waters. Plumage: Black upper wings and white body; males may have a greenish sheen, while females are duller.

Beak: Long, thin, and black, perfect for picking small aquatic prey.

Tail: Short and inconspicuous.



Domain:Eukaryota

Kingdom:Animalia

Phylum:Chordata

Class:Aves

Order:Galliformes

Family:Phasianidae

Genus:Lophura

Species:L. nycthemera

Lophura nycthemera

Characteristics:

Lophura nycthemera (Silver Pheasant) Size: Medium to large bird

Plumage:

Male: Striking white body with black patterns, a glossy blue-black crest, and a long white tail.

Female: Brownish plumage with less distinct markings for camouflage. Beak: Pale-colored, short, and strong for foraging.

Legs: Red and robust, with spurs in males.

Tail: Long and ornate in males, shorter and simpler in females.



Domain:Eukaryota

Kingdom:Animalia

Phylum:Chordata

Class:Aves

Order:Charadriiformes

Family:Burhinidae

Genus:Burhinus

Species:B. senegalensis

Burhinus senegalensis inornatus

Characteristics:

Burhinus senegalensis inornatus (Senegal Thick-knee)

Size: Medium-sized wader, about 35-41 cm in length.

Plumage: Sandy-brown with darker streaks, providing excellent camouflage; underparts are lighter.

Eyes: Large yellow eyes, adapted for nocturnal activity.

Beak: Short and yellow with a black tip, suitable for feeding on insects and small prey. Legs: Long and yellow, adapted for walking in open habitats. Tail: Short and rounded, matching the body coloration.



Domain:Eukaryota

Kingdom:Animalia

Phylum:Chordata

Class:Aves

Order:Charadriiformes

Family:Burhinidae

Genus:Burhinus

Species:B. senegalensis

Burhinus senegalensis inornatus

Characteristics:

Burhinus senegalensis inornatus (Senegal Thick-knee)

Medium-sized wader, about 35-41 cm in length.

Plumage: Sandy-brown with darker streaks, providing excellent camouflage; underparts are lighter.

Eyes: Large yellow eyes, adapted for nocturnal activity.

Beak: Short and yellow with a black tip, suitable for feeding on insects and small prey.

Legs: Long and yellow, adapted for walking in open habitats.

Tail: Short and rounded, matching the body coloration.



Kingdom: Animalia

Phylum: Chordata

Class: Aves

Order: Galliformes

Family: Phasianidae

Genus: Chrysolophus

Species: Chrysolophus pictus

Chrysolophus pictus

Characteristics:

Chrysolophus pictus (Golden Pheasant)

Plumage: The male has striking, vibrant colors. The crest is bright yellow with a golden hue, the body is rich red with metallic green on the back, and the tail is long and ornate with golden and black markings.

most of the length coming from the tail.

Beak: Short, yellow, and stout for foraging.

Distinctive Features: The male is much more colorful than the female, with its long, flowing tail feathers and bright plumage.



Kingdom: Animalia
Phylum: Chordata
Class: Aves
Order: Coraciiformes
Family: Meropidae
Genus: Merops
Species: Merops apiaster
Merops apiaster

Characteristics:

Size: Medium-sized bird.

Beak: Long, slightly curved, and black, suited for catching insects mid-air. Legs: Short and weak, adapted for perching rather than walking. Eyes: Red-brown, providing excellent vision for spotting prey.

Neck: Slim and flexible, aiding in precise movements.

Wings: Long and pointed, ideal for agile, high-speed flight.

Flig



Kingdom: Animalia

Phylum: Chordata

Class: Aves

Order: Passeriformes

Family: Passeridae

Genus: Passer

Species: Passer domesticus

Passer domesticus

Characteristics:

Size: Small bird, around 14–16 cm in length.

Beak: Short, stout, and conical, adapted for seed-eating.

Legs: Thin and agile, suitable for perching and hopping.

Eyes: Dark and alert, providing good vision for spotting food.

Neck: Short and compact, supporting frequent head movements.

Wings: Rounded, enabling quick and agile flights over short distances. **Flight:** Rapid and direct, often in small flocks.



Kingdom: Animalia
Phylum: Chordata
Class: Aves
Order: Passeriformes
Family: Fringillidae
Genus: Acanthis
Species: Acanthis cannabina
Acanthis cannabina

Characteristics:

Size: Small bird, about 13–14 cm in length.

Beak: Short and conical, adapted for eating seeds.

Legs: Thin and suited for perching on branches. **Eyes:** Small and dark, aiding in spotting seeds and insects. **Neck:** Short and compact, typical of small passerines.

Wings: Pointed, enabling agile and sustained flights. **Flight:** Swift and undulating, often seen in flocks. **Diet:** Primarily seeds, but also small insects during the breeding season. **Habitat:** Open areas such as farmland, heathlands, grasslands, and coastal dunes. Often seen in hedgerows and shrubs.



Kingdom: Animalia
Phylum: Chordata
Class: Aves
Order: Coraciiformes
Family: Meropidae
Genus: Merops
Species: Merops orientalis
Merops orientalis

Characteristics:

Size: Small and slender bird.

Plumage: Vibrant green with hints of blue around the throat and chin. **Tail:** Long, central tail feathers that extend beyond the rest, giving a forked appearance. **Beak:** Long, slender, and slightly curved, adapted for catching insects, especially bees.

Diet: Primarily feeds on flying insects, including bees, wasps, and dragonflies. **Habitat:** Found in open woodlands, grasslands, and near water bodies in parts of Africa, the Middle East, and South Asia.

Behavior: Known for its aerial agility and ability to catch insects mid-flight.



Kingdom: Animalia
Phylum: Chordata
Class: Aves
Order: Passeriformes
Family: Turdidae
Genus: Turdus
Species: Turdus merula
Turdus merula

Characteristics:

Size: Medium-sized songbird.

Plumage: Males: Glossy black with a bright yellow-orange beak and eye ring. Females: Brown with lighter underparts and a duller beak. **Beak:** Straight, sharp, and adapted for feeding on a variety of food, including insects, fruits, and worms. **Legs:** Sturdy and adapted for hopping and foraging on the ground. **Song:** Melodious and varied, often considered one of the most beautiful among birds. **Habitat:** Found in woodlands, gardens, and parks across Europe, Asia, and North Africa; introduced to other regions like Australia and New Zealand. **Behavior:** Known for its territorial nature, especially during the breeding season.



Kingdom: Animalia
Phylum: Chordata
Class: Aves
Order: Passeriformes
Family: Hirundinidae
Genus: Hirundo
Species: Hirundo rustica
Hirundo rustica

Characteristics:

Size: Small to medium-sized passerine bird. **Plumage:** Glossy blue-black upperparts with a reddish-brown face, throat, and underparts. Long, deeply forked tail with white spots.

Beak: Small and wide, adapted for catching insects in flight.

Wings: Long, pointed wings that make them strong and agile flyers.

Flight: Exceptional at aerial maneuvers, catching insects mid-flight, and migrating over long distances. **Diet:** Insects, especially flies, mosquitoes, and beetles. **Habitat:** Prefers open spaces near water and often nests in human-made structures like barns or bridges.

Migration: Migrates seasonally, traveling between breeding grounds in Europe and Asia to wintering areas in Africa.



Kingdom: Animalia

Phylum: Chordata

Class: Aves

Order: Passeriformes

Family: Muscicapidae

Genus: Luscinia

Species: Luscinia svecica

Luscinia svecica

Characteristics:

Size: Small songbird.

Plumage: Males: Bright blue throat with a white or reddish center, often bordered with black, and brown upperparts. Females: More muted colors, with a pale or streaked throat.

Beak: Small, pointed, and adapted for feeding on insects and small invertebrates.

Habitat: Found in wetlands, reed beds, and forest edges, particularly in northern Europe, Asia, and parts of North Africa.

Song: Rich and melodious, often sung from a perch.

Behavior: Known for its agility and often found hopping along the ground or in dense vegetation.



Kingdom: Animalia

Phylum: Chordata

Class: Aves

Order: Columbiformes

Family: Columbidae

Genus: Streptopelia

Species: Streptopelia senegalensis

Streptopelia senegalensis

Characteristics:

Size: Medium-sized dove.

Plumage: Pale grayish-brown body with a distinctive black crescent-shaped line (collar) on the back of the neck. Underparts are light-colored, typically whitish or pale brown.

Beak: Small and pointed, suited for feeding on seeds.

Legs: Thin and reddish. **Flight:** Strong, direct flight with fast wing beats.

Diet: Primarily seeds, grains, and fruits. **Habitat:** Common in urban areas, farmlands, and open woodlands across parts of the Middle East, Africa, and Asia.



Kingdom: Animalia

Phylum: Chordata

Class: Aves

Order: Bucerotiformes

Family: Upupidae

Genus: Upupa

Species: Upupa epops

Upupa epops

Characteristics:

Size: Medium-sized bird, about 25–32 cm in length.

Plumage: orange-brown feathers with black and white patterns.

A distinctive fan-shaped crest on the head.

Beak: Long, thin, and slightly curved, ideal for probing the ground.

Eyes: Large, dark eyes. **Legs:** Short and sturdy for walking on the

ground. **Diet:** Primarily insects, including beetles, ants, and

caterpillars. **Habitat:** Found in open woodlands, farmlands, and

gardens across Europe, Asia, and parts of North Africa.

Behavior: Known for its distinctive call, resembling a hollow "trumpet," and its curious head-bobbing behavior.



Kingdom: Animalia

Phylum: Chordata

Class: Aves

Order: Passeriformes

Family: Motacillidae

Genus: Motacilla

Species: Motacilla alba

Motacilla alba

Characteristics:

Size: Small songbird, typically around 18–23 cm in length. **Plumage:** White underparts with a distinctive black-and-white pattern on the head and upperparts. Males typically have a darker blackish-gray back and a black cap on their head. **Beak:** Small and straight, adapted for catching insects. **Tail:** Long and often wagging, a characteristic feature of the wagtail species. **Diet:** Primarily insects, such as flies, beetles, and other small invertebrates. **Habitat:** Found in a wide variety of habitats, including grasslands, wetlands, riversides, and urban areas across Europe, Asia, and parts of North Africa. **Behavior:** Known for its characteristic tail-wagging behavior and for running on the ground in search of food.



Kingdom: Animalia

Phylum: Chordata

Class: Aves

Order: Passeriformes

Family: Alaudidae

Genus: Galerida

Species: Galerida cristata

Galerida cristata

Characteristics:

Size: Medium-sized lark, typically around 18–20 cm in length.

Plumage: Generally brown and streaked with a crest on top of the head. The subspecies *nigricans* often has darker plumage compared to other subspecies of the crested lark.

Beak: Small, straight, and conical, adapted for feeding on seeds and insects. **Tail:** Short and slightly notched.

Diet: Primarily seeds, grains, and small insects. **Habitat:** Common in open, dry, and sandy areas, including fields, grasslands, and agricultural land. **Behavior:** Known for its ability to fly short distances and often found foraging on the ground. The call is a series of chirps and whistles.



Kingdom: Animalia

Phylum: Chordata

Class: Aves

Order: Coraciiformes

Family: Alcedinidae

Genus: Ceryle

Species: Ceryle rudis

Ceryle rudis

Characteristics:

Size: Medium-sized kingfisher, typically around 26–30 cm in length. **Plumage:** Bright blue wings and back, with a white underside and a grayish head. The throat and upper chest are white, and it has a distinct black line through its eyes.

Beak: Long, straight, and sharp, perfect for catching fish and other small aquatic prey. **Legs:** Short, adapted for perching and diving.

Diet: Primarily fish, but also small amphibians, insects, and crustaceans.

Habitat: Found near rivers, lakes, and coastal areas across tropical and subtropical regions in Africa and Asia.

Behavior: Often seen perched on exposed branches or rocks, hunting for fish, and diving into the water to catch prey.



Domain:Eukaryota

Kingdom:Animalia

Phylum:Chordata

Class:Aves

Order:Charadriiformes

Family:Charadriidae

Genus:Charadrius

Species:C. dubius

Charadrius dubius

Characteristics:

Size: Small bird

Color: Brownish upperparts and white underparts.

Head: Distinctive black and white pattern with a black band across the forehead.

Beak: Short and black. Wings: Long and pointed, suitable for fast flight. Tail: Short and slightly rounded.

Legs: Long and yellowish.

Eyes: Dark with a prominent yellow eye-ring.



Domain:Eukaryota

Kingdom:Animalia

Phylum:Chordata

Class:Aves

Order:Charadriiformes

Family:Laridae

Genus:Chlidonias

Species:C. niger

Chlidonias niger

Characteristics:

Size: Small bird

Color (Breeding Plumage): Black head, neck, and chest, with dark gray wings and back.

Color (Non breeding plumage): White head and underparts with gray wings and back.

Beak: Short, thin, and black. Wings: Long and pointed, ideal for agile flight. Tail: Forked and grayish.Legs: Short and dark red or blackish.Eyes: Small and dark, blending with the black head in breeding plumage.



Domain:Eukaryota

Kingdom:Animalia

Phylum:Chordata

Class:Aves

Order:Charadriiformes

Family:Charadriidae

Genus:Anarhynchus

Species:A. leschenaultii

Anarhynchus leschenaultii

Characteristics:

Size: Medium-sized

Color: Grayish-brown upperparts and white underparts.

Beak: Long, slightly upturned, and black, ideal for probing mud.

Wings: Long and pointed, with a brownish tone.

Tail: Short and straight, grayish in color.Legs: Long, slender, and orange-yellow.Eyes: Small and dark, positioned prominently on the head.



Domain:Eukaryota
Kingdom:Animalia
Phylum:Chordata
Class:Aves
Order:Psittaciformes
Family:Cacatuidae
Genus:Cacatua
Subgenus:Cacatua
Species:C. sulphurea
Cacatua sulphurea

Characteristics:

Size: Medium-sized Color: Mostly white with a yellow crest and yellowish tones under the wings and tail.Crest: Prominent, bright yellow, and can be raised or lowered.Beak: Short, strong, and black. Wings: Broad and rounded, primarily white. Tail: Medium-length and fan-shaped, white with hints of yellow.Legs: Short and gray, adapted for perching.Eyes: Dark brown or black, with a bare patch of skin around them.



Domain:Eukaryota

Kingdom:Animalia

Phylum:Chordata

Class:Aves

Order:Psittaciformes

Family:Psittaculidae

Genus:Psittacula

Species:P. krameri

Psittacula krameri

Characteristics:

Size: Medium-sized parrot

Color: Bright green body with a red ring around the beak and a black or pink neck ring (in males).

Beak: Short, curved, and reddish.Wings: Long and pointed, green with bluish hues on the tips.Tail: Long and tapering, with bluish-green tones.Legs: Short and gray, well-suited for climbing and perching. Eyes: Small, yellowish with a black pupil.



Domain:Eukaryota

Kingdom:Animalia

Phylum:Chordata

Class:Aves

Order:Columbiformes

Family:Columbidae

Genus:Streptopelia

Species:S. turtur

Streptopelia turtur

Characteristics:

Size: Medium-sized dove

Color: Grayish-brown upperparts with black and white streaks on the neck.

Underparts: Pinkish on the chest, fading to pale gray on the belly.

Beak: Short, slender, and dark. Wings: Broad and patterned with brown and black. Tail: Long and slightly rounded with white edges.

Legs: Short and reddish. Eyes: Dark with a reddish eye-ring.



Domain:Eukaryota
Kingdom:Animalia
Phylum:Chordata
Class:Aves
Order:Coraciiformes
Family:Alcedinidae
Subfamily:Halcyoninae
Genus:Halcyon
Species:H. smyrnensis
Halcyon smyrnensis

Characteristics:

Size: Medium-sized bird

Color: Bright blue back, wings, and tail.

Head and Chest: Rich chestnut brown with a white patch on the throat and chest.

Beak: Long, thick, and bright red. Wings: Broad and pointed, with vivid blue and black tones. Tail: Short and vibrant blue.

Legs: Short and bright red. Eyes: Dark and prominent.



Domain:Eukaryota
Kingdom:Animalia
Phylum:Chordata
Class:Aves
Order:Passeriformes
Family:Laniidae
Genus:Lanius
Species:L. excubitor
Lanius excubitor

Characteristics:

Size: Medium-sized bird

Color: Gray upperparts with a white underside.

Head: Black mask across the eyes with a gray crown.

Beak: Short, hooked, and black, adapted for catching prey.

Wings: Black with a white patch visible in flight.

Tail: Long and black with white edges.Legs: Short and black. Eyes: Dark and positioned within the black mask.



Domain:Eukaryota

Kingdom:Animalia

Phylum:Chordata

Class:Aves

Order:Passeriformes

Family:Muscicapidae

Genus:Luscinia

Species:L. luscinia

Luscinia luscinia

Characteristics:

Size: Small bird

Color: Brown upperparts with slightly darker wings and tail.

Underparts: Pale grayish-brown with a lighter throat and belly.

Beak: Thin, straight, and dark brown.

Wings: Short and rounded, brown in color.

Tail: Medium-length and reddish-brown. Legs: Slender and pale pinkish-brown. Eyes: Dark and round, giving a sharp expression.



Domain:Eukaryota
Kingdom:Animalia
Phylum:Chordata
Class:Aves
Order:Passeriformes
Family:Sturnidae
Genus:Sturnus
Species:S. vulgaris
Sturnus vulgaris

Characteristics:

1. Size: Medium-sized bird
2. Plumage: Shiny black feathers with a greenish or purplish sheen, especially in sunlight.
3. Spots: Yellow or white spots cover the body, more prominent in winter.
4. Beak: Pointed, yellowish in summer and darker in winter.
5. Eyes: Dark brown eyes.
6. Legs and Feet: Pinkish or reddish legs.
7. Wings: Pointed, triangular-shaped wings.
8. Tail: Short, square tail.



Domain:Eukaryota

Kingdom:Animalia

Phylum:Chordata

Class:Aves

Order:Charadriiformes

Family:Laridae

Genus:Onychoprion

Species:O. anaethetus

Onychoprion anaethetus

Characteristics:

1. Size: Medium-sized bird

2. Coloration: It has a predominantly white body with a black cap on the head.

3. Beak: Sharp, slender, and black.4. Wings: Long, pointed wings with a black edge. 5. Tail: Forked tail with a distinct black line at the tips. 6. Eyes: Dark eyes, often highlighted by the black markings on the face, resembling a "bridle" pattern.

7. Legs: Short and black

.



Kingdom: Animalia

Phylum: Chordata

Class: Aves

Order: Coraciiformes

Family: Coraciidae

Genus: Coracias

Species: Coracias garrulus

Coracias garrulus

Characteristics:

The European Roller has vibrant blue and green feathers on its upper body, with yellow or white on its underside.

It has a strong, slightly curved beak, large wings, and a long, pointed



Kingdom : Animalia

Phylum: Chordata

Class: Aves

Order: Cuculiformes

Family: Cuculidae

Genus: Centropus

Species: Centropus senegalensis

Centropus senegalensis

Characteristics:

Centropus senegalensis aegyptius has a dark brown to black plumage, with a long, broad tail and striking red eyes. It has a robust body, a slightly curved bill, and is adapted to woodland and savanna habitats



Kingdom: Animalia

Phylum: Chordata

Class: Aves

Order: Passeriformes

Family: Corvidae

Genus: Corvus

Species: Corvus corone

Corvus corone

Characteristics:

Corvus corone, known as the Carrion Crow, has entirely black plumage with a slightly glossy sheen. It has a robust bill, strong legs, and a slightly rounded tail, typically found in woodlands



Kingdom: Animalia

Phylum: Chordata

Class: Aves

Order: Passeriformes

Family: Corvidae

Genus: Corvus

Species: Corvus ruficollis

***Corvus ruficollis* (Red-necked Crow)**

Characteristics:

Morphological Features: *Corvus ruficollis* has black plumage with a distinct reddish-brown patch on its neck.

It has a strong, thick beak and dark eyes, with a slightly rounded tail. The bird is medium-sized, with a robust body and long wings.



Phylum: Chordata

Class: Aves

Order: Charadriiformes

Family: Charadriidae

Genus: Vanellus

Species: Vanellus vanellus

Vanellus vanellus

Characteristics:

Vanellus vanellus has black and white plumage with a greenish sheen on

its back. It features a black crown, a white face, and a crest on its head. The bird has long legs, a

slightly upturned beak, and broad, pointed wings. It also produces a distinctive call.



Kingdom: Animalia

Phylum: Chordata

Class: Aves

Order: Charadriiformes

Family: Charadriidae

Genus: Vanellus

Species: Vanellus spinosus

Vanellus spinosus

Characteristics:

Vanellus spinosus has a distinctive black and white plumage, with a dark greenish

sheen on the back. It features a prominent black crown, white face, and a long, sharp crest. The bird has

long legs, a slightly upturned beak, and broad wings, with a characteristic spiny projection on its wings,

which is most noticeable during flight. It also has a loud, harsh call.



Kingdom: Animalia

Phylum: Chordata

Class: Aves

Order: Charadriiformes

Family: Charadriidae

Genus: Charadrius

Species: Charadrius mongolus

Charadrius mongolus

Characteristics:

Medium-sized (20-22 cm). Pale brown-grey back with white underparts. Dark chest band. Black line running from the bill to the eye. Short, dark bill and yellowish leg



Kingdom: Animalia

Phylum: Chordata

Class: Aves

Order: Charadriiformes

Family: Sternidae

Genus: Sterna

Species: Sterna anaethetus

Sterna anaethetus

Characteristics:

it has a slender body, long pointed wings, a sharp bill, and distinct black

markings on its head and upperparts.





Class Mammalia



Domain:Eukaryota

Kingdom:Animalia

Phylum:Chordata

Class:Mammalia

Order:Artiodactyla

Family:Camelidae

Camelus dromedarius

Characteristics:

Single Hump: A prominent single hump on its back, used for fat storage. **Long Legs:** Slender, long legs adapted for walking on sand. **Narrow Chest:** A relatively narrow chest compared to other camel species. **Short, Sleek Coat:** Light brown to sandy-colored short fur, which reflects sunlight. **Large Eyes with Long Eyelashes:** Protect against sand and intense sunlight. **Nostrils:** Can close tightly to prevent sand from entering. **Wide, Padded Feet:** Broad, cushioned feet with two toes, ideal for walking on soft sand. **Long Neck:** A characteristic elongated neck allowing it to reach high vegetation. **Small, Rounded Ears:** Covered with hair to keep sand out. **Tail:** Medium-length tail with a tuft of hair at the end.



Domain:Eukaryota
Kingdom:Animalia
Phylum:Chordata
Class:Mammalia
Order:Perissodactyla
Family:Equidae
Equus ferus caballus

Characteristics :

Muscular body with long legs.

Varied coat colors (black, brown, gray, etc.).

Long mane and tail.

Medium-sized head with large eyes and mobile ears.

Hard hooves.

Large nostrils.

Size varies by breed.



Domain:Eukaryota

Kingdom:Animalia

Phylum:Chordata

Class:Mammalia

Order:Artiodactyla

Family:Bovidae

Bos taurus

Characteristics:

Large Body: Muscular and robust body.

Coat: Varied colors and patterns (black, brown, white, or mixed).

Horns: Present in some breeds, curved or straight, while others are polled (hornless). Ears: Medium-sized, drooping or upright depending on the breed.

Eyes: Large, round eyes. Tail: Long tail with a tuft of hair at the tip.

Hooves: Split hooves (cloven). Udder: Visible udder in females.

Neck and Dewlap: Thick neck with a prominent dewlap in some breeds. Size: Varies by breed, ranging from small to very large.



Kingdom: Animalia

Phylum: Chordata

Class: Mammalia

Order: Artiodactyla

Family: Bovidae

Capra ibex

Characteristics:

Body: Stocky and muscular, adapted for climbing.

Coat: Thick brown-gray fur, darker in winter and lighter in summer.

Horns: Large, curved horns present in males, with ridges along the length. Females have smaller, thinner horns.

Legs: Strong, short legs with split hooves adapted for rocky terrain.

Beard: Males often have a short, dark beard.

Eyes: Horizontal pupils for panoramic vision.

Size: Males larger (up to 100 kg) than females.



Kingdom: Animalia

Phylum: Chordata

Class: Mammalia

Order: Eulipotyphla

Family: Erinaceidae

Erinaceus sinaicus

Characteristics:

Size: Small, typically 15–25 cm in length.

Coat: Covered with spines on the back and sides, and soft fur on the belly.

Color: Spines are usually brownish or gray, and fur is lighter.

Head: Pointed snout with small eyes and ears.

Legs: Short legs with sharp claws for digging.

Behavior: Rolls into a ball for defense when threatened.

Habitat: Found in deserts and arid regions, including Sinai.



Kingdom: Animalia

Phylum: Chordata

Class: Mammalia

Order: Perissodactyla

Family: Equidae

Genus: Equus

Species: asinus

***Equus asinus* (Donkey)**

Characteristics:

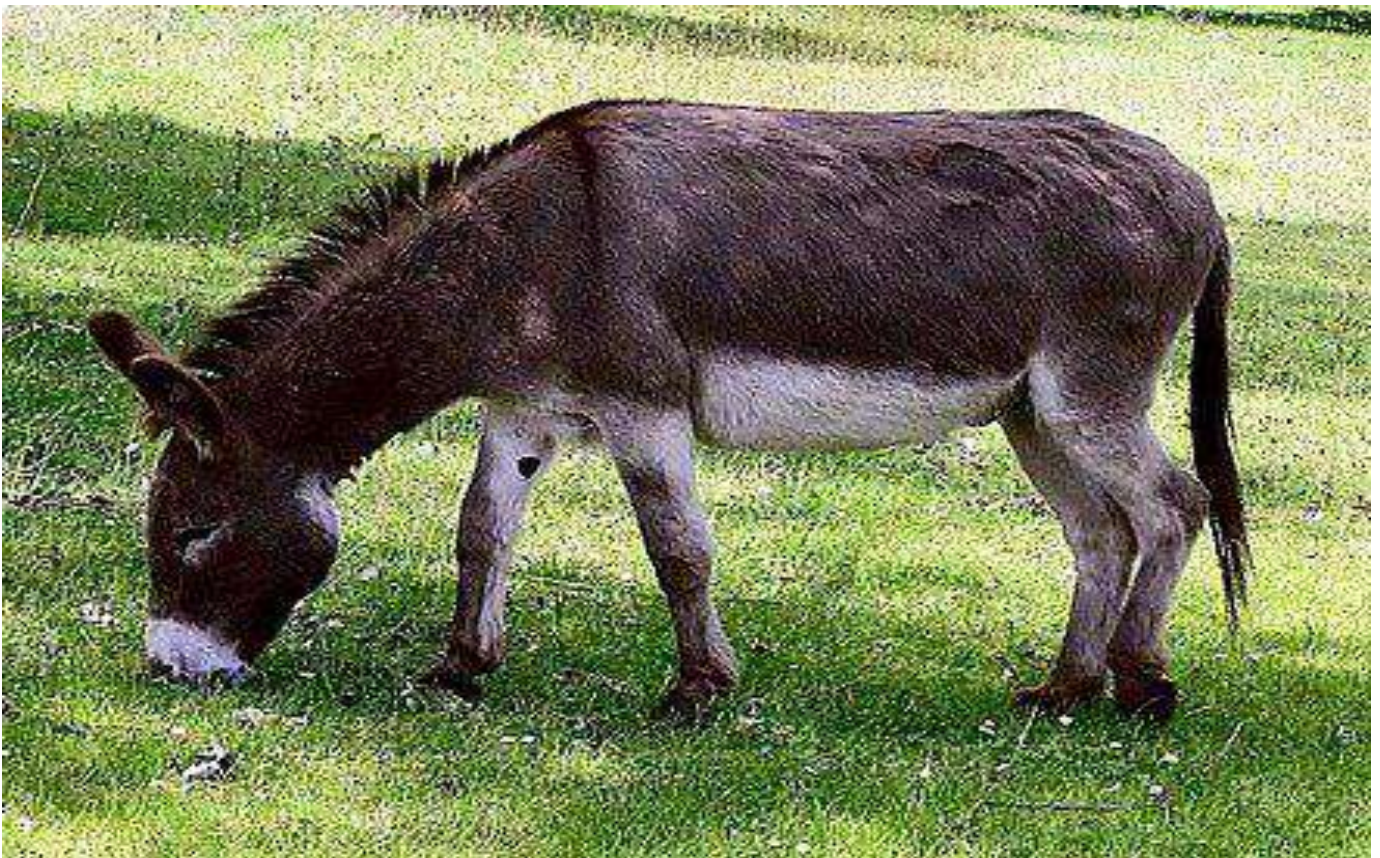
Medium-sized, domesticated mammal.

Coat can vary in color but is often gray or brown.

Long ears and a short mane.

Adapted for carrying loads and working in arid regions.

Herbivorous, grazing primarily on grass



Kingdom: Animalia

Phylum: Chordata

Class: Mammalia

Order: Carnivora

Family: Felidae

Genus: Panthera

Species: leo

***Panthera leo* (Lion)**

Characteristics:

Large, muscular body with a golden-yellow coat.

Males have a distinctive mane.

Carnivorous, hunting in groups (prides).

Known as the "king of the jungle."

Native to savannas and grasslands in Africa and India.



Kingdom: Animalia

Phylum: Chordata

Class: Mammalia

Order: Artiodactyla

Family: Suidae

Genus: Sus

Species: scrofa

***Sus scrofa* (Wild Boar / Domestic Pig)**

Characteristics:

Medium-sized omnivores with a stout body.

Coarse, bristly coat, often gray or brown.

Adapted for digging with a strong snout.

Found in forests, grasslands, and farmlands.

Domesticated forms used for agriculture.



Kingdom: Animalia

Phylum: Chordata

Class: Mammalia

Order: Artiodactyla

Family: Bovidae

Genus: Capra

Species: hircus

***Capra hircus* (Domestic Goat)**

Characteristics:

Medium-sized domesticated herbivore.

Short fur, variable in color and pattern.

Both sexes may have curved horns.

Adapted for grazing and climbing rocky terrain.

Provides milk, meat, and fiber.



Kingdom: Animalia

Phylum: Chordata

Class: Mammalia

Order: Carnivora

Family: Canidae

Genus: Canis

Species: familiaris

***Canis familiaris* (Domestic Dog)**

Characteristics:

Highly diverse in size, color, and coat.

Domesticated for companionship, hunting, and guarding.

Keen sense of smell and hearing.

Social and highly trainable.

Carnivorous or omnivorous diet.



Kingdom: Animalia

Phylum: Chordata

Class: Mammalia

Order: Rodentia

Family: Dipodidae

Genus: Jaculus

Species: Jaculus orientalis

Jaculus orientalis

Characteristics:

Jaculus orientalis has long, powerful hind legs adapted for leaping, a long, tufted tail for balance, and small forelimbs. Its fur is typically sandy

or light brown, providing camouflage in its arid desert habitat. It has large eyes adapted for nocturnal activity.



Kingdom: Animalia

Phylum: Chordata

Class: Mammalia

Order: Carnivora

Family: Mustelidae

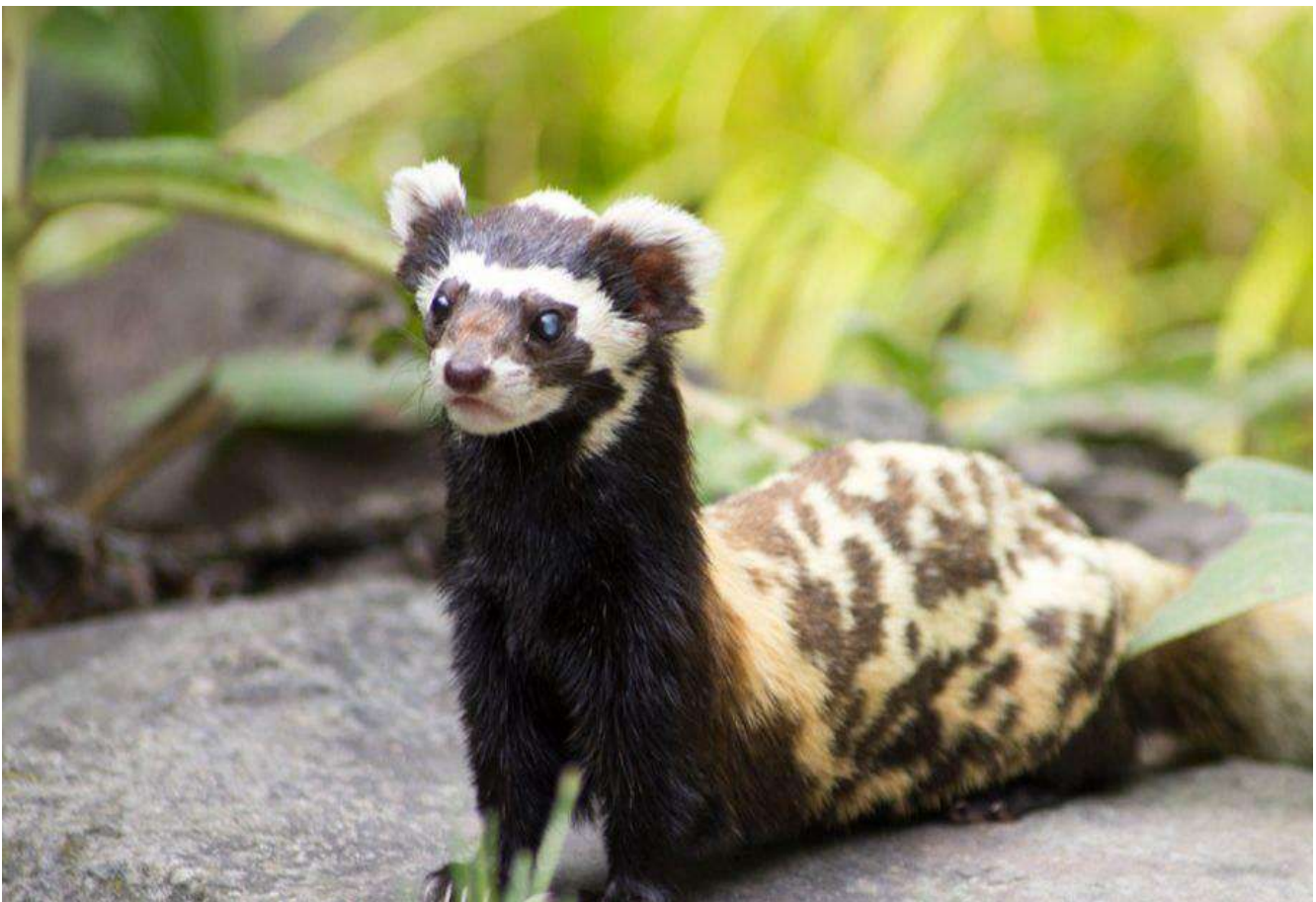
Genus: Vormela

Species: Vormela peregusna

Vormela peregusna

Characteristics:

Vormela peregusna has a sleek, slender body with a dark brown or blackish fur, with lighter markings on the throat and chest. It has a bushy tail and sharp claws, typical of carnivorous mammals. It is known for its agility and is a skilled predator in forested and mountainous areas.



Kingdom: Animalia
Phylum: Chordata
Class: Mammalia
Order: Lagomorpha
Family: Leporidae
Genus: Lepus
Species: Lepus capensis
Lepus capensis

Characteristics:

Lepus capensis has a robust body with long ears, a short tail, and powerful

hind legs adapted for fast running. Its fur is typically light brown or greyish, providing camouflage in its natural grassland and desert habitats. It has large, strong hind legs for quick, long leaps to escape predators.



Kingdom: Animalia

Phylum: Chordata

Class: Mammalia

Order: Artiodactyla

Family: Bovidae

Genus: Capra

Species: Capra hircus

Capra hircus

Characteristics:

Capra hircus has a robust body with a short coat that can vary in color.

Both males and females typically have horns, though in some breeds, females may lack them.

Goats have a distinctive beard, especially in males, and cloven hooves. They are known for their agility, curiosity, and ability to adapt to various environments.



Kingdom: Animalia

Phylum: Chordata

Class: Mammalia

Order: Rodentia

Family: Caviidae

Genus: Cavia

Species: Cavia porcellus

Cavia porcellus

Characteristics:

Morphological Traits: *Cavia porcellus* has a compact, stocky body with short limbs, a small head, and no tail.

Its fur can come in a variety of colors and textures, ranging from short-haired to long-haired varieties.

Guinea pigs are known for their social behavior and vocalizations.



Domain: Eukaryota

Kingdom: Animalia

Phylum: Chordata

Class: Mammalia

Order: Rodentia

Family: Muridae

Genus: Dipodillus

Species: D. simoni

Dipodillus simoni

Characteristics:

It is a small rodent

The dorsal fur is usually soft and sandy-colored or light brown

The tail is slender, covered with fine hair, and may have a slight tuft at the end.

It has relatively large ears and eyes .



Domain: Eukaryota
Kingdom: Animalia
Phylum: Chordata
Class: Mammalia
Order: Rodentia
Family: Muridae
Genus: Dipodillus
Species: D. campestris
Dipodillus campestris

Characteristics:

Small-bodied

The dorsal fur is soft and ranges from sandy to pale gray, providing excellent camouflage in desert environments.

The ventral side is white or cream-colored.

The tail is slender, covered in fine hair, and ends with a small tuft of darker fur at the tip.

Large ears and eyes are well-adapted for nocturnal activity.



Domain: Eukaryota
Kingdom: Animalia
Phylum: Chordata
Class: Mammalia
Order: Rodentia
Family: Spalacidae
Genus: Nannospalax
Species: N. leucodon
Nannospalax leucodon

Characteristics:

commonly known as the lesser blind mole-rat

Medium-sized rodent

Dense, velvety fur that varies in color from gray to brown or yellowish-brown

Eyes are rudimentary, often covered by skin, as the species has poor vision adapted for its underground habitat.

External ears are absent

Teeth: Prominent, ever-growing incisors used for digging.



Domain: Eukaryota
Kingdom: Animalia
Phylum: Chordata
Class: Mammalia
Order: Rodentia
Family: Muridae
Genus: Acomys
Species: A. cahirinus
Acomys cahirinus

Characteristics:

Small rodent

Dorsal fur is spiny and stiff

Ventral fur is softer and pale

The tail is covered in fine hair and can detach easily if grabbed

Large ears and prominent, dark eyes are adaptations for nocturnal activity.



Domain: Eukaryota
Kingdom: Animalia
Phylum: Chordata
Class: Mammalia
Order: Rodentia
Family: Muridae
Genus: Gerbillus
Species: G. pyramidum
Gerbillus pyramidum

Characteristics:

Small-bodied

The dorsal fur is soft and sandy-colored, ranging from pale beige to reddish-brown, providing effective camouflage in desert habitats. The ventral side is white or cream-colored

Tail: Slender and covered in fine hair with a distinct dark tuft at the tip. Large ears help detect sounds, and large eyes are adapted for nocturnal vision



Domain:Eukaryota

Kingdom:Animalia

Phylum:Chordata

Class:Mammalia

Order:Carnivora

Family:Canidae

Genus:Vulpes

Vulpes vulpes

Characteristics:

Body Shape: Slender and agile, with a streamlined body adapted for speed and stealth. **Fur Color:** Typically reddish-orange on the back, sides, and head, with a white underside. **Ears:** Large and triangular. **Tail (Bushy Tail):** Long, bushy, and covered with thick fur, often tipped with white. The tail helps with balance and communication. **Muzzle:** Pointed muzzle with a black nose, giving them a characteristic sharp-faced appearance. **Eyes:** Large, almond-shaped eyes with vertical pupils, typically golden or amber in color, adapted for excellent night vision. **Legs:** Long, slender legs with small paws, suited for running and pouncing on prey. **Feet:** Padded feet with semi-retractable claws for traction and digging.



Kingdom: Animalia

Phylum: Chordata

Class: Mammalia

Order: Eulipotyphla

Family: Erinaceidae

Genus: Hemiechinus

Species: Hemiechinus aethiopicus

Erinaceus sinaicus (Hemiechinus aethiopicus)

Characteristics:

Body Shape: Small and round with a compact build, adapted for burrowing and defensive rolling. **Spines:** The back is covered with short, sharp spines that provide protection from predators. These spines are typically beige or brown with darker tips. **Fur:** The underside (belly) and face are covered with soft fur, usually white or pale brown. **Face:** The face is pointed, with a small, black nose at the tip of the snout. **Ears:** Relatively large and rounded ears, which help with thermoregulation and detecting sounds. **Eyes:** Small, dark, and beady eyes, adapted for nocturnal vision. **Legs:** Short, sturdy legs with clawed feet for digging. **Tail:** A very short and almost inconspicuous tail.



Domain:Eukaryota
Kingdom:Animalia
Phylum:Chordata
Class:Mammalia
Order:Rodentia
Family:Muridae
Genus:Acomys
Species:A. russatus
Acomys russatus

Characteres :

Size: Small

Fur: Golden or reddish-brown spiny fur on the back and softer, lighter fur on the underside.

Ears: Large and rounded.Tail: Long, thin, and often scaly

Eyes: Large and dark, adapted for nocturnal activity.

Feet: Small, with sharp claws for climbing rocky terrain



Domain:Eukaryota

Kingdom:Animalia

Phylum:Chordata

Class:Mammalia

Order:Rodentia

Family:Muridae

Genus:Rattus

Species:R. rattus

Rattus rattus

Characteres:

Size: Medium-sized

Fur: Smooth, dark brown to black fur on the back and lighter fur on the belly.

Ears: Large, rounded, and thin, often extending past the eyes when pulled forward.

Tail: Long, thin, and scaly, usually black or dark brown.

Eyes: Large and prominent, indicating nocturnal behavior.

Feet: Small, with sharp claws for climbing and gripping surfaces.



Domain:Eukaryota
Kingdom:Animalia
Phylum:Chordata
Class:Mammalia
Order:Rodentia
Family:Muridae
Genus:Rattus
Species:R. norvegicus
Rattus norvegicus

Characteres:

Size: Large

Fur: brown or grayish

Ears: Small and rounded, covered with fine hair.

Tail: Thick, scaly, and slightly shorter than the body.

Eyes: Medium-sized and dark, suited for nocturnal activity.

Feet: Strong, with sharp claws adapted for digging and climbing.



Domain:Eukaryota
Kingdom:Animalia
Phylum:Chordata
Class:Mammalia
Order:Rodentia
Family:Muridae
Genus:Arvicanthis
Species:A. niloticus
Arvicanthis niloticus

Characteres:

Size: Medium-sized.

Fur: Coarse fur, usually brown or grayish-brown

Ears: Small and rounded, with sparse hair.

Tail: Thin, scaly, and covered with short hair

Eyes: Medium-sized, dark, and well-adapted for diurnal activity.

Feet: Slim, with sharp claws for climbing and foraging.



Domain:Eukaryota
Kingdom:Animalia
Phylum:Chordata
Class:Mammalia
Order:Rodentia
Family:Muridae
Genus:Psammomys
Species:P. obesus
Psammomys obesus

Characteres:

Size: Medium-sized.

Fur: Soft, sandy-brown to grayish Fur

Ears: Small and rounded, blending with the fur.

Tail: Long and slender, covered with short hair and often dark-tipped.

Eyes: Large and dark, adapted for desert environments.

Feet: Strong and broad, with short claws for digging in sandy soil.



Domain:Eukaryota
Kingdom:Animalia
Phylum:Chordata
Class:Mammalia
Order:Eulipotyphla
Family:Erinaceidae
Genus:Paraechinus
Species:P. aethiopicus
Paraechinus aethiopicus

Characteres:

Size: Small to medium-sized

Fur: Spiny, with a mix of stiff, sharp quills on the back and soft fur on the underside. The quills are usually light brown or tan with dark tips.

Ears: Small, rounded, and located near the top of the head.

Tail: Short and stubby.

Eyes: Small, dark, and adapted for nocturnal activity.

Feet: Small and strong, with claws suited for digging.



Domain: Eukaryota

Kingdom: Animalia

Phylum: Chordata

Class: Mammalia

Order: Carnivora

Family: Felidae

Genus: Felis

Species: F. chaus

Felis chaus

Characterers :

Size: Medium-sized **Coat:** Short, dense, and varies in color from sandy yellow to reddish-gray, sometimes with faint stripes.

Ears: Pointed with black tufts on the tips. **Eyes:** Large, yellowish-green with a striking appearance. **Legs:** Long and slender with a powerful build. **Tail:** Thick at the base and tapering, with a few dark rings



Domain: Eukaryota
Kingdom: Animalia
Phylum: Chordata
Class: Mammalia
Order: Carnivora
Family: Felidae
Genus: Felis
Species: F. margarita
Felis margarita

Characterers :

Size: Small, with a body length of 39–52 cm

Coat: Pale sandy to light gray, soft and dense, with faint stripes on the legs and tail. **Ears:** Large, wide, and set low, helping in hearing and staying cool. **Eyes:** Big, amber-colored, and well-adapted for night vision. **Legs:** Short with furry pads to walk on hot sand.

Tail: Fluffy, with dark rings and a black tip.



Kingdom: Animalia

Phylum: Chordata

Class: Mammalia

Order: Carnivora

Family: Canidae

Genus: Canis

Species: Canis aureus

Canis aureus

Characteristics:

1. **Size and Body:** Medium-sized with a slender and muscular body. Body length ranges from 60-90 cm, with a tail length of 20-30 cm.
2. **Fur:** Golden to brown or grayish in color. Medium-density fur, adapted to desert climates.
3. **Tail:** Relatively long with a black tip.
4. **Ears:** Long and pointed ears, aiding in heat dissipation.
5. **Face and Snout:** Pointed snout, Small brown eyes, reflecting intelligence and alertness.
6. **Limbs:** Long, slender legs designed for running fast over long distances.



Kingdom: Animalia

Phylum: Chordata

Class: Mammalia

Order: Primates

Family: Cercopithecidae

Genus: Papio

Species: Papio hamadryas

Papio hamadryas

Characteristics: (commonly known as the hamadryas baboon)

Size: Males: 60-80 cm, 20-30 kg; Females: 40-60 cm, 10-15 kg.

Fur: Males have silver-grey fur, females are brownish-grey.

Face: Bare reddish-pink skin, with a prominent muzzle in males.

Tail: 40-60 cm, long and slightly curved. **Social Structure:** Live in hierarchical harems, forming larger troops. **Diet:** Omnivorous – eats grasses, fruits, roots, and insects. **Habitat:** Semi-arid regions, savannas, and rocky areas in Northeastern Africa & Arabian Peninsula



Domain:Eukaryota

Kingdom:Animalia

Phylum:Chordata

Class:Mammalia

Order:Rodentia

Family:Sciuridae

Genus:Sciurus

Species:S. vulgaris

Sciurus vulgaris

Characteristics:

Long tail aids in balance, steering, and warmth.

Coat color varies seasonally and geographically (black to red).

White-cream underside is constant.

Sheds coat twice yearly, with larger ear tufts in winter.

Smaller and redder than the eastern grey squirrel.

Diet: Nuts, seeds, fungi, berries, and sometimes bird eggs.

Excellent climbers and jumpers, rarely descending to the ground.



Domain:Eukaryota
Kingdom:Animalia
Phylum:Chordata
Class:Mammalia
Order:Artiodactyla
Family:Bovidae
Subfamily:Antilopina
Genus:Gazella
Species:G. dorcas
Gazella dorcas

Characteristics:Dorcas Gazelle (*Gazella dorcas*)

Coat: Sandy to reddish-brown with a white underside and a darker stripe along the sides.

Diet: Leaves, grasses, flowers, fruits, and acacia pods.

Body: Slender and graceful, with long legs adapted for speed and agility
Face: White facial markings with a dark stripe running from the eyes to the nose.
Horns: Both males and females have slender, S-shaped horns with distinct rings; males' horns are longer and more curved.
Ears: Large and pointed, aiding in detecting predators.
Tail: Short (15–20 cm) and darker at the tip.



Domain:Eukaryota
Kingdom:Animalia
Phylum:Chordata
Class:Mammalia
Order:Lagomorpha
Family:Leporidae
Genus:Lepus
Species:L. capensis
Lepus capensis

Characteristics:Cape Hare (*Lepus capensis*)

Body: Slender and agile, built for speed and endurance.

Fur: Sandy-brown to grayish-brown, blending with arid environments. **Ears:** Long and thin (up to 10 cm or more), often with a dark tip, aiding in heat dissipation. **Eyes:** Large and prominent, providing a wide field of vision.

Tail: Short, with a dark upper side and white underside.

Legs: Long and powerful hind legs, adapted for fast running and high jumping



Domain:Eukaryota

Kingdom:Animalia

Phylum:Chordata

Class:Mammalia

Order:Artiodactyla

Family:Bovidae

Genus:Capra

Species:C. hircus

Capra hircus

Characteristics:Domestic Goat (*Capra hircus*)

Body: Medium-sized, sturdy, and well-muscled.

Fur: Can be short or long, colors (white, black, brown, or mixed patterns). **Horns:** Present in both sexes (though some breeds are polled); curved or spiraled and vary in size.

Ears: Can be upright, floppy, or semi-drooping, depending on the breed. **Eyes:** Horizontal, rectangular pupils for wide peripheral vision. **Beard:** Males (and some females) have a beard under the chin. **Tail:** Short and slightly curved upward.



Domain:Eukaryota

Kingdom:Animalia

Phylum:Chordata

Class:Mammalia

Order:Carnivora

Family:Mustelidae

Genus:Vormela

Vormela peregusna

Characteristics: Marbled Polecat (*Vormela peregusna*)

Body: Slender, elongated, and flexible, adapted for burrowing and hunting in tight spaces.

Fur: Distinctive marbled pattern with yellowish-brown, black, and white patches. **Head:** White face with a dark mask around the eyes and a white forehead.

Ears: Small, rounded, and covered in short fur.

Tail: Bushy and long, often with a dark tip.

Legs: Short but strong, with sharp claws adapted for digging.



Domain:Eukaryota

Kingdom:Animalia

Phylum:Chordata

Class:Mammalia

Order:Carnivora

Family:Canidae

Genus:Canis

Species:C. lupus

Canis lupus

Characteristics:

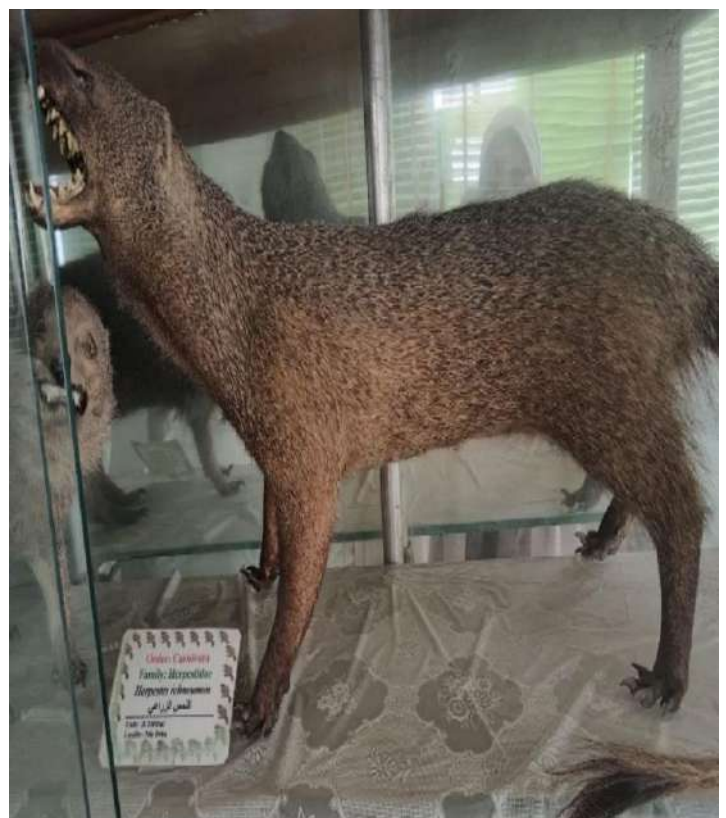
Body Size: Medium to large-sized canid, with a body length of 105–160 cm (41–63 in) and a tail length of 30–50 cm (12–20 in). **Fur:** Dense and thick fur, varying in color from gray, white, black, brown, or a mix of these colors. **Head:** Broad and strong skull with a long, pointed snout. **Eyes:** Almond-shaped eyes, usually yellow or amber in color. **Ears:** Triangular, erect ears that are proportionally small compared to the head. **Legs:** Long and powerful legs adapted for endurance running. **Tail:** Bushy tail often carried low and straight. **Paws:** Large paws with webbing between toes, aiding in movement *over snow*.



Domain: Eukaryota
Kingdom: Animalia
Phylum: Chordata
Class: Mammalia
Order: Carnivora
Family: Herpestidae
Genus: Herpestes
Species: H. ichneumon
Herpestes ichneumon

Characteristics:

Body Size: Medium-sized mammal with a body length of 48–60 cm (19–24 in) and a tail length of 33–54 cm (13–21 in). **Fur:** Coarse and shaggy fur, typically grayish-brown with a speckled appearance due to a mix of light and dark hairs. **Head:** Elongated head with a pointed snout. **Eyes:** Small, round, and reddish or brown in color. **Ears:** Small, rounded ears positioned on the sides of the head. **Legs:** Short but sturdy legs, adapted for running and digging. **Tail:** Long and bushy, often with a black tip. **Paws:** Equipped with sharp, non-retractable claws used for digging and hunting.



Domain: Eukaryota
Kingdom: Animalia
Phylum: Chordata
Class: Mammalia
Order: Carnivora
Family: Canidae
Genus: Canis
Species: C. familiaris
Canis familiaris

Characteristics:

Body Size: Highly variable, ranging from small (like Chihuahuas) to large (like Great Danes), with body lengths typically between 20–110 cm (8–43 in). **Fur:** Can be short, medium, or long, with a wide range of colors and patterns, including solid, spotted, or brindled. **Head:** Shape varies by breed, from broad and flat (e.g., Bulldogs) to long and narrow (e.g., Greyhounds). **Eyes:** Round or almond-shaped, with colors including brown, blue, amber, or mixed. **Ears:** Can be erect, floppy, or semi-erect, depending on the breed. **Legs:** Vary in length and strength depending on the breed, adapted for running, digging, or working. **Tail:** Comes in different shapes—curled, straight, or bushy—depending on the breed.



Domain:Eukaryota
Kingdom:Animalia
Phylum:Chordata
Class:Mammalia
Order:Carnivora
Suborder:Feliformia
Family:Felidae
Subfamily:Felinae
Genus:Felis
Species:*F. catus*
Felis catus

Characteristics:

Body Size: Small to medium-sized mammal, with a body length of 23–46 cm (9–18 in) and a tail length of 20–35 cm (8–14 in).**Fur:** Soft and dense fur, varying in length (short, medium, or long) and available in a wide range of colors and patterns (solid, tabby, spotted, bicolor, etc.). **Head:** Rounded or slightly triangular head with a short to medium-length snout.**Eyes:** Large, round, or almond-shaped eyes with colors including green, blue, yellow, or mixed shades.**Ears:** Pointed, erect, and often covered with fine fur; some breeds have tufts at the tips.



Domain:Eukaryota

Kingdom:Animalia

Phylum:Chordata

Class:Mammalia

Order:Carnivora

Family:Felidae

Genus:Felis

Species:F. silvestris

Felis silvestris

Characteristics:

Body Size: Medium-sized feline, with a body length of 45–80 cm (18–31 in) and a tail length of 21–40 cm (8–16 in). **Fur:** Thick, dense fur with a grayish-brown base color, often featuring dark stripes or spots, helping with camouflage. **Head:** Broad and rounded head with a short snout. **Eyes:** Large, round, or almond-shaped, typically yellow or green in color. **Ears:** Medium-sized, rounded, and covered with short fur, often positioned slightly outward. **Legs:** Strong and well-muscled, adapted for stalking and pouncing. **Tail:** Thick and bushy with distinct dark rings and a black tip. **Paws:** Equipped with soft pads and retractable claws, ideal for silent movement and hunting.



References

**The references of the
classification of
specimens**

Phylum Chordata Prepared by

- *Alaa Abdelhafez Hassan.* *120210053*
- *Amira Ali Mahmoud okasha.* *120210066*
- *Gehad Mohammed Abbas.* *120210107*
- *Habiba Ahmed Mohammedin.* *120210117*
- *Hasnaa Ali Ahmed.* *120210126*
- *Zahraa Ali Abdelkader.* *120210166*
- *Fatma Ibrahim Mohamed.* *120210267*
- *Nourhan Ahmed Mohamed.* *120210447*

Under Supervision of

Dr. Fatma Abdel regal Mahmoud

Invertebrates

1-Dr.; Peter Vine 1986 Red Sea Invertebrates.

Vertebrates

Amphibia

1-H.S.Bhamrah 1994 An Introduction To AMPHIBIA.

2-Mostafa A. Saleh 1997 Amphibians And Reptiles Of EGYPT.

Reptiles

1-Mostafa A. Saleh 1997 Amphibians And Reptiles Of EGYPT.

2-H.S.Bhamrah 1994 An Introduction To Reptiles.

Birds

1-Moahmoud E. Tharwat 1997 Birds Known to occur in EGYPT.

2- Hermann Heinzel 1972 THE BIRDS OF BRITAIN AND EUROPE WITH NORTH AFRICA AND THE MIDDLE EAST.

MAMMALS

1-H. S. Bhamrah 1994 AN INTRODUCTION TO MAMMALS.

2-Leif Lyneborg 1971 Blandford colour series Mammals in Colour.

3-Luigi Boitani 1983 the macdonald encyclopedia of Mammals.

4-Hans Hvass 1956 Mammals of the World.

5-

اللواء عبدالله النجومى 1952 الثدييات المصريه

Fishes

1- Casa Edtrice Bonechi, THE RED SEA.

2-Farid S. Atiya 1990 The Red Sea in Egypt (part 1)

3-Dr John E. Randall 1992 Red Sea Reef Fishes

The Web References

Phylum: Porifera

www.horta.uac.pt

www.cg66.fr

www.dafni.com

Phylum: Cnidaria

www.animaldiversity.ummz.umich.edu

www.docs.lib.noaa.gov

www.biologie.uni.hamburg.de

www.aquatechonline.net

www.advancedaquarist.com

www.sandtech.nic.in

www.anth.ucsb.edu

www.altas.drpez.org

www.cites.org

www.recif-france.fr

Phylum: Platyhelminthes

www.telmed.org
www.atlas.or.kr
www.unine.ch
www.med-chem.com
www.wadsworth.org

Phylum: Annelida

www.uco-bn.fr
www.animaldiversity.umich.edu
www.rydberg.biology.colostate.ed
www.sulinet.hu
www.animalia.org.or
www.seasky.org

Phylum: Arthropoda

www.ciesm.org
www.poppe_images.com
www.fimr.fi
www.subaqua.web.cern.ch
www.fao.org
www.daisie.se
www.mlssa.asn.an
www.egyptnaturalheritage.com
www.edg-of-reef.com
www.liveaquaria.com
www.marine.gov/tetraclita.htm

Class: Insecta

www.oxygastra.org
www.seastar.cocolog.nifty.com
www.naba.org
www.nitro_biosci-arizona.edu
www.padil.gov.au
www.entomology.blogfa.com
www.radar-uk-co.uk
www.insectariumvirtual.com
www.godofinsects.com
www.insektenfotos.de
www.pansphoto.com
www.clande.schott.free.fr
www.krungkuene.org
www.de.wikipedia.org
www.aramel.free.fr

Phylum: Mollusca

www.manand_mollusca.net
www.paginas.fe.up.pt
www.photomazza.com
www.mural.uv.es
www.catalog.ndap.org
www.vieocane.free.fr
www.trockenaquaristik.de
www.gastropods.com
www.shells.tricity.wsu.edu

Phylum: Echinodermata

www.calaademy.org

www.withmysite.com

www.flmnh.ulf.edu

www.fischbestimmung.de

www.vum.ac.nz

www.beritaptek.com

www.petsforum.com

www.edge-of-roof.com

www.coralreefnetwork.com

www.wwwz.hawaii.eu

www.hawaii.edu

The River Nile Fishes & Marine

www.maestropescador.com

www.worldexplorer.be/goundharder.htm

www.sportspot.it/fishesMuG1101.htm

www.linnaeus.nrm.se

www.aquazoo.no/shop/images

www.nps.gov

www.scuba.terong.com

www.silvers.org

www.ciem.org

www.fishpix-kahaku.go.jp

Class:Amphibia

www.paru.cas.cs

www.batraciens-reptiles.com

www.socrates.berkeley

www.gallery.pethobbyist.com

www.pollywog.co.uk

www.amphibianinfo.com

www.faunatar.fi

www.mariacreptiles

Class: Reptiles

www.meb.uni-bonn.de

www.viperiden.ch

www.repti.net

www.thefarm.org

www.arcav.com

www.markm/ucas.com

www.villareptilia.de

www.answers.com

www.en.arocha.org

www.wikipedia.org

www.sci.ege.edu.tr

www.homepage.mac.com

Class: Aves

www.hlasek.com

www.biologie.uni-hamburg.de

www.behav.org

www.birding.in

www.ittio.fauna.org

www.pbase.com

www.oiseaux.net

www.povodok.ru

www.home.tiseali.nl

www.home.cfl.rr.com

www.ivnvechtplassen.org

www.baden-wuerttemberg.nabu.de

Class: Mammalia

www.geres-asso.org

www.zza-online.de

www.rodent-info.net

www.canids.org

www.zoologi.no

www.iucn.org

www.lioncrusher.com

www.scienza-salento.unile.it

www.allposters.com

www.content.ndap.org

www.exotisch-nager.de

www.krugerzcanyons.com

اشراف

رئيس قسم علم الحيوان والحشرات:

أ.د/ منى محمد عطية

