

Assiut University  
Faculty of Science

Zoology Department

Time: two hours

Second term Final Exam 2018/1019

Course title: healthy feeding. (URO13)

---

Q1- Answer by  $\checkmark$  or X for these sentences: (20 marks, one mark each)

- 1-Severe calorie restriction reduces basal metabolic rate . . . . ( )
- 2-The food pyramid contains the five main food groups that each person can replace only one of them. .... ( )
- 3-Ghrelin increases food intake: Ghrelin plays an important role in feeling of hunger, food intake and therefore weight gain decreased. .... ( )
- 4-Pernicious anemia is inherited anemia and its symptoms includes anorexia, loss of weight, dyspepsia, nausea, vomiting, diarrhea and the tongue become beefy. .... ( )
- 5-Ghrelin Modulate inflammatory response ..... ( )
- 6-The lack of RBCs is the only cause of anemia. .... ( )
- 7-Exposure to toxins, such as pesticides, arsenic, and benzene may lead to aplastic anemia and atrophy of bone marrow this leads to failure in production of RBCs. .... ( )
- 8- Hereditary Spherocytosis , Target cell anemia, megaloblastic anemia and Sick cell anemia are examples of hemolytic anemia . .... ( )
- 9-Obesity in children is more dangerous illness than in adult. .... ( )
- 10-Bleeding from peptic ulcer, esophageal varices and from piles can cause pernicious anemia ..... ( )
- 11- Vitamin E participates in epithelial glycoprotein synthesis and this protects the mucosa of urogenital tract, respiratory tract, gastrointestinal tract, the cornea and the skin. .... ( )
- 12-Target cell anemia is not Genetic disease and arise as a result of diminished or absent production of one or more globin chains. .... ( )
- 13-The deficient of G6PDH in RBCs make the cell less able to produce enough NADPH necessary for regeneration of glutathione through pentose shunt pathway. .... ( )
- 14-Vitamin k leads to Prolonged clotting time. .... ( )
- 15-The daily intake of iron is about 10 mg of which 1.5 mg is absorbed and the rest pass in the stools. .... ( )
- 16-Leptin informs the hypothalamus about the extent of fat stores and leptin blood level proportionate with fat store. .... ( )
- 17-Vitamin D deficiency cause osteomalacia in adults softening of skeleton due to demineralization. .... ( )

- 18-liver cirrhosis can cause megaloblastic anemia. .... ( )  
19-Ghrelin hormone stimulate insulin secretion. .... ( )  
20- Body mass index equation can evaluate the risk of obesity in human. .... .( )

**Q2- Answer Five questions only: (30 marks: 6 marks each)**

- 1-What are the physiological effects of leptin? 6 items
- 2-What are the biological functions of dietary lipids? 6 items
- 3-Briefly explain the types of dietary fibers? And mention the functions of dietary fibers in the intestine? 6 items
- 4-What are the Advantages of additives? 6 items
- 5-Compare between the types of flavoring agents?
- 6-Identify anemia? and What are the causes of megaloblastic anemia? 5 items
- 7-What are the causes or types of browning fruits and vegetables? and how can protect them by antibrowning agents?

-----  
With my best wishes and great success,

Professor Dr. Mohamed Bassam Al-Salahy



جامعة  
البيروت

(Page Two)

5) Based on information in the passage, which animal would you be most likely to see at the beach?

A. crabs

B. seagulls

C. starfish

6) Based on information in the passage, we can understand that .....

A. the beach is not as nice as the mountains

B. the beach is a good place to vacation

C. many animals live at the beach

III- Choose the correct answer:

(20 Marks)

1- You must be there early in the morning, or you will lose the job to someone else.

This is a **(simple – compound – complex)** sentence.

2- While we waited at the train station, Joe realized that the train was late. This is a **(simple – compound – complex)** sentence.

3- Mary and Samantha took the bus. This is a **(simple – compound – complex)** sentence.

4-Neither she nor I **(are – am – is)** going to the festival.

5- Each of the teachers **(is – are – am)** going to leave the school.

6-He is one of the men who **(does – do – doing)** the work.

7- Give it to **(whom – whoever – whomever)** asks for it first.

8- She spoke **(quickly – more quickly – quicker)** than he did.

9- The team are putting on **(their – its – there)** coats.

10- Cut it **(up – in – into)** small pieces.

IV- Translate the following into Arabic:

(6 Marks)

Cutting off trees in cities is an ill deed. Trees give us shade in summer and the green colour makes us feel at ease. Trees also purify the air and they give off oxygen by day. That's why we should do our best to spread the green colour all over our country.

---

(Best Wishes)

Main Examiner:

Dr. Marwa M. AbdelMotaleb



Assiut University  
Faculty of Science  
First Semester Final Examination  
(13 June 2019)



Subject: English Language II  
Students: Level One

Code: 020UR  
Time Allowed: 2 hours

**I- Indicate the number of morphemes in each of the following words: (10 Marks)**

1. inescapable
2. horses
3. cats
4. unlikely
5. carrot

**II- Read the following passage, and then answer the questions below: (12 Marks)**

Although great natural barriers hindered east-west development in Canada, this circumstance was mitigated by the mighty river and lake systems that provided avenues for the fur trader, missionary, soldier, and settler. Canada's rivers and lakes allowed and, indeed, invited venturesome pioneers to explore the interior of the continent and in spite of natural barriers, to tap its great wealth. The rivers and lakes were essential to the great fur empire; people in canoes brought furs from the farthest **extremity** of the Canadian Shield to Montreal for exportation to Europe. The first settlements spread along the rivers, since only the rivers provided transportation and communication. Militarily, rivers and lakes were of prime importance; whoever controlled the St. Lawrence and its entrance also controlled Canada.

**1. What is the main subject of the passage?**

- (A) The role of rivers and lakes in Canadian development
- (B) The barriers to east-west communication in Canada
- (C) The adventures of Canadian settlers
- (D) The development of the Canadian fur empire

**2. Which would be an example of the type of barrier the author refers to in line 1?**

- (A) A military fort
- (B) A mountain range
- (C) A political border
- (D) An ancient feud

**3. According to the passage, rivers and lakes were important in the fur trade as.....**

- (A) transportation routes
- (B) habitats for fur-bearing animals
- (C) sources of water
- (D) natural fortifications

**4. In line 5, the word "extremity" means.....**

- (A) a limb of the body
- (B) the most distant part
- (C) a severe measure
- (D) the greatest degree

(Please go to the back of this sheet)



(Page Two)

5. According to the passage, what pattern of expansion did the first settlements follow?

- (A) They followed the course of the rivers.
- (B) They moved directly from east to west.
- (C) They advanced along the Canadian Shield.
- (D) They spread around the perimeter of lakes.

6. The author uses the example of the St. Lawrence mainly to illustrate the role of rivers and lakes in...

- (A) urban settlement
- (B) military control
- (C) economic development
- (D) agricultural research

III- Match each word from column (A) with its word formation process in column (B): (12 Marks)

(A)	(B)
1. UNESCO	a) Fore clipping
2. bizarre	b) Compounding
3. gator	c) Initialism
4. smog	d) Blending
5. YMCA	e) Borrowing
6. blueberry	f) Acronym

IV- Read the following sentences and choose the best definition for the italicized word by searching for context clues in the sentence: (10 Marks)

1. The Montforts have decided to take a cruise, so they went to the travel agency for some *brochures*.

- a. pamphlets
- b. price list
- c. inquisition
- d. questions

2. Marsha found it difficult to *cope with* the loss of her job.

- a. anticipate
- b. deal with
- c. think about
- d. confirm

3. The attorney wanted to *expedite* the process because her client was becoming impatient.

- a. accelerate
- b. evaluate
- c. reverse
- d. justify

4. The new shipping and receiving building is an *expansive* facility, large enough to meet our growing needs.

- a. obsolete
- b. spacious
- c. meager
- d. costly

5. The asphalt at La Brea seeps to the surface, especially in the summer, and forms shallow puddles that would often have been *concealed* by leaves and dust.

- a. covered
- b. highlighted
- c. transformed
- d. contaminated

V) Write the antonym of the following words, by adding the proper prefix:

active – responsible – happy

(6 Marks)

(Best Wishes)

Main Examiner:

Dr. Marwa M. AbdelMotalb

**Exam: Quality Assurance**

**May 2019**



**Course code: o2o U R**

**Duration: 2 hours**

**Faculty of Science**

**One page**

---

**Answer the following questions:**

**Question One: Define the following managerial concepts: (20 marks)**

1. Quality.
2. Total quality management.

**Question Two: Write short notes on the following topics (20 marks)**

1. What senior managers need to know about TQM?
2. What senior managers need to do about TQM?

**Question Three: (10 marks)**

1. What are the eight management principles of total quality management?

**End of Questions**

*Good Luck*

Dr. Mostafa Abdelmotaleb

Dr. Ziad Hasan



Assiut University  
Faculty of Science  
Zoology Department



Second Semester/ General Zoology  
Exam /June/2019



Time: 2 hour  
Level: First  
Course Code: 100Z

**Answer the following questions (50 marks)**

**First question: Choose the best single correct answer (10 marks)**

- The.....produces melatonin which affects the biological clock (light/dark time).  
a) Pineal gland      b) Thyroid gland      c) Adrenal      d) Parathyroid gland
- Arthropoda has no.....  
a) Segmented body      b) Jointed appendages  
c) Radial symmetry      d) Exoskeleton
- Annelids are... .....animals.  
a) A coelomate      b) Pseudocoelomate      c) Coelomate      d) Diploblastic
- Which structures are used by *paramecium* for maintaining water balance?  
a) Contractile vacuoles      b) Pseudopodia  
c) Food vacuoles      d) Cilia
- The ribosome is a non membranous organelle that functions in process of..  
a) Protein synthesis      b) Pinocytosis  
c) Cellular respiration      d) Phagocytosis
- .....hormone increases the level of sugar in the blood.  
a) Insulin      b) Glycogen      c) Glucagon      d) Parathyroid
- Thyroid stimulating hormone is produced by.....gland  
a) Thyroid      b) Anterior lobe of pituitary  
c) Parathyroid      d) Posterior lobe of pituitary
- The circulatory system is opened in .....  
a) *Ascaris*      b) Insects      c) *Fasciola*      d) Earthworm
- The nervous system is absent in .....  
a) *Fasciola*      b) *Hydra*      c) *Ascaris*      d) Sponges
- The neuron is called .....when a single process arises from its body.  
a) Bipolar      b) Multipolar      c) Unicellular      d) Unipolar



9. If two organisms are in the same phylum, they must also be in the same....  
 a) Genus                      b) Species                      c) Class                      d) Kingdom
10. The tail of a phospholipid molecule is.....  
 a) Hydrophobic                      b) Hydrophilic  
 c) Neutrophil                      d) Hydrostatic
11. The process of formation of male and female gametes is known as.....  
 a) Fertilization      b) Oogenesis      c) Spermatogenesis      d) Gametogenesis
12. Which organelles modify, sort and package proteins in the cell?  
 a) Mitochondria      b) Ribosomes      c) Golgi complex      d) Lysosomes
13. ....attach bone to bone.  
 a) Tendons      b) Ligaments      c) Elastic C.T.      d) Dense irregular C.T.
14. The entrance of liquid materials across the cell membrane is called.....  
 a) Phagocytosis                      b) Pinocytosis  
 c) Exocytosis                      d) Plasmolysis
15. What type of glands secretes its product directly into the blood?  
 a) Endocrine                      b) Unicellular      c) Exocrine                      d) Goblet cell
16. ....are formed mainly of actin proteins.  
 a) Microtubules      b) Intermediate filaments      c) Microfilaments      d) All
17. Which one of the following is highly vascularized?  
 a) Cartilage                      b) Simple epithelium  
 c) Stratified epithelium                      d) Areolar C.T.
18. All bones, cartilages, blood and tendons originate from mesoderm.  
 a) True                      b) False
19. Which of the following is the correct scientific name of the honey bee?  
 a) *Apis Millifera*                      b) *apis Millifera*  
 c) *apis millifers*                      d) *Apis millifera*
20. Rank the following terms from simplest to most complex.  
 a) Cells, organelles, organs, tissues, organism  
 b) Tissues, cells, organelles, organs, organism  
 c) Organs, cells, organelles, tissues, organism  
 d) Organelles, cells, tissues, organs, organism

**Second question: Match column 1 with column 2**

**(10 marks)**

**(A) Match each of the following major tissue types with its function.**

Column 1	The answer	Column 2
1. Connective	<b>D</b>	(A) Transmits nerve impulse
2. Muscle		(B) Covers the body surfaces and forms glands
3. Epithelium		(C) Movement
4. Nervous		(D) Binding and Support

**(B) Match each of the following types of epithelium with its description.**

1. Simple columnar		(A) Single layer of cells that are equally wide as they are tall.
2. Pseudostratified columnar		(B) Multiple cell layers whose apical cells are flattened.
3. Simple squamous		(C) Single layer of flattened cells.
4. Stratified squamous		(D) Single layer of cells that vary in height, with nuclei at different levels.
5. Simple cuboidal		(E) Single layer of cells that are taller than they are wide.

**(C) Match the following types of connective tissue with the appropriate function/description**

1. Fat tissue		(A) Non-living material located between the cells of a connective tissue
2. Bone tissue		(B) Produces blood cells
3. Chondrocyte		(C) Strong bundles of fibers found mainly in tendons
4. White fibers		(D) Cartilage producing cell
5. Hematopoietic stem cell		(E) Supports and protects body structures; stores fat; synthesizes blood cells
6. Extracellular matrix		(F) Bone producing cell
		(H) Short and strong fibers found in spleen, and lymph nodes
		(I) Thermal insulation



(D) Match the column 1 with column 2		
1. Phylum Chordata		(A) Diploblastica
2. Phylum Porifera		(B) Defined species
3. Kingdom Protista		(C) Segmented with circulatory system
4. Phylum Annelida		(D) Composed of one cell
5. Ray		(E) No true tissues
6. Phylum Cnidaria		(F) Have tail
		(G) Established Binomial nomenclature

**Third question: Write the scientific expression of the following (5 marks)**

1. A membrane bound vesicle with hydrolyzing and digestive enzymes. (.....)
2. A science of biology deals with the structure and function of tissues. (.....)
3. The union of sperm and ovum to form zygote (.....)
4. A tissue that carries information from one part of the body to another. (.....)
5. A two name system for writing scientific names. (.....)
6. A type of cells having both nuclear membrane and membranous organelles in their cytoplasm (.....)
7. A type of neurons that transmits the nerve impulse from the brain to muscles or glands (.....)
8. Long branched fibers and are made of elastin proteins. (.....)
9. A circulatory system in which the blood is contained within vessels and circulates throughout the vessels. (.....)
10. The movement of molecules or ions from high to low concentration across the lipid bilayer of the cell membrane. (.....)

**Fourth question: Answer Five only of the following (15 marks)**

**1. Complete the following table about cartilages.**

Type of cartilage	1-.....	2-.....	3-.....
Dominant fibers	Elastic	.....	Has less fibers and the matrix is glassy
Location	.....	Intervertebral disc	.....



**2. List three differences only between Platyhelminthes and Nematodes.**

Differences	Platyhelminthes	Nematodes
Shape	.....	.....
Coelom	.....	.....
Digestive system	.....	.....

**3. Complete the following table about different types of animal eggs.**

Type of egg	1-.....	2-.....	3-.....
Amount of yolk	.....	.....	.....
Distribution of yolk	.....	.....	At the egg center
Give an example	Mammals	.....	.....

**4. Write one function only for the following:**

The organelle/tissue	Function
1.SER	.....
2. Nephridia	.....
3. Transitional epithelium	.....
4. Microtubules	.....
5. Centriole	.....
6. Simple squamous epithelium	.....

**5. What are the main differences between connective and epithelial tissue?**

Differences	Epithelial	Connective
1.	.....	.....
2.	.....	.....
3.	.....	.....

**6. Write short note on calcium homeostasis**

.....

.....

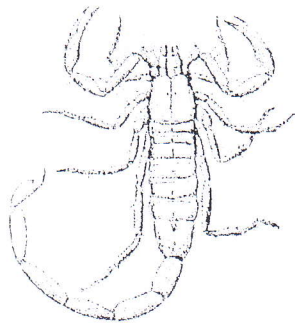
.....

.....

.....

**Fifth question: Answer Four only of the following**

**(10 marks)**

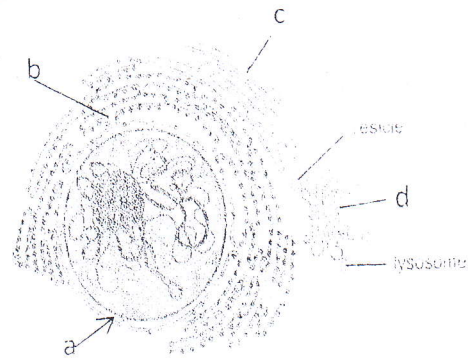


(A) Identify the type of symmetry

Is it an insect? ..... Why? .....

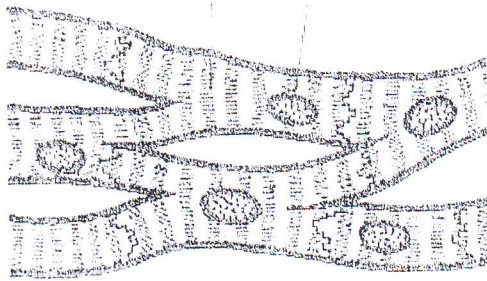
This animal belongs to phylum.....

Is it a vertebrate animal?.....



(B) Write labels from (a-d )

Function of label (a).....



(C) Identify the type of muscle.....

Location.....

Description.....

Function.....



(b) Identify :-.....

Functions: .....

Mention a phylum and an animal bears this structure.....

(E) Identify :.....

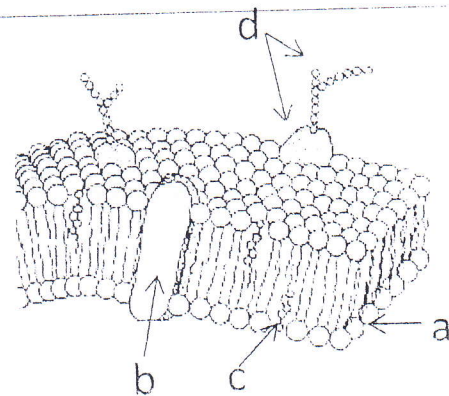
Labels:

a).....

b).....

Function: of label (c).....

d).....



By Drs. Safaa, Mona and Ali

With our best wishes