



MASTER DEGREE  
OF  
HUMAN PHYSIOLOGY  
Log Book

"كراسة الأنشطة"  
اللازمة لحصول المتدرب  
على درجة الماجستير  
فى علم وظائف الأعضاء  
2022-2023



## *CONTENTS*

<b>NO</b>	<b>SUBJECT</b>	<b>PAGE</b>
<b>1</b>	<b>Personal data</b>	<b>3</b>
<b>2</b>	<b>Instructions to the use of logbook</b>	<b>4</b>
<b>3</b>	<b>Program aims and curriculum structure</b>	<b>6</b>
<b>4</b>	<b>Basic Course I :Biochemistry or Basic Course I : Pharmacology or Basic Course I: Any other basic course or Basic Course I: Neurology or Basic Course I: Cardiology</b>	<b>8</b>
<b>5</b>	<b>Speciality course; Course 2: Medical Physiology</b>	<b>47</b>
<b>6</b>	<b>Other Scientific Activities</b>	<b>104</b>
<b>7</b>	<b>Master Degree Thesis pathway</b>	<b>116</b>
<b>8</b>	<b>Declaration:</b>	<b>117</b>



---

***Personal Data:***

**Name**.....

**Gender** .....

**Nationality** .....

**Date of birth**.....

**Address**.....

**Place of work**.....

**Telephones**.....

**Mobile phone(s)**.....

**E mail**.....

***Academic Information:***

**MBBCh**      **University** ...../...../.....

**Grade** .....

**Date of Master degree registration:** ...../...../.....

**Grade of Internal Medicine course on graduation** .....

**Others:** .....

**University** .....      ...../...../.....

**University** .....      ...../...../.....

**University** .....      ...../...../.....

---

### **\* Aim of the activities book**

To provide one source of evidence for the assessment committee that you attained the desired level of competency required to gain the award.

In this book you will document all clinical/practical, academic, other experiences and skills you attained during your training.

### **Sections of the book**

#### **For each module / course / rotation**

You should fill the following sections:-

#### **1- Clinical/Practical experiments presentation log**

1- You will first find list with all required cases/ or experiments in the concerned module and the minimum number of cases/ or experiments you must get exposed to and level of participation you should achieve for each type of cases/ or experiments.

2- You should record all clinical cases or experiments done in the module and each case/ or experiment should be signed by you trainer.

#### **2- Clinical/Practical case presentation log**

Record the cases or experiments related to the module that you have presented in a seminar or other activity.

---

### **3- Procedures log**

- 1- You will find a list for required procedure and level of desired performance you should achieve at the end of training.
- 2- You will find empty tables to write down the procedure, your level of participation and date and signature of supervisor.

### **4- Rotation / attendance proof**

You should have evidence of achievement the required training hours within each module.

*For the whole program fill the following sections.*

#### **1- Academic activities**

- A- Document all academic activities e.g. lecture journal clubs, workshops, conferences, services attended. This documentation should include the level of participation " attendance, preparation, presentation,....."

#### **2- Academic achievements**

- A- Document all outcomes you achieved in the field of:-
- Audit participation
  - Research "clinical trial" participation.
  - Evidence- based medicine "generation of guidelines" protocols

#### **3- Formative assessment log**

This document all types of formative assessment attended e.g.:-

- Mini clinical examination
- Quiseses

---

---

### **PROGRAMM AIMS**

1/1: To prepare highly qualified physiologists.

1/2: To prepare candidates to the basics of scientific medical research and its ethics.

1/3: To enable the candidates to develop basic concepts and principles of human physiology logically and clearly correlate and analyze physiological phenomena.

1/4: To provide an educational environment that encourages creativity and research both fundamental and applied.

1/5: To enable students improves their skills in research and undergraduate teaching.

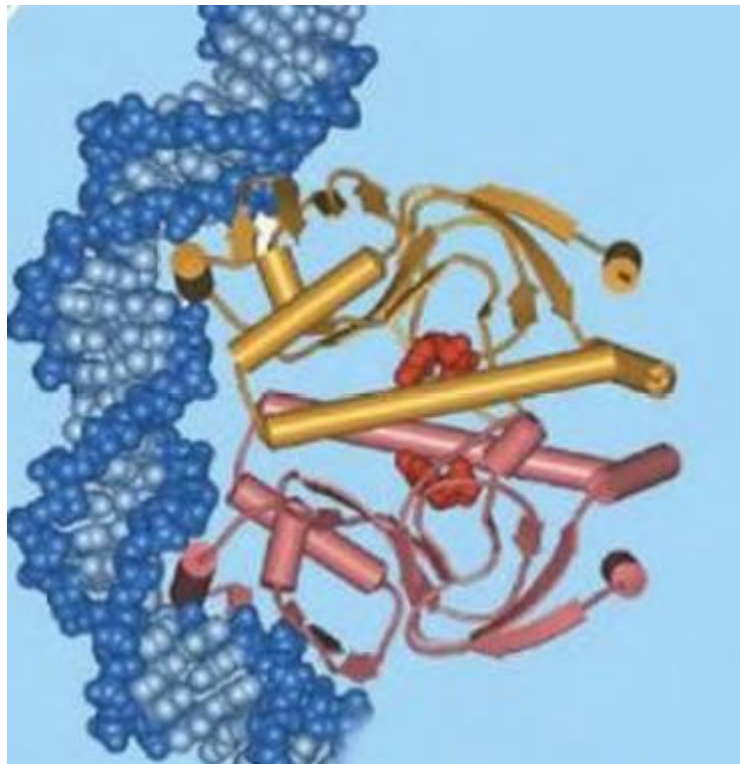
1/6: By the end of the program students will be able to:

1. Have a satisfactory level of knowledge of the cellular basis of Medical physiology and function of organ systems of the body and the control systems of the human body and varies body functions in health.
2. Develop knowledge concerning molecular biology & the bases of genetics.
3. Understand and get the best of published scientific researches.



- 
4. Emphasis is placed on the acquisition of a sound basic training in general physiology through individually planned programs of course work, tutorials, seminars and supervised research.
  5. Demonstrate skills in oral and written presentations.
  6. Provide an understanding of quality assurance issues.
  7. Become acquainted with the methods of consulting the literature and preparing review.
  8. Develop a professional skill in techniques used for experimental physiology on isolated organs, tissues and whole animals.
  9. Graduates with a degree in physiology can pursue careers in research, teaching or management in academia, the pharmaceutical and biotechnology industries, private research institutions, government science or regulatory agencies, or medicine and health care.

# course "I-1" BIOCHEMISTRY







---

---

Course “I-1”  
**BIOCHEMISTRY**

**1. Practical experiments log book**

No	Experiment	Number of each experiments
1	Different methods of collection and preparation of body fluid samples.	
2	Estimation of some indices by kits (ELISA & RIA).	
3	Chemical methods of measurement of some indices.	

**Requirements**

- I. Attendance of at least 80% of practical sections.
- II. Doing at least 5 experiments in each.
- III. Students are able to do experiments and recognized procedures.
- IV. Practical assessment at the end of course.



## 2- Practical experiments presentation log book

Record the cases related to the module that you have presented in a seminar or other activity.

H.N	Diagnosis of case	Level of participation *	Location	Signature of supervisor

\* Level of participation

A- Plan and carry out

B- Carry out

C- Carry out under supervision

## 3- Procedures log book

H N	Procedure	Level of competency*	Location	Signature

\* Level of competency

A- Independent performance

B- Performance under supervision

C- Observed



- I. Attendance of at least 80% of practical sections.
- II. Doing at least 2 experiments in each done independent

[illegible]

## Postgraduate student's program Rotation in training assessment

\* **Name:**




\* **Period of training From:**




**To:**

\* **Site:**

### \*Rotation

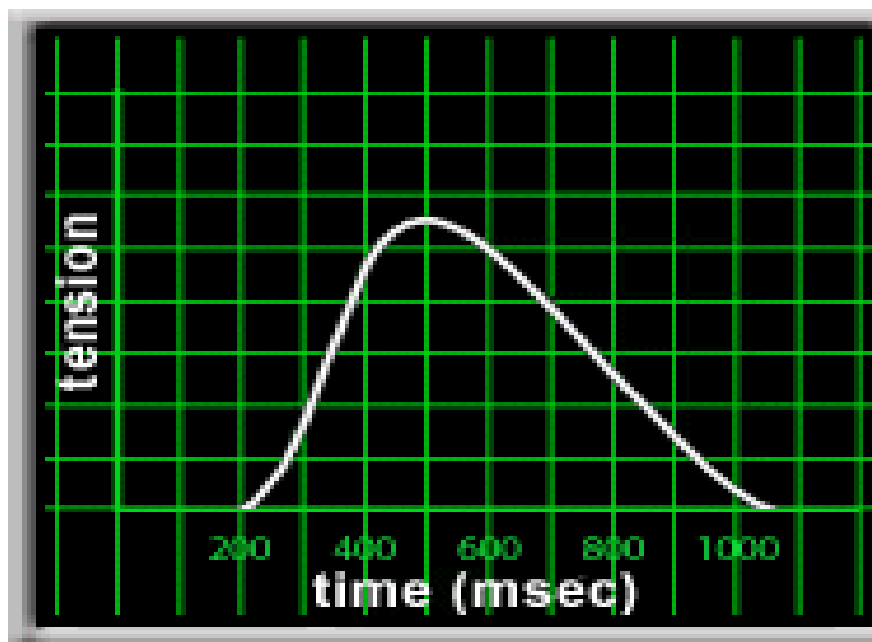
General skills	could not judge (0)	strongly disagree (1)	(2 ) (3)	(4 ) (5)	(6)	strongly agree (7)
Perform practice-based improvement activities using a systematic methodology (share in audits and risk management activities And use logbooks).						
Appraises evidence from scientific studies.						
Conduct epidemiological Studies and surveys.						
Perform data management including data entry and analysis and Using information technology to manage information, access on-line medical information; and support their own education.						

General skills	could not judge (0)	strongly disagree (1)	(2 ) (3)		(4 ) (5)		(6)	strongly agree (7)
								
Facilitate learning of students, lab technical staff and other health care professionals including their evaluation and assessment.								
Maintain therapeutic and ethically sound relationship with patients, their families, lab technical staff and other health professionals.								
Elicit information using effective nonverbal, explanatory, questioning, and writing skills.								
Provide information using effective nonverbal, explanatory, questioning, and writing skills.								
Work effectively with others as a member of a team or other professional group.								
Demonstrate respect, compassion, and integrity; a responsiveness to the needs of patients and society.								
Demonstrate a commitment to ethical principles including provision or withholding of clinical care, confidentiality of patient information, informed consent, business practices.								

General skills	could not judge (0)	strongly disagree (1)	(2 ) (3)		(4 ) (5)		(6)	strongly agree (7)
								
Demonstrate sensitivity and responsiveness to patients' culture, age, gender, and disabilities.								
Work effectively in relevant academic and health care delivery settings and systems including good administrative and time management.								
Adopt cost-effective practice and resource allocation that does not compromise quality of services.								
Assist patients in dealing with system complexities.								

# course "1-2"

## PHARMACOLOGY





---

---

Course “I-2”  
PHARMACOLOGY

*1. Practical experiments log book*

No	Experiment	Number of each experiments
1	Preparation of different physiological solutions.	
2	Experiments on isolated organs and effect of different drugs on them.	

**Requirements**

- I. Attendance of at least 80% of practical sections.
- II. Doing at least 5 experiments in each.
- III. Students are able to do experiments and recognized procedures.
- IV. Practical assessment at the end of course.





## 2- Practical experiments presentation log book

Record the cases related to the module that you have presented in a seminar or other activity.

H.N	Diagnosis of case	Level of participation *	Location	Signature of supervisor

\* Level of participation

A- Plan and carry out

B- Carry out

C- Carry out under supervision



### 3- Procedures log book

H N	Procedure	Level of competency*	Location	Signature

\* Level of competency

A- Independent performance

B- Performance under supervision

C- Observed



- I. Attendance of at least 80% of practical sections.
- II. Doing at least 4 experiments in each done independent

[illegible]

## Postgraduate student's program Rotation in training assessment

\* **Name:**

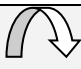


\* **Period of training From:**




**To:**

\* **Site:**

### \*Rotation

General skills	could not judge (0)	strongly disagree (1)	(2 ) (3)	(4 ) (5)	(6)	strongly agree (7)
Perform practice-based improvement activities using a systematic methodology (share in audits and risk management activities And use logbooks).						
Appraises evidence from scientific studies.						
Conduct epidemiological Studies and surveys.						
Perform data management including data entry and analysis and Using information technology to manage information, access on-line medical information; and support their own education.						

General skills	could not judge (0)	strongly disagree (1)	(2 )  (3)		(4 )  (5)		(6) 	strongly agree (7)
Facilitate learning of students, lab technical staff and other health care professionals including their evaluation and assessment.								
Maintain therapeutic and ethically sound relationship with patients, their families, lab technical staff and other health professionals.								
Elicit information using effective nonverbal, explanatory, questioning, and writing skills.								
Provide information using effective nonverbal, explanatory, questioning, and writing skills.								
Work effectively with others as a member of a team or other professional group.								
Demonstrate respect, compassion, and integrity; a responsiveness to the needs of patients and society.								
Demonstrate a commitment to ethical principles including provision or withholding of clinical care, confidentiality of patient information, informed consent, business practices.								

General skills	could not judge (0)	strongly disagree (1)	(2 ) (3)		(4 ) (5)		(6)	strongly agree (7)
								
Demonstrate sensitivity and responsiveness to patients' culture, age, gender, and disabilities.								
Work effectively in relevant academic and health care delivery settings and systems including good administrative and time management.								
Adopt cost-effective practice and resource allocation that does not compromise quality of services.								
Assist patients in dealing with system complexities.								



---

course "1-3"

Any other Basic course



---

---

Course “I-3”

**1. Practical experiments log book**

No	Experiment	Number of each experiments
1		
2		
3		

**Requirements**

- I. Attendance of at least 80% of practical sections.
- II. Doing at least 5 experiments in each.
- III. Students are able to do experiments and recognized procedures.
- IV. Practical assessment at the end of course.





## **2- Practical experiments presentation log book**

Record the cases related to the module that you have presented in a seminar or other activity.

<b>H.N</b>	<b>Diagnosis of case</b>	<b>Level of participation *</b>	<b>Location</b>	<b>Signature of supervisor</b>

\* Level of participation

A- Plan and carry out

B- Carry out

C- Carry out under supervision

[illegible]

A- Independent performance  
B- Performance under supervision  
C- Observed



- I. Attendance of at least 80% of practical sections.
- II. Doing at least 4 experiments in each done independent

[illegible]

## Postgraduate student's program Rotation in training assessment

\* **Name:**

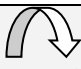


\* **Period of training From:**

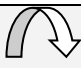


**To:**

\* **Site:**

### \*Rotation

General skills	could not judge (0)	strongly disagree (1)	(2 ) (3)	(4 ) (5)	(6)	strongly agree (7)
Perform practice-based improvement activities using a systematic methodology (share in audits and risk management activities And use logbooks).						
Appraises evidence from scientific studies.						
Conduct epidemiological Studies and surveys.						
Perform data management including data entry and analysis and Using information technology to manage information, access on-line medical information; and support their own education.						

General skills	could not judge (0)	strongly disagree (1)	(2 )  (3)		(4 )  (5)		(6) 	strongly agree (7)
Facilitate learning of students, lab technical staff and other health care professionals including their evaluation and assessment.								
Maintain therapeutic and ethically sound relationship with patients, their families, lab technical staff and other health professionals.								
Elicit information using effective nonverbal, explanatory, questioning, and writing skills.								
Provide information using effective nonverbal, explanatory, questioning, and writing skills.								
Work effectively with others as a member of a team or other professional group.								
Demonstrate respect, compassion, and integrity; a responsiveness to the needs of patients and society.								
Demonstrate a commitment to ethical principles including provision or withholding of clinical care, confidentiality of patient information, informed consent, business practices.								

General skills	could not judge (0)	strongly disagree (1)	(2 ) (3)		(4 ) (5)		(6)	strongly agree (7)
								
Demonstrate sensitivity and responsiveness to patients' culture, age, gender, and disabilities.								
Work effectively in relevant academic and health care delivery settings and systems including good administrative and time management.								
Adopt cost-effective practice and resource allocation that does not compromise quality of services.								
Assist patients in dealing with system complexities.								

# course "I-4" NEUROLOGY



course "I-4"  
**NEUROLOGY**

**1. Case/Practical experiments log book**

No	Experiment	Number of each experiments
1	Learning practical of neurophysiology as electroencephalograph (EEG).	
2	Learning practical of myogram.	
3	Learning practical of evoked potentials.	
4	Knowing complete neurological examination of the patients (cranial nerves, sensory, motor, coordination tests, vestibular apparatus).	

**Requirements**

- I. Attendance of at least 80% of practical sections.
- II. Doing at least 5 experiments or cases in each.
- III. Students are able to do techniques and recognized procedures.
- IV. Practical assessment at the end of course.





## 2- Practical experiments presentation log book

Record the cases related to the module that you have presented in a seminar or other activity.

H.N	Diagnosis of case	Level of participation *	Location	Signature of supervisor

\* Level of participation

A- Plan and carry out

B- Carry out

C- Carry out under supervision



### 3- Procedures log book

H N	Procedure	Level of competency*	Location	Signature

\* Level of competency

A- Independent performance

B- Performance under supervision

C- Observed



I. Attendance of at least 80% of practical sections.

## II. Doing at least 5 procedures and examination of patients done independent

[illegible]

## Postgraduate student's program Rotation in training assessment

\* **Name:**

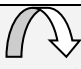


\* **Period of training From:**

**To:**

\* **Site:**

### \*Rotation

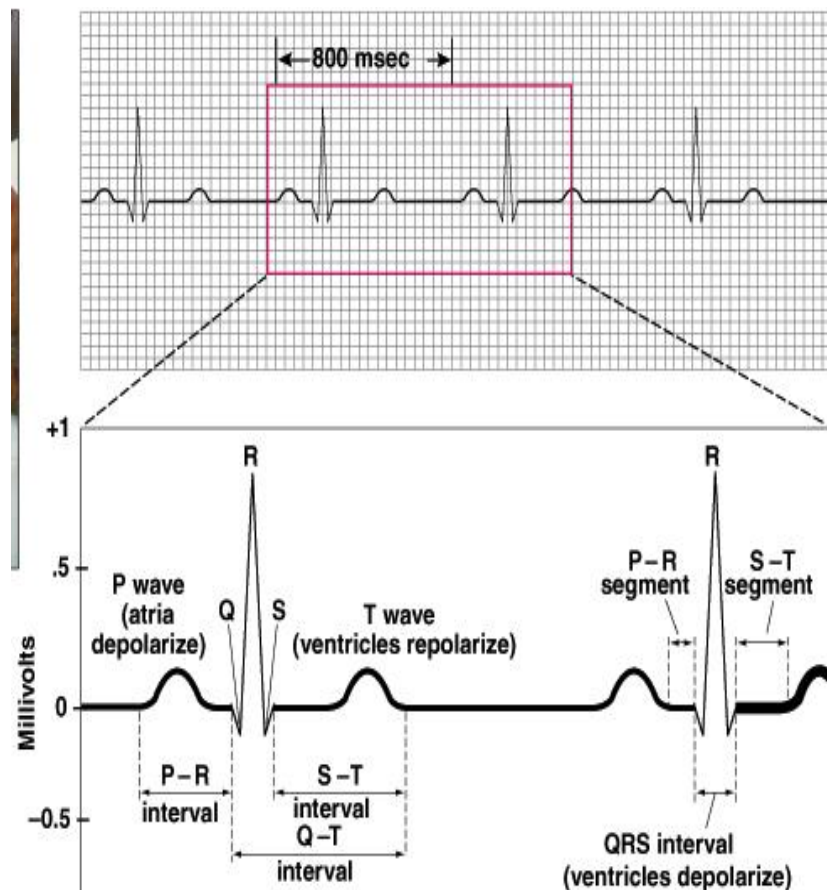
General skills	could not judge (0)	strongly disagree (1)	(2 )	(3)	(4 )	(5)	(6)	strongly agree (7)
Perform practice-based improvement activities using a systematic methodology (share in audits and risk management activities And use logbooks).								
Appraises evidence from scientific studies.								
Conduct epidemiological Studies and surveys.								
Perform data management including data entry and analysis and Using information technology to manage information, access on-line medical information; and support their own education.								

General skills	could not judge (0)	strongly disagree (1)	(2 )  (3)		(4 )  (5)		(6) 	strongly agree (7)
Facilitate learning of students, lab technical staff and other health care professionals including their evaluation and assessment.								
Maintain therapeutic and ethically sound relationship with patients, their families, lab technical staff and other health professionals.								
Elicit information using effective nonverbal, explanatory, questioning, and writing skills.								
Provide information using effective nonverbal, explanatory, questioning, and writing skills.								
Work effectively with others as a member of a team or other professional group.								
Demonstrate respect, compassion, and integrity; a responsiveness to the needs of patients and society.								
Demonstrate a commitment to ethical principles including provision or withholding of clinical care, confidentiality of patient information, informed consent, business practices.								

General skills	could not judge (0)	strongly disagree (1)	<div>↩ ↪</div> (2 ) (3)		<div>↩ ↪</div> (4 ) (5)		<div>↩ ↪</div> (6)	strongly agree (7)
Demonstrate sensitivity and responsiveness to patients' culture, age, gender, and disabilities.								
Work effectively in relevant academic and health care delivery settings and systems including good administrative and time management.								
Adopt cost-effective practice and resource allocation that does not compromise quality of services.								
Assist patients in dealing with system complexities.								

# course "1-5"

# CARDIOLOGY





course “I-5”  
**CARDIOLOGY**

**1. Case/Practical experiments log book**

No	Experiment	Number of each experiments
1	Knowing how to do ECG and interpretation on it.	
2	Knowing basis of echocardiography & catheterization	

**Requirements**

- I. Attendance of at least 80% of practical sections.
- II. Doing at least 5 procedures in each.
- III. Students are able to do techniques and recognized procedures.
- IV. Practical assessment at the end of course.





## **2- Practical experiments presentation log book**

Record the cases related to the module that you have presented in a seminar or other activity.

<b>H.N</b>	<b>Diagnosis of case</b>	<b>Level of participation *</b>	<b>Location</b>	<b>Signature of supervisor</b>

\* Level of participation

A- Plan and carry out

B- Carry out

C- Carry out under supervision

[illegible]

A- Independent performance  
B- Performance under supervision  
C- Observed



I. Attendance of at least 80% of practical sections.

#### **4- Rotation / attendance proof**

---

43

## Postgraduate student's program Rotation in training assessment

\* **Name:**

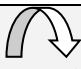


\* **Period of training From:**

**To:**

\* **Site:**

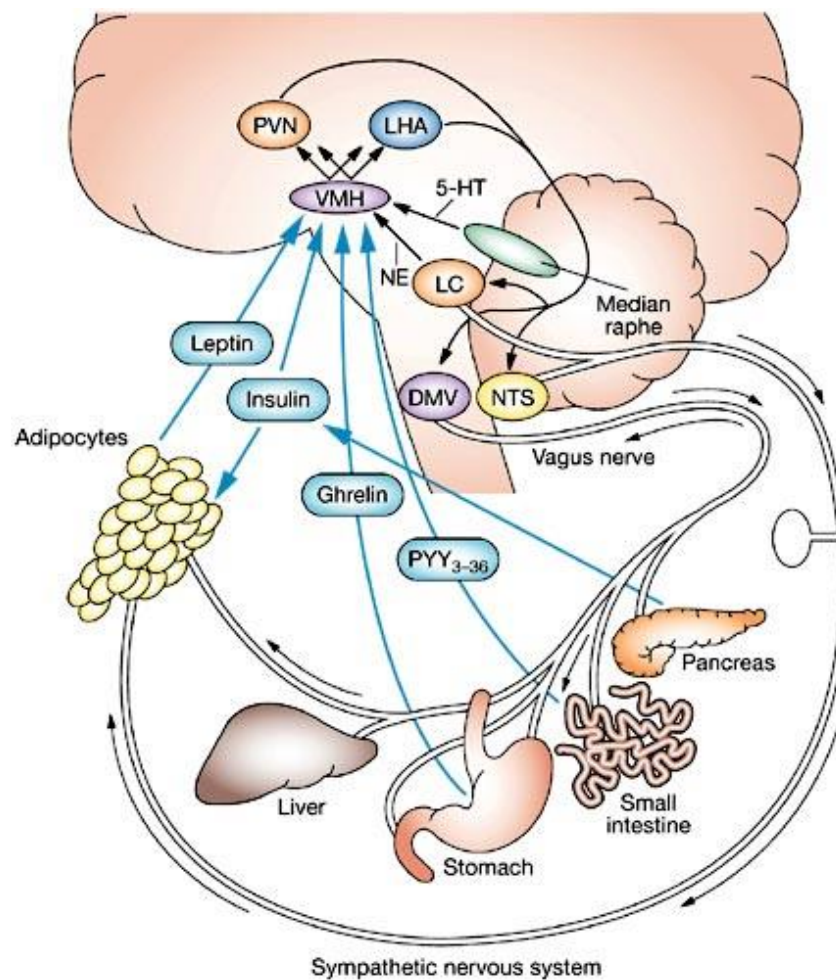
### \*Rotation

General skills	could not judge (0)	strongly disagree (1)	(2 ) (3)	(4 ) (5)	(6)	strongly agree (7)
Perform practice-based improvement activities using a systematic methodology (share in audits and risk management activities And use logbooks).						
Appraises evidence from scientific studies.						
Conduct epidemiological Studies and surveys.						
Perform data management including data entry and analysis and Using information technology to manage information, access on-line medical information; and support their own education.						

General skills	could not judge (0)	strongly disagree (1)	(2 )  (3)		(4 )  (5)		(6) 	strongly agree (7)
Facilitate learning of students, lab technical staff and other health care professionals including their evaluation and assessment.								
Maintain therapeutic and ethically sound relationship with patients, their families, lab technical staff and other health professionals.								
Elicit information using effective nonverbal, explanatory, questioning, and writing skills.								
Provide information using effective nonverbal, explanatory, questioning, and writing skills.								
Work effectively with others as a member of a team or other professional group.								
Demonstrate respect, compassion, and integrity; a responsiveness to the needs of patients and society.								
Demonstrate a commitment to ethical principles including provision or withholding of clinical care, confidentiality of patient information, informed consent, business practices.								

General skills	could not judge (0)	strongly disagree (1)	<div>↩</div> <div>(2 ) (3)</div>		<div>↩</div> <div>(4 ) (5)</div>		<div>↩</div> <div>(6)</div>	strongly agree (7)
Demonstrate sensitivity and responsiveness to patients' culture, age, gender, and disabilities.								
Work effectively in relevant academic and health care delivery settings and systems including good administrative and time management.								
Adopt cost-effective practice and resource allocation that does not compromise quality of services.								
Assist patients in dealing with system complexities.								

# Speciality course: Course 2: (Medical Physiology)



Units' Titles' list	% from total Marks	Level (Year)	Core Credit points		
			Didactic	training	Total
1. Unit {Module) 1: General & Cellular Basis of Medical Physiology.		1,2	1	2	3
2. Unit {Module) 2: Nerve and Muscle.		1,2	1	4	5
3. Unit {Module) 3: Autonomic Nervous system.		1,2	1	4	5
4. Unit {Module) 4: Physiology of the Central Nervous System and Special Sense.		2,3	5	28	33
5. Unit {Module) 5: Cardiovascular Physiology.		1,2	4	22	26
6. Unit {Module) 6: Blood & Immunity.		1,2	2	12	14
7. Unit {Module) 7: Gastrointestinal physiology.		1,2	2	8	10
8. Unit {Module) 8: Respiration.		1,2	2	13	15
9. Unit {Module) 9: General Metabolism and Regulation of Body Temperature.		2,3	1	5	6
10. Unit {Module) 10: Renal Physiology.		2,3	1	8	9
11. Unit {Module) 11: Body fluids, Electrolytes and Acid Base Regulation.		2,3	1	2	3
12. Unit {Module) 12: Endocrine System and Reproduction.		2,3	1	9	10
<b>Total No of units</b>	<b>12</b>		<b>24</b>	<b>116</b>	<b>140</b>



Second Part	Speciality courses Speciality Clinical Work			
<b>Speciality Courses</b> 1. Unit 1: General & Cellular Basis of Medical Physiology. 2. Unit 2: Nerve and Muscle. 3. Unit 3: Autonomic Nervous system. 4. Unit 4: Physiology of the Central Nervous System and Special Sense. 5. Unit 5: Cardiovascular Physiology. 6. Unit 6: Blood & Immunity. 7. Unit 7: Gastrointestinal physiology. 8. Unit 8: Respiration. 9. Unit 9: General Metabolism and Regulation of Body Temperature. 10. Unit 10: Renal Physiology. 11. Unit 11: Body fluids, Electrolytes and Acid Base Regulation. 12) Unit 12: Endocrine System and Reproduction.	<b>PHY203A</b>			
<b>Total of the second part</b>		<b>24</b>	<b>96</b>	<b>120</b>

## Requirements

\*Fulfilling of requirements either didactics or practical attendance and experiments is at least 80% of requirements.

\* Formative assessment at least every 6 months.

### Course 2; Unit: ENDOCRINOLOGY

#### 1. Practical experiments log book

No	Experiment	Number of each experiments
1	Function tests of endocrine glands	

## Requirements

I. Attendance of at least 80% of practical sections.

II. Doing at least 5 experiments in each.

III. Students are able to do experiments and recognized procedures.

IV. Practical assessment at the end of course.

## 2- Practical experiments presentation log book

Record the cases related to the module that you have presented in a seminar or other activity.

H.N	Diagnosis of case	Level of participation *	Location	Signature of supervisor

\* Level of participation

A- Plan and carry out

B- Carry out

C- Carry out under supervision



### 3- Procedures log book

H N	Procedure	Level of competency*	Location	Signature

\* Level of competency

A- Independent performance

B- Performance under supervision

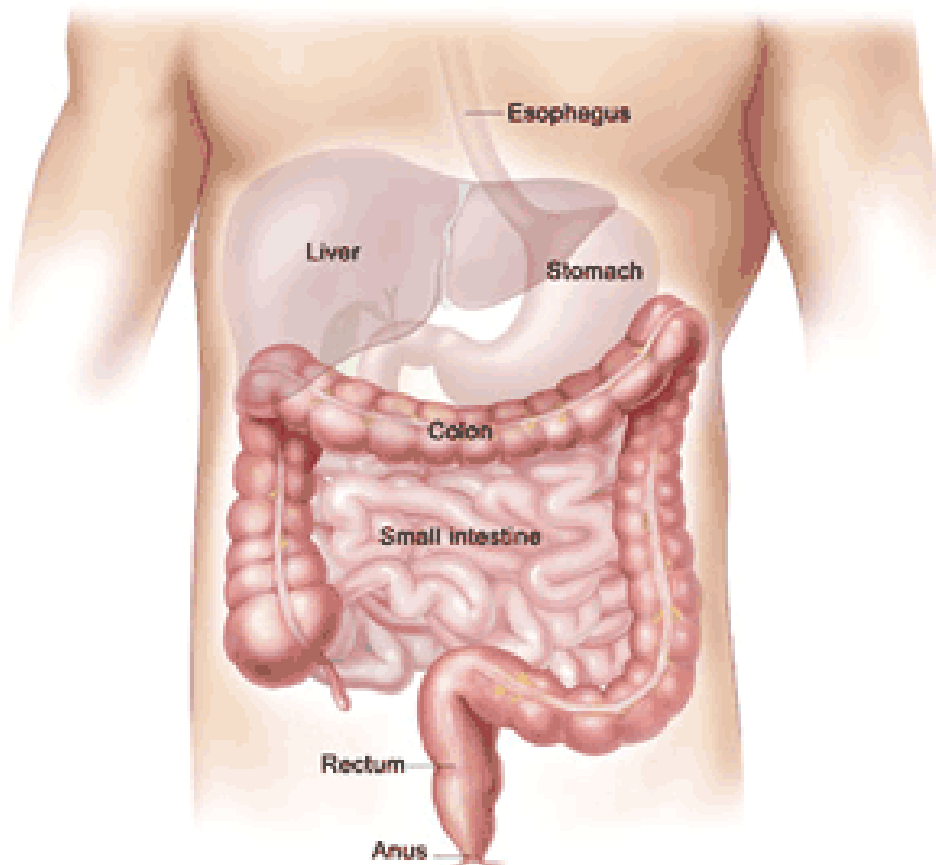
C- Observed



- I. Attendance of at least 80% of practical sections.
- II. Doing at least 4 experiments in each done independent

[illegible]

# Course 2; unit: GASTROENTEROLOGY





---

---

**Course 2; unit :GASTROENTEROLOGY**

**1. Practical experiments log book**

No	Experiment	Number of each experiments
1	Function tests of different organs of GIT	
2	Test of motility of different organs of GIT	
3	Test of secretions of different organs of GIT	

**Requirements**

- I. Attendance of at least 80% of practical sections.
- II. Doing at least 5 experiments in each.
- III. Students are able to do experiments and recognized procedures.
- IV. Practical assessment at the end of course.



## **2- Practical experiments presentation log book**

Record the cases related to the module that you have presented in a seminar or other activity.

<b>H.N</b>	<b>Diagnosis of case</b>	<b>Level of participation *</b>	<b>Location</b>	<b>Signature of supervisor</b>

\* Level of participation

A- Plan and carry out

B- Carry out

C- Carry out under supervision





### 3- Procedures log book

H N	Procedure	Level of competency*	Location	Signature

\* Level of competency

A- Independent performance

B- Performance under supervision

C- Observed

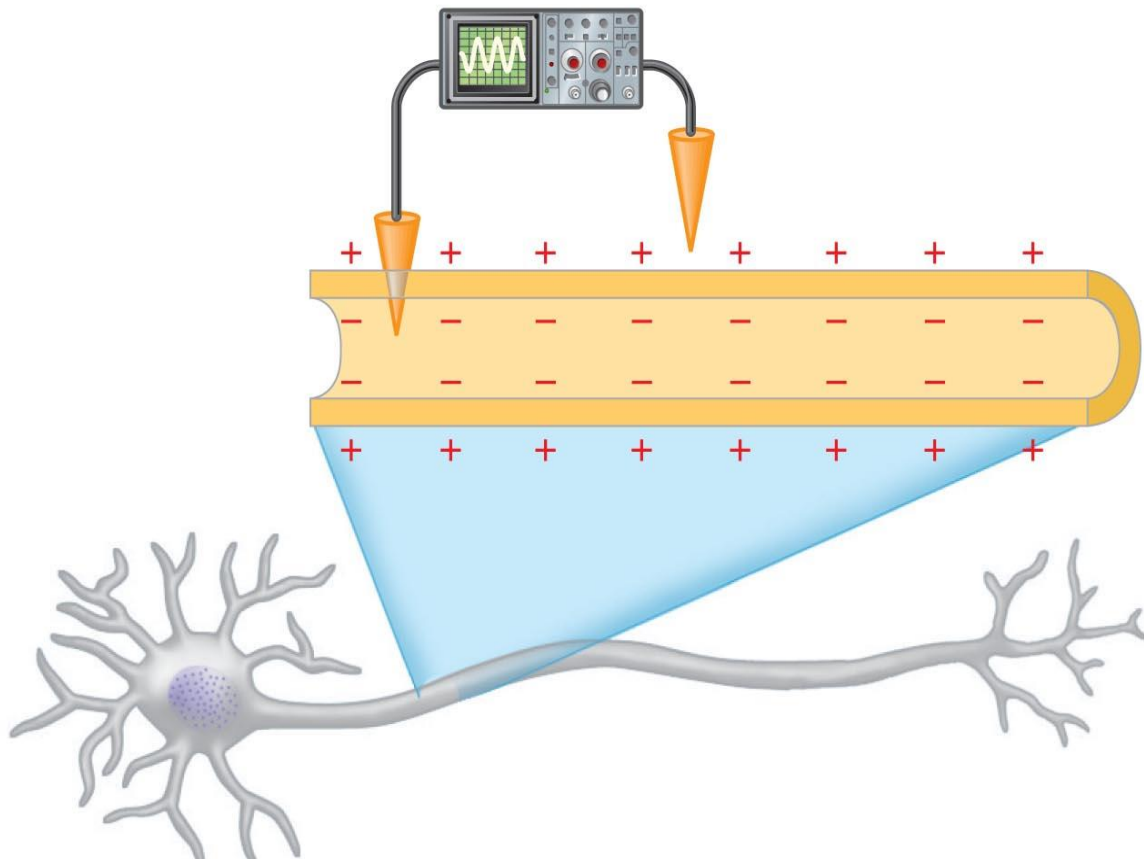


- I. Attendance of at least 80% of practical sections.
- II. Doing at least 4 experiments in each done independent

[illegible]

# Course 2; unit 1

## MUSCLE & NERVE



## Course 2; unit 1: MUSCLE & NERVE

### 1. Case/Practical experiments log book

No	Experiment	Number of each experiments
1	Preparation of model of nerve and muscle	
2	Studying different factors affecting nerve excitation and skeletal muscles contraction.	
3	Induction of evoked potential of nerve	

### Requirements

- I. Attendance of at least 80% of practical sections.
- II. Doing at least 5 procedures in each.
- III. Students are able to do techniques and recognized procedures.
- IV. Practical assessment at the end of course.



## 2- Practical experiments presentation log book

Record the cases related to the module that you have presented in a seminar or other activity.

H.N	Diagnosis of case	Level of participation*	Location	Signature of supervisor

\* Level of participation

A- Plan and carry out

B- Carry out

C- Carry out under supervision

[illegible]

A- Independent performance  
B- Performance under supervision  
C- Observed



I. Attendance of at least 80% of practical sections.

## II. Doing at least 5 procedures done independent

[illegible]

---

# Course 2; unit 2: CENTRAL NERVOUS SYSTEM & SPECIAL SENSES





## Course 2: 2unit : CENTRAL NERVOUS SYSTEM & SPECIAL SENSES

### 1. Case/Practical experiments log book

No	Experiment	Number of each experiments
1	Recording of electro-encephalograph	
2	Recording of electro-myograph	
3	Recording of nerve conduction velocity	
4	Examination of central nervous system (cranial nerves, sensory, motor, co-ordination tests and vestibular apparatus).	
5	Doing hearing tests by tuning fork	
6	Recording of audiometer	
7	Examination of visual field	
8	Determination of visual acuity	
9	Evaluation of color vision	
10	Examination of intra-ocular pressure	
11	Examination of the fundus	

## Requirements

- I. Attendance of at least 80% of practical sections.
- II. Doing at least 5 procedures in each.
- III. Students are able to do techniques and recognized procedures.
- IV. Practical assessment at the end of course.

### 2- Practical experiments presentation log book

Record the cases related to the module that you have presented in a seminar or other activity.

H.N	Diagnosis of case	Level of participation*	Location	Signature of supervisor

\* Level of participation

A- Plan and carry out

B- Carry out

C- Carry out under supervision

[illegible]

A- Independent performance  
B- Performance under supervision  
C- Observed

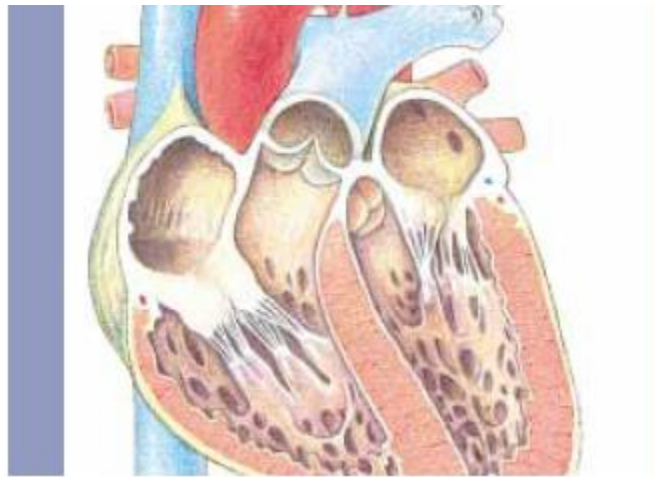


I. Attendance of at least 80% of practical sections.

## II. Doing at least 5 procedures done independent

[illegible]

# Course 2; Unit 3: CARDIOVASCULAR SYSTEM



## Course 2; unit 3: CARDIOVASCULAR SYSTEM

### 1. Case/Practical experiments log book

No	Experiment	Number of each experiments
1	Isolated perfuse heart (rabbit & frog) experiments and determined factors affecting them	
2	Recording of arterial blood pressure in humans and experimental animals.	
3	Recording of heart rates in humans and experimental animals.	
4	Recording of electrocardiograph (ECG) in humans and experimental animals.	
5	Recording the effect of cholinergic and adrenergic drugs on blood pressure, heart rate, ECG in experimental animals.	
6	Measurement of activity of the Baroreceptors on sympathetic and parasympathetic nervous system.	



## Requirements

- I. Attendance of at least 80% of practical sections.
- II. Doing at least 5 procedures in each.
- III. Students are able to do techniques and recognized procedures.
- IV. Practical assessment at the end of course.

### 2- Practical experiments presentation log book

Record the cases related to the module that you have presented in a seminar or other activity.

H.N	Diagnosis of case	Level of participation*	Location	Signature of supervisor

\* Level of participation

A- Plan and carry out

B- Carry out

C- Carry out under supervision

[illegible]

A- Independent performance  
B- Performance under supervision  
C- Observed





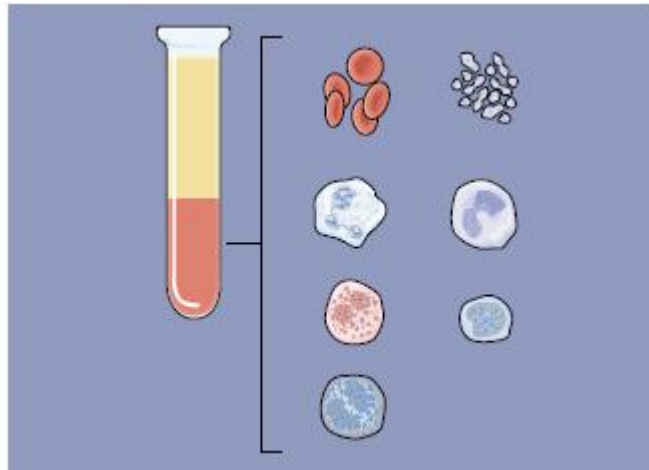
I. Attendance of at least 80% of practical sections.

## II. Doing at least 5 procedures done independent

[illegible]

# Course 2; unit 4:

## BLOOD



## Course 2; unit 4: BLOOD

### 1. Case/Practical experiments log book

No	Experiment	Number of each experiments
1	Assessment hemoglobin contents	
2	Assessment bleeding time, coagulation time, prothrombin time.	
3	Assessment of Erythrocytic sedimentation rate	
4	Determination of blood groups	
5	Assessment of blood hemolysis	
6	Determination of different blood indices in human	

### Requirements

- I. Attendance of at least 80% of practical sections.
- II. Doing at least 5 procedures in each.
- III. Students are able to do techniques and recognized procedures.
- IV. Practical assessment at the end of course.



## 2- Practical experiments presentation log book

Record the cases related to the module that you have presented in a seminar or other activity.

H.N	Diagnosis of case	Level of participation*	Location	Signature of supervisor

\* Level of participation

A- Plan and carry out

B- Carry out

C- Carry out under supervision



### 3- Procedures log book

H N	Procedure	Level of competency*	Location	Signature

\* Level of competency

A- Independent performance

B- Performance under supervision

C- Observed

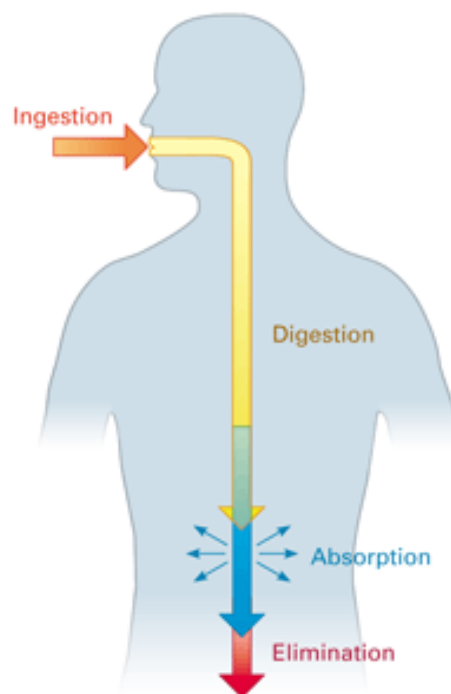


I. Attendance of at least 80% of practical sections.

## II. Doing at least 5 procedures done independent

[illegible]

# Course 2; unit 5: GASTROINTESTINAL TRACT (GIT)





---

---

**Course 2; unit 5: GASTROINTESTINAL TRACT**

**1. Case/Practical experiments log book**

No	Experiment	Number of each experiments
1	Making different models of gastrointestinal tract	
2	Recording factors affecting GIT contractility, secretion and motility	
3	Gastric function tests	

**Requirements**

- I. Attendance of at least 80% of practical sections.
- II. Doing at least 5 procedures in each.
- III. Students are able to do techniques and recognized procedures.
- IV. Practical assessment at the end of course.





## 2- Practical experiments presentation log book

Record the cases related to the module that you have presented in a seminar or other activity.

H.N	Diagnosis of case	Level of participation*	Location	Signature of supervisor

\* Level of participation

A- Plan and carry out

B- Carry out

C- Carry out under supervision

[illegible]

A- Independent performance  
B- Performance under supervision  
C- Observed



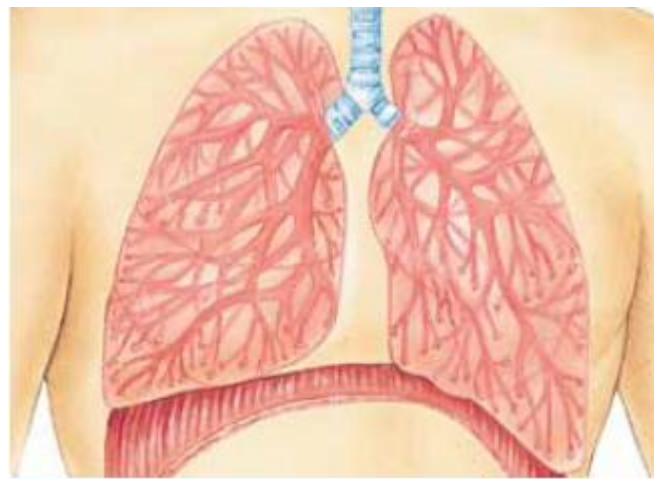
I. Attendance of at least 80% of practical sections.

## II. Doing at least 5 procedures done independent

[illegible]

# Course 2: Unit 6:

# RESPIRATION





---

---

**Course 2; unit 6: RESPIRATION**

**1. Case/Practical experiments log book**

No	Experiment	Number of each experiments
1	Pulmonary functions tests in human and experimental animals	

**Requirements**

- I. Attendance of at least 80% of practical sections.
- II. Doing at least 5 procedures in each.
- III. Students are able to do techniques and recognized procedures.
- IV. Practical assessment at the end of course.

## 2- Practical experiments presentation log book

Record the cases related to the module that you have presented in a seminar or other activity.

H.N	Diagnosis of case	Level of participation*	Location	Signature of supervisor

\* Level of participation

A- Plan and carry out

B- Carry out

C- Carry out under supervision

[illegible]

A- Independent performance  
B- Performance under supervision  
C- Observed



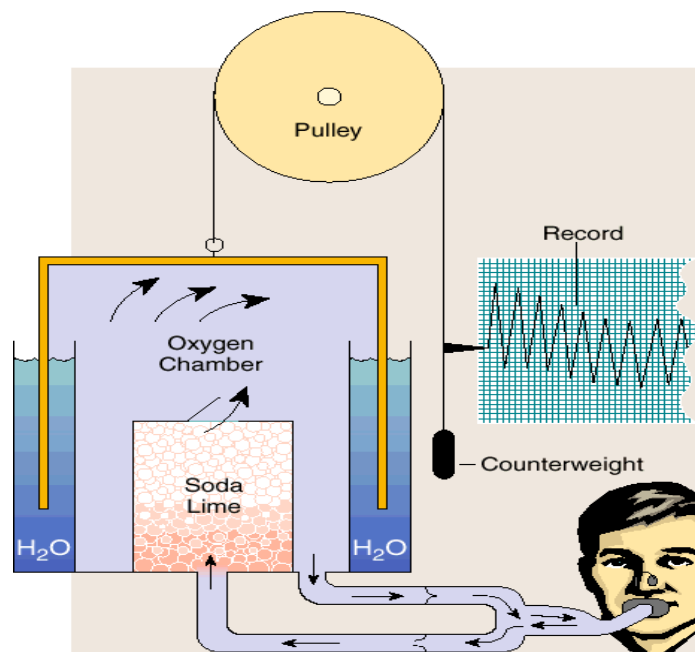
I. Attendance of at least 80% of practical sections.

## II. Doing at least 5 procedures done independent

[illegible]



# Course 2; Unit 7: GENERAL METABOLISM & REGULATION OF BODY TEMPERATURE





---

---

**Course 2; unit 7: GENERAL METABOLISM  
&  
REGULATION OF BODY TEMPERATURE**

**1. Case/Practical experiments log book**

No	Experiment	Number of each experiments
1	Estimation of indirect basal metabolic rate	

**Requirements**

- I. Attendance of at least 80% of practical sections.
- II. Doing at least 5 procedures in each.
- III. Students are able to do techniques and recognized procedures.
- IV. Practical assessment at the end of course.



## **2- Practical experiments presentation log book**

Record the cases related to the module that you have presented in a seminar or other activity.

H.N	Diagnosis of case	Level of participation*	Location	Signature of supervisor

\* Level of participation

A- Plan and carry out

B- Carry out

C- Carry out under supervision

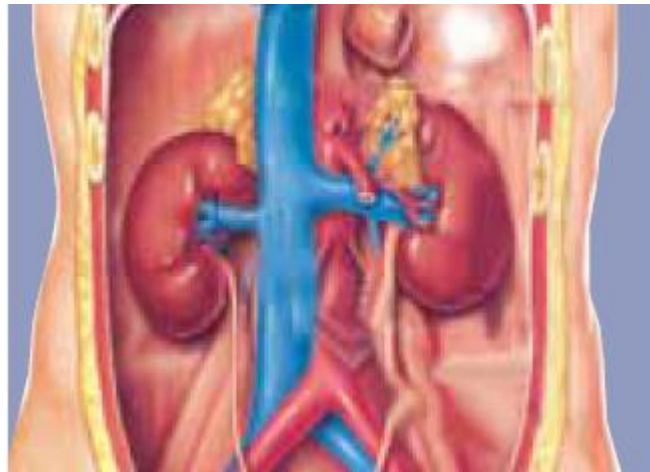
[illegible]

A- Independent performance  
B- Performance under supervision  
C- Observed



# Course 2; unit: 8

## RENAL SYSTEM



## Course 2; Unit 8:RENAL SYSTEM

### 1. Case/Practical experiments log book

No	Experiment	Number of each experiments
1	Assessment of kidney functions as urine and blood analysis and clearance tests	
2	Measurement of glomerular filtration rate	
3	Measurement of renal blood flow	
4	Assessment of tubular functions	

### Requirements

- I. Attendance of at least 80% of practical sections.
- II. Doing at least 5 procedures in each.
- III. Students are able to do techniques and recognized procedures.
- IV. Practical assessment at the end of course.



## 2- Practical experiments presentation log book

Record the cases related to the module that you have presented in a seminar or other activity.

H.N	Diagnosis of case	Level of participation*	Location	Signature of supervisor

\* Level of participation

A- Plan and carry out

B- Carry out

C- Carry out under supervision



[illegible]

A- Independent performance  
B- Performance under supervision  
C- Observed

## Requirements

I. Attendance of at least 80% of practical sections.

II. Doing at least 5 procedures done independent

### 4- Rotation / attendance proof

توقيع مدير المعمل	توقيع رئيس القسم	التاريخ	أسم المعمل التى تدرب بها

# Course 2; Unit: 9

## ENDOCRINE SYSTEM

### &

## REPRODUCTION



## Course 2; Unit 9: ENDOCRINE SYSTEM & REPRODUCTION

### 1. Case/Practical experiments log book

No	Experiment	Number of each experiments
1	Measurement of different hormones	
2	Assessment of functions of different hormones	
3	Methods of determination of testicular function tests	
4	Methods of determination of ovulation time	
5	Methods of determination of pregnancy	

### Requirements

- I. Attendance of at least 80% of practical sections.
- II. Doing at least 5 procedures in each.
- III. Students are able to do techniques and recognized procedures.
- IV. Practical assessment at the end of course.



## 2- Practical experiments presentation log book

Record the cases related to the module that you have presented in a seminar or other activity.

H.N	Diagnosis of case	Level of participation*	Location	Signature of supervisor

\* Level of participation

A- Plan and carry out

B- Carry out

C- Carry out under supervision



### 3- Procedures log book

H N	Procedure	Level of competency*	Location	Signature

\* Level of competency

A- Independent performance

B- Performance under supervision

C- Observed



I. Attendance of at least 80% of practical sections.

## II. Doing at least 5 procedures done independent

[illegible]

---

# Elective Course

## Requirements

● **Credit points:** 2 credit point.

- Minimal rate of attendance 80% of lectures and 80% of training





## Elective Course Lectures

---

105

[illegible]



## 1- Academic activates

[illegible]



**\*\* Your role:-**  
A- Attendance  
B- Organization  
C- Presentation



## Activity

Date \_\_\_\_\_

**Signature of supervisor**

[illegible]



---

110

## Postgraduate student's program Rotation in training assessment

\* **Name:**

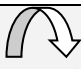


\* **Period of training From:**

**To:**




\* **Site:**

\* **Rotation**

General skills	could not judge (0)	strongly disagree (1)	(2 ) (3)	(4 ) (5)	(6)	strongly agree (7)
Perform practice-based improvement activities using a systematic methodology (share in audits and risk management activities And use logbooks).						
Appraises evidence from scientific studies.						
Conduct epidemiological Studies and surveys.						
Perform data management including data entry and analysis and Using information technology to manage information, access on-line medical information; and support their own education.						

General skills	could not judge (0)	strongly disagree (1)	(2 ) (3)		(4 ) (5)		(6)	strongly agree (7)
								
Facilitate learning of students, lab technical staff and other health care professionals including their evaluation and assessment.								
Maintain therapeutic and ethically sound relationship with patients, their families, lab technical staff and other health professionals.								
Elicit information using effective nonverbal, explanatory, questioning, and writing skills.								
Provide information using effective nonverbal, explanatory, questioning, and writing skills.								
Work effectively with others as a member of a team or other professional group.								
Demonstrate respect, compassion, and integrity; a responsiveness to the needs of patients and society.								
Demonstrate a commitment to ethical principles including provision or withholding of clinical care, confidentiality of patient information, informed consent, business practices.								



General skills	could not judge (0)	strongly disagree (1)	(2 ) (3)		(4 ) (5)		(6)	strongly agree (7)
								
Demonstrate sensitivity and responsiveness to patients' culture, age, gender, and disabilities.								
Work effectively in relevant academic and health care delivery settings and systems including good administrative and time management.								
Adopt cost-effective practice and resource allocation that does not compromise quality of services.								
Assist patients in dealing with system complexities.								

[illegible]



---

115

### الرسائل العلمية

عنوان الرسالة

عربي : \_\_\_\_\_

انجليزي : \_\_\_\_\_

المشرفون : \_\_\_\_\_

1- \_\_\_\_\_

2- \_\_\_\_\_

3- \_\_\_\_\_

4- \_\_\_\_\_

تاريخ القيد لدرجة : ..... / / 20

تاريخ التسجيل الموضوع : .....

المتابعة الدورية : .....

التاريخ	ما تم انجازه من برتكول البحث	المتبقي	توقيع المشرفين



## Declaration

Course Structure Mirror	Responsible (Module) Coordinator Name:	Signature	Date
Basic course			
Speciality course			
Module I			
Module II			
Module III			
Module IV			
Module V			
Module VI			
Module VII			
Module VIII			
Module IX			
Module X			
- Master Degree Thesis Acceptance Date:			
- Fulfillment of required contact hours prior to final examination			
Physiology master degree principle Coordinator:			
Date approved by physiology department council:			

يعتمد ،  
رئيس القسم

/د.ا